

# 2023 ANNUAL REPORT



(044) 795-0102



[plaridelwaterdistrict.ph](http://plaridelwaterdistrict.ph)



[plaridel\\_water\\_district1987@yahoo.com](mailto:plaridel_water_district1987@yahoo.com)



A.C. Reyes St., Poblacion, Plaridel, Bulacan

# TABLE OF CONTENTS

<b>INTRODUCTION.....</b>	<b>3</b>
Brief History .....	3
Legal Mandates and Functions.....	5
Mission and Vision.....	6
Performance Pledge.....	7
<b>PART I - GENERAL .....</b>	<b>8</b>
Administrative.....	8
Financial/Commercial .....	11
Technical .....	13
Operational.....	14
<b>PART II - PROFILE .....</b>	<b>17</b>
The Water District and Its Physical System’s Facilities.....	17
Current Operation/Financial Highlights.....	19
Other Information.....	19
<b>ANNEXES .....</b>	<b>21</b>
Annex A - Organizational Chart .....	22
Annex B - List of Plantilla of Personnel for the Fiscal Year 2023 .....	25
Annex C - Financial Statements .....	28
Annex D - Approved Water Rates Schedule.....	40
Annex E- Summary of Water Production and Consumption .....	42
Annex F - Water Sources.....	43
Annex G - Service Connection Growth .....	44
Annex H - List of Major Equipment .....	45
Annex I - Summary of Bacteriological Analysis.....	66

## INTRODUCTION

### BRIEF HISTORY

Plaridel Water District (PLAWD) was formed on September 26, 1986 by virtue of Sangguniang Bayan Resolution No. 24 creating the district. PLAWD's formation was confirmed on January 15, 1987 thru the issuance of Conditional Certificate of Conformance (CCC) No. 277 by the Local Water Utilities Administration (LWUA). PLAWD officially assumed the operation and management of the Plaridel Waterworks on March 2, 1987 with some 425 connections and service capability of only nine (9) hours in the población and some neighboring barangays.

Since the turnover, the service of PLAWD has continuously improved under the able guidance of the board of directors and management's prudent and efficient utilization of resources which resulted to a better delivery of potable water to the consumers. Moreover, technical, financial and institutional development assistance became possible through the Local Water Utilities Administration (LWUA) which also monitors the performance of PLAWD.

On March 21, 2012, PLAWD was officially categorized as a Category B Water District by LWUA in compliance with the guidelines provided for in the Department of Budget and Management (DBM) approved Revised Local Water District (LWD) Manual on Categorization, Re-Categorization and Other Related Matters (LWD MaCRO). The Organizational Structure and Staffing Pattern of PLAWD was approved by DBM on December 03, 2012.

As of December 2023, PLAWD has 23,888 active water service connections serving about 114,000 individuals in all the nineteen (19) barangays of Plaridel. Collection efficiency is at 90.0%, which is slightly lower compared to the previous year (92.5%). PLAWD has an 22% Non-Revenue Water (NRW) which is slightly higher than the 20% benchmark set by LWUA. This is primarily due to the increase in the pressure of the water distribution system caused by the energization of the additional Interconnection Point (IP) 2 which supplies a minimum contracted volume of 5.0MLD. The increase in pressure caused some visible leaks from various pipelines which are repaired accordingly. Furthermore, PLAWD plans to reduce its NRW through active leak detection particularly during the evening when the demand is lower and the pressure is higher. PLAWD also consistently complies with the parameters set by the Philippines National Standards for Drinking Water (PNSDW) on water quality such as Bacteriological, Physical, Chemical, and Residual Chlorine.

As a water service provider, PLAWD also has its share of consumer complaints such as the low water pressure in some areas and the occurrence of turbid water which is mainly caused by the presence of manganese and iron in some of its eight (8) pumping stations. Thus, PLAWD continuously improve its operation and services through the implementation of different water supply expansion and improvement projects.

Such project is the ongoing Water District Development Sector Project (WDDSP) under the guidance of LWUA and loan from Asian Development Bank (ADB). The LWUA-ADB-WDDSP loan of PLAWD consists of three (3) major water project packages, namely:

1. Design and Construction of Plaridel Water Supply System;
2. Design and Construction of Plaridel Water District Office Building; and,
3. Design and Construction of Ground Reservoir.

Another major project is the Septage and Sanitation Project which includes a Septage Treatment Facility and vacuum trucks for desludging of septic tanks of PLAWD consumers. This is funded from a financial grant from LWUA in compliance to the Supreme Court Mandamus on Manila Bay (G.R. 171947-48). For the meantime, PLAWD has entered into a Memorandum of Agreement (MOA) with Baliwag Water District for desludging and treatment with a daily volume of 5 cubic meters. As of 31 December 2023, a total of 435 households were served by the desludging and treatment program.

Programs such as pipelaying in several areas, hiring of employees, Gender and Development (GAD) activities, and many more are conducted to improve PLAWD's service.

Plaridel Water District will continuously seek to enhance its services to meet the increasing demand of potable water supply as the improvement of PLAWD is always geared for the benefit of its concessionaires.

## LEGAL MANDATES AND FUNCTIONS

The Plaridel Water District (PLAWD) derived its authority and existence from the Provincial Water Utilities Act of 1973, or otherwise known as Presidential Decree No. 198. From its formation, a water district is considered as a quasi-public corporation performing public service and supplying public wants. As such, a water district shall exercise the powers, rights and privileges given to private corporations under existing laws, in addition to the powers granted in, and subject to such restrictions imposed under PD 198.

On September 13, 1991, in the case of Davao City Water District, et al. vs. Civil Service Commission and Commission on Audit (G.R. Nos. 95237-38), the Supreme Court declared that water districts are government-owned or controlled corporations with original charter which fall under the jurisdiction of Civil Service Commission (CSC) and Commission on Audit (COA).

PLAWD is mandated to do the following functions, to wit:

1. Acquire, install, improve, maintain and operate water supply system for domestic, commercial and industrial uses for residents and people of the Municipality of Plaridel, Bulacan and within the legal jurisdiction of the Municipality;
2. Sewerage, septage, and sanitation services as provided for in P.D. 198; and,
3. Perform such other functions and operations incidental to water resource development, utilization and disposal within the Municipality and its environment as are necessary or incidental to said purpose.

## MISSION AND VISION

### MISSION

---

“To provide potable and adequate water as well as sanitation services accessible to every concessionaire at the least possible cost.”

---

### VISION

---

“An organization of hardworking, innovative and dynamic workforce with a strong commitment of providing quality service towards a sustainable water supply, sanitation and environmental protection.”

---

# **PERFORMANCE PLEDGE**

## **OF OFFICIALS, MANAGEMENT AND EMPLOYEES**

**S**erve concessionaires without delay and with utmost courtesy

**E**nsure the best delivery of frontline services

**R**espond to the complaint promptly regarding the water services within the day through the Public Assistance and Complaint Desk in-Charge

**V**alue every comments, suggestions and needs by documenting the same and monitoring the actions taken by the concerned officials and employees, as embodied in the Agency's Transparency Seal based on the provisions of the General Appropriations Act

**I**nnovate personnel to provide better frontline services in line with the ISO 9001:2015 Certification by TUV Rheinland and sustained thru information dissemination, research and development and trainings and workshops

**C**ontinue to improve the services to the full satisfaction of our valued concessionaires

**E**mpower the frontline personnel and concessionaires

**S**ervices to include Sanitation and Hygiene in pursuance of the WASH program of the Sustainable Development Goals (SDGs)

## PLARIDEL WATER DISTRICT

### ANNUAL REPORT

For the Period January 01, 2023 to December 31, 2023

#### PART I - GENERAL

##### A. ADMINISTRATIVE

1. Attach Water District's approved Organizational Charts in effect as of report year's end

[Annex A](#) - Position/Organizational Chart

2. Attach list of employed personnel with pertinent information.

(List of Plantilla of Personnel for the Fiscal Year 2023) [Annex B](#)

The following summarizes the District's staffing:

a. Total Number of Employees	81
b. Number of Permanent Employees	81
c. Number of Casual/Temporary Employees	22
d. Number of Employees Meeting Minimum Qualifications Per Job Descriptions Adopted by the Water District	81
e. Number of not Classified Casuals/Temporary who Do Not Meet the Qualifications Established by the Water District	0
3. Has the district adopted a policy prohibiting the hiring of personnel-related up to the fourth degree by affinity or consanguinity? (Yes or No)	Yes

If not, how many of the employees are related to the appointing or recommending officer/authority, or of the chief of the bureau, or the officer or the person exercising



immediate supervision over the appointee within the fourth degree by affinity or consanguinity? (2017 Omnibus Rules on Appointment & Other HR Actions)

4. Has the district adopted rules and regulations regarding the following:

a. Personnel Matters

Yes

b. Utility Customers Relations

Yes

c. General Utility Operations

Yes

5. Attach list of policy setting resolutions adopted, repealed, or amended by the District Board including those adopting LWUA guidelines. ([Annex C](#))

6. Has the district written and properly updated reliable records of the following? (Yes or No)

a. Customer's Complaints

Yes

b. Billing and Collections

Yes

c. Delinquencies in Payment of Water Bills

Yes

d. Meter Histories

Yes

e. Service Connections

Yes

f. Equipment Downtime

Yes

g. Equipment Histories

Yes

h. Bacteriological Tests	Yes
i. System Pressures	Yes
j. Leak Reports	Yes
k. Unaccounted for Water	Yes
l. Pump Efficiencies	Yes
m. Water Production	Yes
n. Valve and Pipeline Location	Yes
o. General Accounting	Yes
p. Stock Inventory	Yes
q. Stores Usage	Yes
r. Employees Record	Yes
s. Minutes and Board Meetings	Yes
7. For this year, Auditing has been done by Commission on Audit	No (for schedule)

## B. FINANCIAL/COMMERCIAL

1. Attach the district's financial statements for the report year, including a comparison of the immediate past year ([Annex D](#))
2. For the year under report, the district's gross budgetary outlay was broken down into (Source: Approved Budget):

a. Operating Outlay (₱)	122,061,372.16
b. Capital Outlay (₱)	6,233,760.68
c. Special budget, if any (Additional Budget) - (Supplemental) (₱)	-
d. Financial Expenses (₱)	4,800,000.00
e. Reserves (₱)	-

3. For the same one-year period, district's Gross Revenue was broken down into (Source: Financial Report):

a. Revenue from Water Sales (₱)	110,472,504.30
b. Other Water Revenues (₱)	8,236,768.20
c. Other Non-Operating Income (₱)	6,803,249.45
d. Proceeds from LWUA loan to finance new service (₱)	71,533,671.67

4. For this same one-year period, the District's expenditure was broken down into:

a. Operational (operation and maintenance expenses, including depreciation) (₱)	72,463,186.78
---	---------------

b. Capital Outlay (₱)	3,358,963.50
c. Annual Debt Servicing (Summary of Loan Payments to DBP & LWUA) (₱)	-
5. For this same one-year period, the total salaries, wages, & other emoluments paid for the District's employees were broken down into:	
a. For permanent employees (₱)	25,868,176.32
b. For casual/temporary (₱)	2,697,552.42
c. Allowance, Benefit, & Emoluments (₱)	16,757,752.55
6. Expenses for power/fuel for pumping during the year (₱):	46,710,101.21
7. Total amount billed during the year is broken down into:	
a. Total Billings (Current) (₱)	110,499,684.10
b. Old Accounts (A/R Beginning) (₱)	7,886,828.77
8. Total amount collected (Water sales only during the year is broken down into:	
a. Current Billings (₱)	64,496,723.40
b. Arrears (₱)	38,612,124.59
9. Total amount collected (delinquent) at the year's end (excluding bad debts) (₱)	6,282,291.21
10. Total net income/loss at year's end (₱)	7,725,856.88

## 11. Complaints filed, processed, and settled during the year

a. Total Number Filed, Processed, and Settled during the year

7,148

b. Number Dismissed for Lack of Merit/Withdrawn

28

c. Number Investigated

7,148

d. Number Settled to the Satisfaction of Complaints

6,516

e. Number Elevated to the District Board of Directors

None

f. Number Settled by the Board

None

g. Number Elevated to Higher Authorities

2

## 12. At year's end, the following water rate charges were in force:

([Annex E - Approved Water Rates Schedule](#))

Had these rates been submitted to LWUA for review?

Yes

**C. TECHNICAL**

1. Has the district adopted by Board Resolutions, a set of design and construction standard? (Yes or No)

Yes

If so, who prepared it?

PLAWD Management

Is it being adhered to strictly?

Yes

2. Does the District undertake bacteriological test of its water? (Yes or No)

Yes

How often are these tests made per year?

Monthly

Is LWUA being furnished copies of these reports? (Yes or No)

Yes

For the report year, how many such reports were submitted to LWUA?

12

3. State the method of water treatment employed by the District, if any

Chlorination

4. Does the District undertake regular pump efficiency test? (Yes or No)

Yes

How many of these pumps does the District have in its system?

Eight (8)

How many of these pumps are operational?

Seven (7)

\*One (1) = Temporarily shut down

#### D. OPERATIONAL

1. Total water production during the year in cubic meters  
(Annex F - Summary of Water Production and Consumption)

8,089,684.00

Total water billed in cubic meters

6,339,449.00

Average per capita consumption in lpd

186.43

2. Attach list of Water Sources (Annex G - WD Water Sources)

3. Is the District provided with measuring devices to measure their water production? (Yes or No)

Yes

If yes, what type?

Flow Meter

If not, how do you measure productions?

N/A

4. As of year's end, the District has the following existing service connections and related information ([Annex H - Service Connection Growth](#))

a. Total number of existing connections (Active and Inactive Connections)

25,935

b. Number of Active Connections

23,888

c. Number of metered Connections

1. With functioning meters

23,945

2. With non-functioning meters

None

d. Number of flat rate connections

None

e. Number of connections regularly billed

23,945

f. Number of delinquent concessionaires

1,943

g. Average number of customers per connections (HH)

4

5. Estimated population of district service areas (19 out of 19 Barangays)

a. Estimated population served by utility whether fully or partially (19 out 19 Barangays)

19

6. Because of inadequate facilities, the District has to provide partial service in accordance with the following average length of time each 24-hours day:

a. Less than 6 hours of service

None

b. 7-12 hours of service

None

c. 13-18 hours of service

None

d. 19-24 hours of service

None

(Note: You may vary the number of hours as may be necessary to suit actual conditions)

7. Attach list of major equipment and machinery (with an initial cost of at least ₱15,000.00 including pertinent information).

(Annex I - List of Major Equipment)

8. Does the District keep written record of request for service?

(Yes or No)

Yes

a. Does the record show the date when such requests were made and the nature of the service requested? (Yes or No)

Yes

b. On the average, how long (in days) does it take the District to respond and attend such requests?

3 Days

c. How many such reports were received during the year?

354

d. How many of these reports were attended to during the year?

354



## PART II - PROFILE

**A. THE WATER DISTRICT & ITS PHYSICAL SYSTEM'S FACILITIES**

## 1. Organization

a. Date Formed

September 26, 1986  
(as per Sangguniang  
Bayan Resolution No.24)

b. Date CCC was issued

January 15, 1987

c. CCC No.

277

d. Personnel

103

Comments: (adequacy, qualification, performance, &amp; others)

## 2. Existing System's Facilities

a. Service

1. Service Area

Plaridel, Bulacan

2. Population of Service Area (Latest)

114,432

3. No. of Persons/Households

4

4. Service Time (hours/day)

24

b. Structure and Equipment

1. Administration Building

Office Area (sq. m.)

280

Office Equipment (refer to [Annex I](#) - List of  
Major Equipment)

2. If rented, how much per month?	Engineering Office rented, Php10,000/month
3. Type of Water Source	Deep well + Bulacan Bulk
4. Reservoir (description, built, and capacity)	1 Elevated steel tank, discharge capacity of 34.18 lps, built in 2014
5. Water Sources ( <a href="#">Annex J</a> - WD Water Sources)	
6. Service Connections	25,935
7. Total Production (cu.m.)	8,089,684.00
a. Deep Well (7) Production (cu.m.)	6,341,698.00
b. Bulacan Bulk Water Production (cu.m.)	1,747,986.00
Average Monthly Production (cu.m.)	674,140.33
Bulacan Bulk Water	
Minimum Contracted Volume (cu.m./day)	7,000.00
Daily Average Volume Consumption (cu.m./day)	4,789.00
Production Efficiency % (Average/month) (Total Water Utilized/Total Production)	78.36%
%NRW (YTD)	21.64%

## B. CURRENT OPERATION/FINANCIAL HIGHLIGHTS

1. Existing Water Rates (refer to [Annex E](#) - Water Rates Schedule)

2. Operating Income/Expenses

Average Water Sales (average/mo) (₱)

9,543,039.16

Average Collection (average/mo) (₱)

8,592,403.99

Average Expenses - O & M for the year (average/mo) (₱)

8,398,542.38

3. Financial Highlights (Rate & Status)

Current Ratio = Current Assets/Current Liabilities

3.00

Long-term debt/Equity Ratio

N/A

Monthly Billing in cu.m. (average/mo)

22.3

Collection Efficiency - % of On-Time Payment (YTD)

90%

## C. OTHER INFORMATION

1. The District has been paying the Luzon Clean Water Development Corp. an average of 2,493,086.24 for the average 230,431.67 cubic meter of Bulk Water per month.

2. The District has implemented the Meter Clustering System to help alleviate water pilferage.

Yes, in some areas

3. The District regularly monitors the Residual Chlorine in various strategic points of its water supply system ([Annex J](#) - Summary of Bacteriological Analysis 2023)

Yes

4. The District has maintained its established safety programs and standard operating procedure

Yes

5. The District has continued implementing the 5% discount for water bill of Senior Citizens

Yes

6. The District has approved the Gender and Development Budget for CY 2023 in compliance with RA 9710

Yes

7. The District has adopted and implemented the approved Strategic Performance Management System (SPMS)

Yes

8. The District has religiously paid the principal and interest of its various loans to LWUA

N/A

PREPARED BY:

  
ENGR. DAN ANGELO L. MADARIAGA  
Senior Engineer A

REVIEWED AND CHECKED BY:


  
CECILIA L. PASAGUI  
Division Manager B - Finance

  
MARIFAYE H. ERSANDO  
Division Manager B - Commercial

  
ENGR. REYNANTE D.  
FRANCISCO  
Division Manager B -  
Engineering and Technical

  
JUSTIN MICHAEL B.  
BERANGO  
Division Manager B -  
Administrative

APPROVED BY:

  
ENGR. MARIO G. MACATANGAY  
Interim General Manager

# ANNEXES

## ANNEX A - ORGANIZATIONAL CHART AS OF 31 DECEMBER 2023

**BOARD OF DIRECTORS**

**NATHANAEL ANDRES S. BERNABE JR.**  
Chairman  
Board of Directors

**ATTY. REYNALDO F. PARIS**  
Vice Chairman  
Board of Directors

**NANCY C. DELA CRUZ**  
Secretary  
Board of Directors

**AMIRA DE LEON ARROYO**  
Member  
Board of Directors

**ENGR. FERDINAND R. MAGSAKAY**  
Member  
Board of Directors

Item No. 1  
Secretary C  
SG 06  
(vacant)

**OFFICE OF THE GENERAL MANAGER**

**ENGR. REYNANTE D. FRANCISCO**  
Officer-In-Charge

**ANNE TONETTE R. CRUZ**  
General Manager

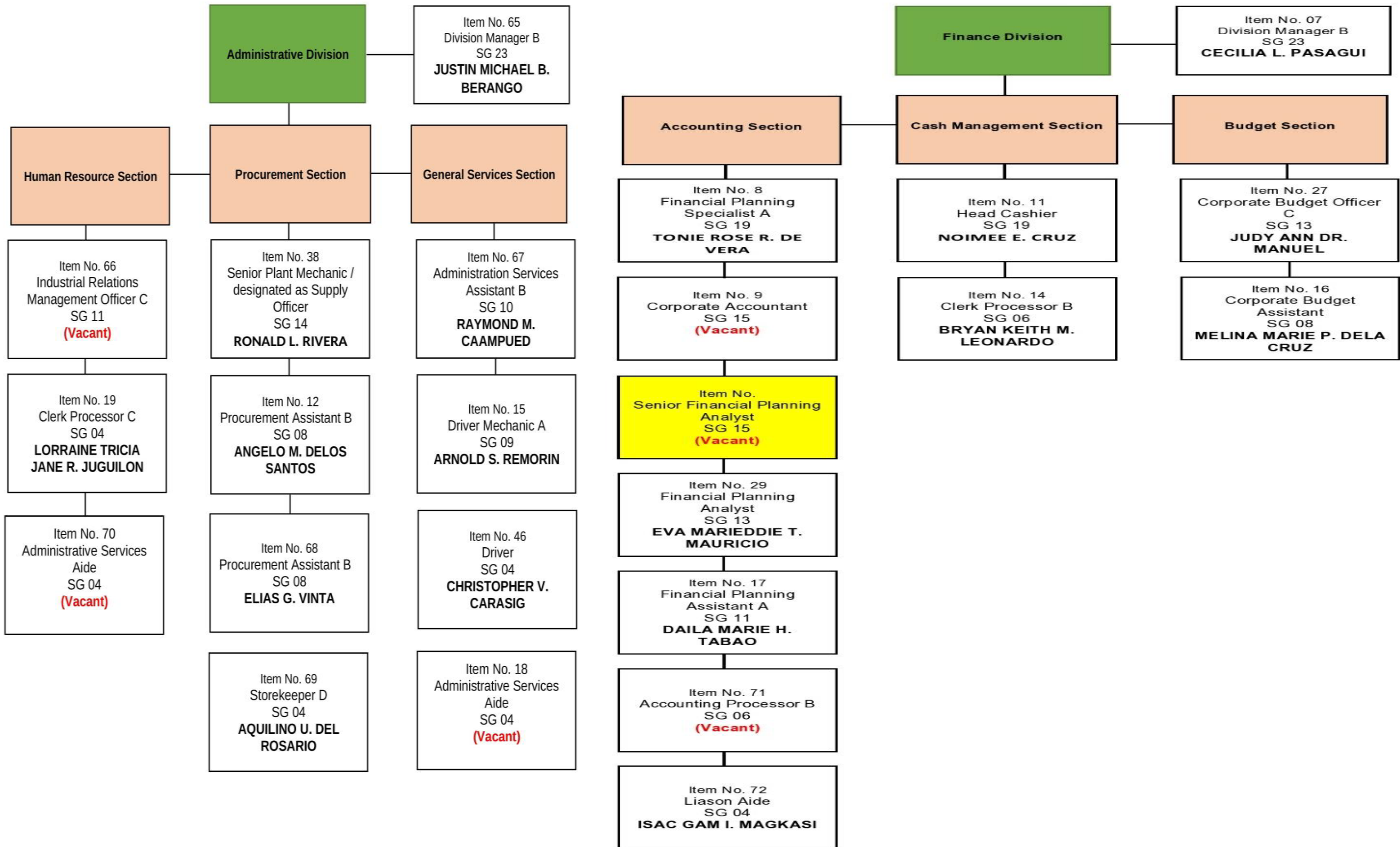
**ELMER C. MARCELO**  
Executive Assistant C  
SG 14

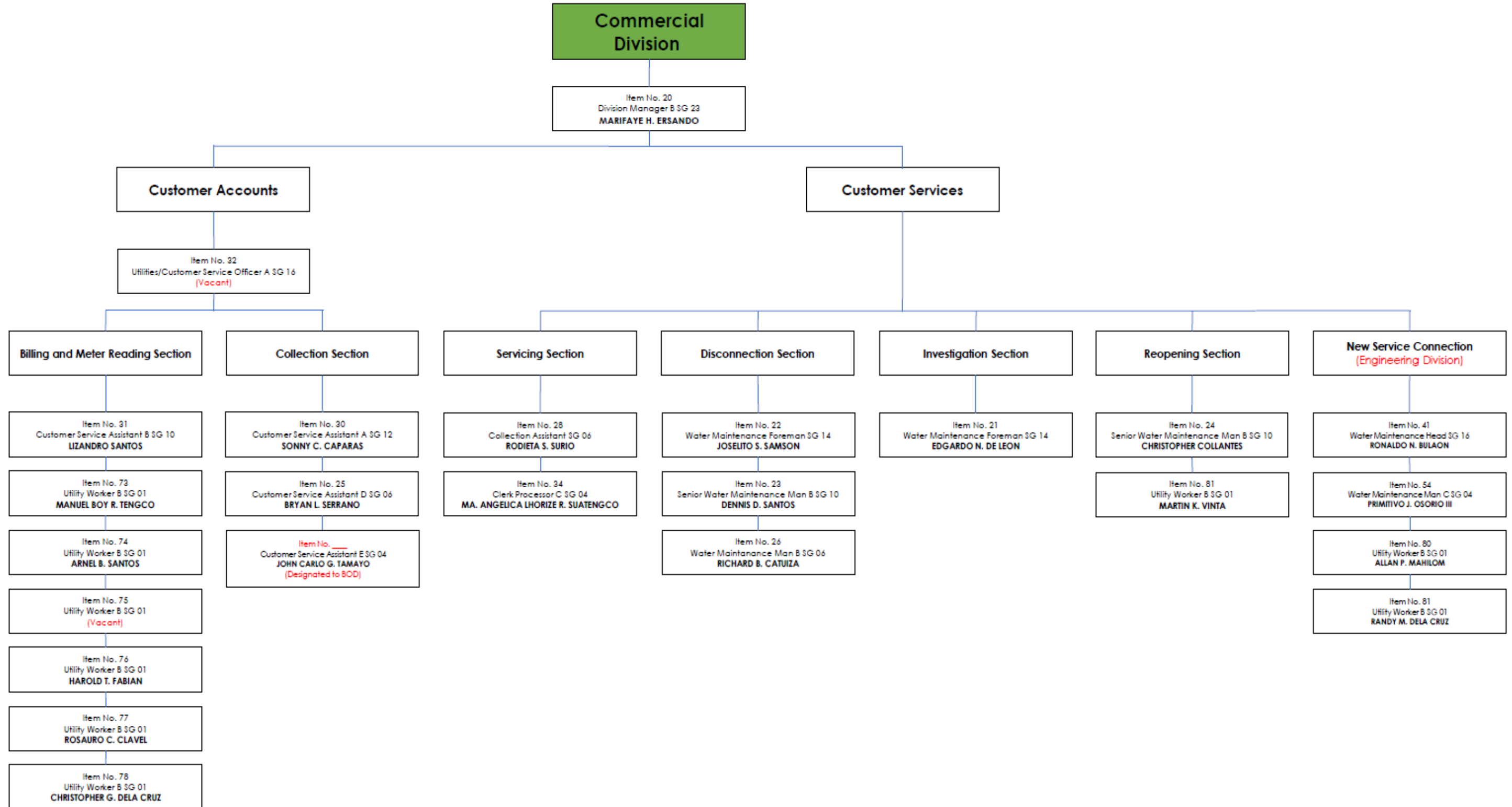
**Corporate Planning Analyst B**  
SG 12  
(vacant)

**Secretary A**  
SG 09  
(vacant)

**DEANNA G. MARIANO**  
Clerk Processor B  
SG 06

**JIM BENZON R. TALAVERA**  
Clerk Processor C  
SG 04







## ANNEX B - LIST OF PLANTILLA OF PERSONNEL FOR THE FISCAL YEAR 2023

LIST OF PERMANENT EMPLOYEES AS OF DECEMBER 31, 2023			
	NAME OF EMPLOYEE	POSITION	SG
1	Albert Garcia Ramos	Water Maintenance Head	16
2	Alberto Amora Mendoza	Senior Engineer A	16
3	Alcay Santiago Suratos	Utility Woker B	1
4	Alexander De Jesus Paulate	Senior Water Resources Facilities Operator A	10
5	Allan Pastorfide Mahilom	Utility Worker B	1
6	Alvin Sarnate Chinchuntic	Senior Engineer A	8
7	Alvin Mendiola Santiago	Water Resources Facilities Operator A	16
8	Angelo Muldong Delos Santos	Procurement Assistant B	8
9	Anne Tonette Ramos Cruz	General Manager B	27
10	Aquilino Untalan Del Rosario	Storekeeper D	4
11	Arnel Taroy Garlitos	Senior Water Maintenance Man A	1
12	Arnel Baldera Santos	Utility Worker B	12
13	Arnold Mendiola Dela Cruz	Utility Woker B	1
14	Arnold Sandig Remorin	Driver-Mechanic A	9
15	Bryan Lumontad Serrano	Customer Service Assistant D	6
16	Bryan Keith Melad Leonardo	Clerk Processor B	6
17	Carlo Jose Mariano David	Water Resources Facilities Operator C	4
18	Cecilia Lopez Pasagui	Division Manager B	23
19	Charlie Azurin Felicitas	Senior Engineer A	16
20	Christopher Vistan Carasig	Driver	1
21	Christopher Ymata Collantes	Senior Water Maintenance Man B	4
22	Christopher Gabriel Dela Cruz	Utility Worker B	10
23	Daila Marie Hernandez Tabao	Financial Planning Assistant A	4
24	Dan Angelo Lagamia Madariaga	Senior Engineer A	11
25	Deanna Gatmaitan Mariano	Clerk Processor B	16
26	Dennis Dimaapi Santos	Senior Water Maintenance Man B	6
27	Edgardo Nunag De Leon	Water Maintenance Foreman	10
28	Elias Gatchalian Vinta	Procurement Assistant B	14
29	Elmer Crisostomo Marcelo	Executive Assistant C	8
30	Emiterio Azurin Felicitas, Jr.	Water Resources Facilities Operator C	14
31	Enrico Somo Omedes	Water Resources Facilities Operator C	4
32	Eva Marieddie Torillo Mauricio	Financial Planning Analyst	4
33	Felix Vinta Yumol, Jr.	Water Maintenance Foreman	13
35	Francisco Alayon Aspera, Jr.	Water Maintenance Man B	6
36	Harold Talusan Fabian	Utility Worker B	1

37	Ibarra Polintan Villafuerte	Water Maintenance Foreman	14
38	Isac Gam Ilagan Magkasi	Liaison Aide	4
39	James Crisol Magbag	Water Resources Facilities Operator C	4
40	Jayson Gusilatar Carlos	Utility Woker B	1
41	Jefferson Vistan Garcia	Engineering Aide B	4
42	Jim Benzon Rivera Talavera	Clerk Processor C	4
43	John Carlo Gino Tamayo	Customer Service Assistant E	4
44	John Paul Lumanlan Concepcion	Utility Worker B	4
45	John Paul Dimaapi Mariano	Water Resources Facilities Operator C	1
46	Jojit Sibal Pagulayan	Engineering Aide B	4
47	Joselito Salvador Samson	Water Maintenance Foreman	14
48	Judy Ann De Robles Manuel	Corporate Accountant	15
49	Jumar Reyes San Pedro	Water Resources Facilities Operator C	4
50	June Rondina Lopez	Water Maintenance Man B	6
51	Justin Michael Bonaobra Berango	Division Manager B	23
52	Kim Marcelo Raymundo	Utility Woker B	1
53	Lizandro - Santos	Customer Service Assistant B	10
54	Lorraine Tricia Jane Juguilon Clemente	Clerk Processor C	4
55	Ma. Angelica Lhorize Ramos Suatengco	Clerk Processor C	4
56	Manuel Boy Real Tengco	Utility Worker B	1
57	Marc John Regie Dela Cruz Galicia	Accounting Processor B	6
58	Marifaye Herrera Ersando	Division Manager B	23
59	Martin Kalaw Vinta	Utility Worker B	1
60	Melina Marie Paguia Dela Cruz	Corporate Budget Assistant	8
61	Noimee Evangelista Cruz	Head Cashier	19
62	Paolo Froyalde Buenaventura	Utility Woker B	1
63	Paul Del Rosario Vinluan	Plumber C	3
64	Philip Del Rosario Vinluan	Water Resources Facilities Operator C	4
65	Primitivo III Joson Osorio	Water Maintenance Man C	4
66	Rafael Isaga Isagunde	Senior Water Maintenance Man A	12
67	Rafael Kalaw Vasquez	Water Resources Facilities Operator C	4
68	Randy Mendiola Dela Cruz	Utility Worker B	1
69	Raymond Mariano Caampued	Administration Services Assistant B	10
70	Renato Santos Surban	Water Maintenance Man B	6
71	Reynante Dela Cruz Francisco	Division Manager B	23
72	Richard Bonifacio Catuiza	Water Maintenance Man B	6
73	Rodieta Salamat Surio	Collection Assistant	6
74	Romnick Rebaula Gusilatar	Utility Woker B	1

75	Ron Andrew Ablaza Rivero	Engineering Assistant B	8
76	Ronald Lumague Rivera	Senior Plant Mechanic	14
77	Ronaldo Naval Bulaon	Water Maintenance Head	16
78	Ronaldo Camua Picar	Senior Engineer A	16
79	Rosauro Cruz Clavel	Utility Worker B	1
80	Rufino Jr. Dela Cruz Adriano	Water Resources Facilities Operator C	4
81	Sonny Dela Cruz Caparas	Customer Service Assistant A	12
82	Tonie Rose Ramos De Vera	Financial Planning Specialist A	19

<b>LIST OF JOB ORDER PERSONNEL AS OF DECEMBER 31, 2023</b>		
	<b>NAME OF EMPLOYEE</b>	<b>POSITION</b>
1	Jason P. Aspera	Engineering Field Support
2	Edgardo DC. Crisostomo	Septage Service Support
3	Maybel M. Cruz	Billing and Collection Support
4	Christian G. Dela Cruz	Office Procuring Support
5	Jericho M. Flores	Building Off-site Support
6	Mark Kevin M. Geronimo	Engineering Field Support
7	Ralf Jordan SP. Isagunde	Engineering Field Support
8	Kristelle Joy T. Isidro	Office Service Support
9	Jethro C. Magbag	Office Service Support
10	Jonard B. Manalo	Engineering Field Support
11	Jaypee G. Manuel	Office Service Support
12	Jerick G. Marcelo	Engineering Field Support
13	Angie R. Mariano	Office Service Support
14	Darwin S. Mariano	Septage Service Support
15	Warren Mendoza	Building Utility Support
16	Janico B. Meravil	Septage Service Support
17	Anthony D. Naval	Commercial Field Support
18	Mark Hansel T. Paulino	Commercial Field Support
19	John Nicholo P. Policarpio	Office Service Support
20	Ronald M. Tamayo	Building Utility Support
21	Jhay Mark B. Villaseñor	Engineering Field Support
22	Manuel G. Yumol	Engineering Field Support

## ANNEX C - FINANCIAL STATEMENTS



**PLARIDEL WATER DISTRICT**  
**STATEMENT OF FINANCIAL POSITION**  
**As at December 31, 2023**  
 (With Comparative Figures for CY 2022)

	Note	2023	2022
<b>ASSETS</b>	2,3		
<b>Current Assets</b>			
Cash and Cash Equivalents	4	₱ 113,113,893	₱ 48,432,889
Receivables, Net	5,18	10,749,122	67,505,488
Inventories	6	12,341,731	8,614,412
Other Current Assets	7	1,693,079	1,180,333
<b>Total Current Assets</b>		<b>137,897,826</b>	<b>125,733,122</b>
<b>Non-Current Assets</b>			
Property, Plant and Equipment, Net	8	185,384,238	102,689,052
Investments	9	1,031,042	1,025,645
Other Non Current Assets		1,254,778	1,254,778
<b>Total Non-Current Assets</b>		<b>187,670,058</b>	<b>104,969,475</b>
<b>TOTAL ASSETS</b>		<b>₱ 325,567,884</b>	<b>₱ 230,702,598</b>
<b>LIABILITIES AND EQUITY</b>	2,3		
<b>LIABILITIES</b>			
<b>Current Liabilities</b>			
Financial Liabilities	10,18	₱ 13,233,162	₱ 12,560,282
Inter-Agency Payables	11	7,679,807	2,989,964
Intra-Agency Payables	12	30,659	30,659
Trust Liabilities	13	9,387,949	7,950,604
Provisions	14	6,512,456	5,974,426
Other Payables		9,075,685	690,634
<b>Total Current Liabilities</b>		<b>45,919,719</b>	<b>30,196,569</b>
<b>Non-Current Liabilities</b>			
Financial Liabilities		71,533,672	-
<b>Total Non-Current Liabilities</b>		<b>71,533,672</b>	<b>-</b>
<b>TOTAL LIABILITIES</b>		<b>117,453,391</b>	<b>30,196,569</b>
<b>EQUITY</b>			
Government Equity		4,808,060	4,808,060
Retained Earnings		203,306,434	195,697,969
<b>TOTAL EQUITY</b>		<b>208,114,493</b>	<b>200,506,029</b>
<b>TOTAL LIABILITIES AND EQUITY</b>		<b>₱ 325,567,884</b>	<b>₱ 230,702,598</b>

Prepared by:

*Rome*  
**TONIE ROSE R. DE VERA**  
 Financial Planning Specialist

Checked and verified by:

*Cecilia L. Pasagui*  
**CECILIA L. PASAGUI**  
 Division Manager B - Finance

Noted by:

*Mario G. Macatangay*  
**ENGR. MARIO G. MACATANGAY**  
 Interim General Manager

02/12/2024



**PLARIDEL WATER DISTRICT**  
**STATEMENT OF COMPREHENSIVE INCOME**  
**For the Year Ended December 31, 2023**  
 (With Comparative Figures for CY 2022)

	Note	2023	2022
<b>INCOME</b>			
Service and Business Income		P 118,709,273	P 103,338,611
Other Non-Operating Income		6,803,249	6,236,604
<b>Total Income</b>	15	<b>125,512,522</b>	<b>109,575,215</b>
<b>EXPENSES</b>			
Personnel Services	16	45,323,478	44,563,321
Maintenance and Other Operating Expenses	17	64,793,636	51,162,746
Financial Expenses		7,750	7,450
Non-Cash Expenses		7,661,801	7,048,689
<b>Total Expenses</b>		<b>117,786,665</b>	<b>102,782,207</b>
<b>NET INCOME</b>		<b>P 7,725,857</b>	<b>P 6,793,008</b>


Prepared by:

  
**TONIE ROSE R. DE VERA**  
 Financial Planning Specialist

Checked and verified by:

  
**CECILIA L. PASAGUI**  
 Division Manager B - Finance

Noted by:

  
**ENGR. MARIO G. MACATANGAY**  
 Interim General Manager

02/12/2024



**PLARIDEL WATER DISTRICT**  
**STATEMENT OF CASH FLOWS**  
**For the Year Ended December 31, 2023**  
 (With Comparative Figures for CY 2022)

	Note	2023	2022
<b>Cash Flows from Operating Activities</b>			
Cash Inflows			
Proceeds from Sale of Goods and Services	P	113,835,252	P 98,953,375
Collection of Income/Revenues		7,211,755	7,304,365
Collection of Receivables		6,270,792	6,241,795
Other Receipts		1,591,279	11,495,717
Adjustments (Cash Collecting Officers Adjustments - PY Transactions)		-	-
<b>Total Cash Inflows</b>		<b>128,909,078</b>	<b>123,995,252</b>
Cash Outflows			
Payment of Expenses		83,886,305	68,427,719
Purchase of Inventories		9,342,797	9,062,682
Grant of Cash Advances		1,950,936	1,791,585
Refund of Deposits		318	6,676
Payment of Accounts/Other Payable		813,800	652,189
Remittance of Personnel Benefits Contributions and Mandatory Deductions		22,815,845	20,999,157
Others		14,732,596	56,807,169
<b>Total Cash Outflows</b>		<b>133,542,598</b>	<b>157,747,176</b>
<b>Net Cash Provided by (Used in) Operating Activities</b>		<b>(4,633,521)</b>	<b>(33,751,925)</b>
<b>Cash Flows from Investing Activities</b>			
Cash Inflows			
Receipt of Interest Earned		49,031	59,249
<b>Total Cash Inflows</b>		<b>49,031</b>	<b>59,249</b>
Cash Outflows			
Purchase/Construction of PPE		2,260,428	7,915,889
<b>Total Cash Outflows</b>		<b>2,260,428</b>	<b>7,915,889</b>
<b>Net Cash Provided by (Used in) Investing Activities</b>		<b>(2,211,397)</b>	<b>(7,856,639)</b>
<b>Cash Flows from Financing Activities</b>			
Cash Inflows			
Receipts from Loan		71,533,672	-
<b>Total Cash Inflows</b>		<b>71,533,672</b>	-
Cash Outflows			
Bank Charges		7,750	7,450
<b>Total Cash Outflows</b>		<b>7,750</b>	<b>(7,450)</b>
<b>Net Cash Provided by (Used in) Financing Activities</b>		<b>71,525,922</b>	<b>7,450</b>
<b>Increase (Decrease) in Cash and Cash Equivalents</b>		<b>64,681,004</b>	<b>(41,616,014)</b>
<b>Cash and Cash Equivalents, January 1</b>		<b>48,432,889</b>	<b>90,048,903</b>
<b>Cash and Cash Equivalents, December 31</b>	4	<b>P 113,113,893</b>	<b>P 48,432,889</b>

Prepared by:

*Sonnie*  
**TONIE ROSE R. DE VERA**  
 Financial Planning Specialist

Checked and verified by:

*Cecilia I. Pasagui*  
**CECILIA I. PASAGUI**  
 Division Manager B - Finance

Noted by:

*Mario G. Macatangay*  
**ENGR. MARIO G. MACATANGAY**  
 Interim General Manager

02/12/2024



**PLARIDEL WATER DISTRICT  
STATEMENT OF CHANGES IN EQUITY  
For the Year Ended December 31, 2023**

	GOVERNMENT EQUITY	RETAINED EARNINGS	TOTAL
<b>BALANCE AT DECEMBER 31, 2022</b>	<b>₱4,808,060</b>	<b>₱195,697,969</b>	<b>₱200,506,029</b>
Add (Deduct):	-		
Net Income for the year	-	7,725,857	7,725,857
Other Adjustments	-	(117,392)	(117,392)
<b>BALANCE AT DECEMBER 31, 2022</b>	<b>₱4,808,060</b>	<b>₱203,306,434</b>	<b>₱208,114,493</b>

Prepared by:

*tonie*  
**TONIE ROSE R. DE VERA**  
Financial Planning Specialist

Checked and verified by:

*Cecilia*  
**CECILIA L. PASAGUI**  
Division Manager B - Finance

Noted by:

*Mario*  
**ENGR. MARIO G. MACATANGAY**  
Interim General Manager *02/12/2022*



**PLARIDEL WATER DISTRICT**  
A.C.REYES ST POBLACION, PLARIDEL BULACAN  
**DETAILED STATEMENT OF FINANCIAL POSITION**  
As of December 31, 2023  
(With Comparative Figures for CY 2022)

ASSETS	2023		2022	
<b>CURRENT ASSETS</b>				
<b>Cash and Cash Equivalents</b>				
<b>Cash on Hand</b>				
Cash - Collecting Officers	P 259,405.36		P 224,389.15	
Petty Cash	24,000.00		24,000.00	
Local Currency on Hand-Payroll Fund	-	283,405.36	-	248,389.15
<b>Cash in Bank - Local Currency</b>				
Cash in Bank - Local Currency, LBP Current Account	24,332,359.51		21,732,599.22	
Cash in Bank - Local Currency, LBP Savings Account	88,498,128.08	112,830,487.59	26,451,900.42	48,184,499.64
<b>TOTAL CASH AND CASH EQUIVALENTS</b>		<b>P 113,113,892.95</b>		<b>P 48,432,888.79</b>
<b>Receivables</b>				
<b>Loans and Receivable Accounts</b>				
Accounts Receivable	8,251,748.00		7,886,828.77	
Less: Allowance for Impairment - Accounts Receivable	142,066.33	8,109,681.67	142,234.09	7,744,594.68
<b>Other Receivables</b>				
Due from Officers and Employees	-		-	
Other Receivables	1,008,929.93		942,925.36	
Receivables-Disallowances/Charges	1,529,326.39	2,538,256.32	1,909,614.74	2,852,540.10
<b>Inter-Agency Receivables</b>				
Due From National Government Agencies	101,184.17	101,184.17	56,908,353.59	56,908,353.59
<b>TOTAL RECEIVABLES</b>		<b>P 10,749,122.16</b>		<b>P 67,505,488.37</b>
<b>Inventory Held for Consumption</b>				
Office Supplies Inventory	462,574.27		453,524.78	
Accountable Forms, Plates and Stickers Inventory	454,422.01		469,514.52	
Chemical and Filtering Supplies Inventory	14,823.33		14,823.33	
Construction Materials Inventory	11,406,542.74		7,673,180.08	
Other Supplies and Material Inventory	3,369.04	12,341,731.39	3,369.04	8,614,411.75
<b>TOTAL INVENTORIES</b>		<b>P 12,341,731.39</b>		<b>P 8,614,411.75</b>
<b>Other Assets</b>				
<b>Prepayments</b>				
Other Deferred Charges	1,361,479.28		845,513.95	
Withholding Tax at Source	-		3,219.49	
Other Prepayments	331,600.00	1,693,079.28	331,600.00	1,180,333.44
<b>TOTAL OTHER CURRENT ASSETS</b>		<b>P 1,693,079.28</b>		<b>P 1,180,333.44</b>
<b>TOTAL CURRENT ASSETS</b>		<b>P 137,897,825.78</b>		<b>P 125,733,122.35</b>
<b>Property, Plant and Equipment</b>				
<b>Land</b>				
Land	8,304,214.00	8,304,214.00	8,304,214.00	8,304,214.00
<b>Utility Plant In Service</b>				
Structures & Improvements	1,969,136.52		1,305,082.32	
Less: Accumulated Depreciation-Structures & Improvements	794,754.34	1,174,382.18	676,956.53	628,125.79
PP Structures & Improvements	10,256,640.71		9,632,464.05	
Less: Accumulated Depreciation-PP Structures & Improvements	3,880,411.33	6,376,229.38	3,212,124.25	6,420,339.80
Other General Plant	2,360,255.00		2,452,797.84	
Less: Accumulated Depreciation-General plant	1,040,966.10	1,319,288.90	1,589,986.94	862,810.90
Wells	21,283,077.83		21,285,265.85	
Less: Accumulated Depreciation - Wells	8,328,887.14	12,954,190.69	7,745,841.51	13,539,424.34
Reservoir and tanks	1,410,426.95		1,410,426.95	
Less: Accumulated Depreciation - Reservoir and tanks	768,431.12	641,995.83	731,527.33	678,899.62
Transmission and Distribution Mains	77,186,003.69		75,895,498.28	
Less: Accumulated Depreciation - Transmission and Distribution Mains	34,198,619.42	42,987,384.27	32,424,830.41	43,470,667.87
Meters	23,516,360.27		21,823,935.12	
Less: Accumulated Depreciation - Meters	16,749,375.16	6,766,985.11	11,919,879.11	9,904,056.01
Meter Installations	-		-	
Less: Accumulated Depreciation - Meter Installations	-	-	-	-
<b>Buildings and Other Structures</b>				
Buildings	6,623,700.29		6,583,705.29	
Less: Accumulated Depreciation - Buildings	3,572,587.42	3,051,112.87	3,405,953.50	3,177,751.79
<b>Machinery and Equipment</b>				
Office Equipment	1,545,128.50		1,339,294.71	
Less: Acc. Dep'n - Office Equipment	1,234,131.53	310,996.97	1,261,948.07	77,346.64
Information and Communication Technology Equipment	6,627,739.00		5,694,398.09	
Less: Acc. Dep'n - Information and Communication Technology Equipment	4,823,076.31	1,804,662.69	5,709,637.04	(15,238.95)





**PLARIDEL WATER DISTRICT**  
A.C. REYES ST POBLACION, PLARIDEL BULACAN  
**DETAILED STATEMENT OF FINANCIAL POSITION**  
As of December 31, 2023  
(With Comparative Figures for CY 2022)

	2023	2022
Construction and Heavy Equipment	202,085.00	243,525.75
Less: Accumulated Depreciation - Construction and Heavy Equipment	104,499.53	63,135.78
	97,585.47	180,389.97
Other Equipment	2,947,694.78	3,821,979.72
Less: Other Equipment	1,345,274.04	597,829.47
	1,602,420.74	3,224,150.25
<b>Transportation Equipment</b>		
Motor Vehicles	9,550,390.00	9,822,495.37
Less: Accumulated Depreciation - Motor Vehicles	5,877,005.18	6,509,089.42
	3,673,384.82	3,313,405.95
<b>Furniture, Fixtures and Books</b>		
Furniture and Fixtures	422,360.00	475,960.00
Less: Accumulated Depreciation - Furniture and Fixtures	380,124.00	364,426.50
	42,236.00	111,533.50
<b>Other Property, Plant and Equipment</b>		
Pumping Equipment	11,708,516.57	10,529,298.48
Less: Accumulated Depreciation - Pumping Equipment	8,241,913.54	6,667,710.91
	3,466,603.03	3,861,587.57
Other Machinery Plant Equipment	4,323,681.50	4,797,438.50
Less: Accumulated Depreciation - Other Equipment	2,812,666.05	3,799,801.00
	1,511,015.45	997,637.50
Water Treatment Plant	2,033,700.00	1,419,458.20
Less: Accumulated Depreciation - Water Treatment Plant	1,217,600.13	1,028,091.90
	816,099.87	391,366.30
<b>Construction In Progress</b>	88,483,449.55	88,483,449.55
	3,560,583.32	3,560,583.32
<b>TOTAL PROPERTY, PLANT AND EQUIPMENT</b>	<b>P 185,384,237.82</b>	<b>P 102,689,052.17</b>
<b>Investments</b>		
<b>Sinking Fund</b>		
Sinking Fund - PLAWD & LWUA Joint Savings Account	1,031,042.06	1,025,644.94
	1,031,042.06	1,025,644.94
<b>TOTAL INVESTMENTS</b>	<b>P 1,031,042.06</b>	<b>P 1,025,644.94</b>
<b>Other Assets</b>		
<b>Other Assets</b>		
Other Assets	598,440.31	598,440.31
	598,440.31	598,440.31
<b>Deposits</b>		
Guaranty Deposits	656,338.03	656,338.03
	656,338.03	656,338.03
<b>TOTAL OTHER NON CURRENT ASSETS</b>	<b>P 1,254,778.34</b>	<b>P 1,254,778.34</b>
<b>TOTAL NON-CURRENT ASSETS</b>	<b>P 187,670,058.22</b>	<b>P 104,969,475.45</b>
<b>TOTAL ASSETS</b>	<b>P 325,567,884.00</b>	<b>P 230,702,597.80</b>
<b>LIABILITIES</b>		
<b>CURRENT LIABILITIES</b>		
<b>Financial Liabilities</b>		
<b>Payables</b>		
Accounts Payable	5,618,365.13	4,833,855.08
Due to Officers and Employees	7,614,797.32	13,233,162.45
	13,233,162.45	7,726,426.91
	12,560,281.99	12,560,281.99
<b>TOTAL FINANCIAL LIABILITIES</b>	<b>P 13,233,162.45</b>	<b>P 12,560,281.99</b>
<b>Provisions</b>		
Leave Benefits Payable	6,512,455.79	5,974,426.30
	6,512,455.79	5,974,426.30
<b>TOTAL PROVISIONS</b>	<b>P 6,512,455.79</b>	<b>P 5,974,426.30</b>
<b>Other Payables</b>		
Other Payables	9,075,685.40	690,634.29
	9,075,685.40	690,634.29
<b>TOTAL OTHER PAYABLES</b>	<b>P 9,075,685.40</b>	<b>P 690,634.29</b>
<b>Inter-Agency Payables</b>		
Due to BIR	5,849,424.54	1,125,538.79
Due to GSIS	1,626,814.34	1,559,293.64
Due to Pag-ibig	58,492.97	57,438.76
Due to Philhealth	91,678.20	88,596.20
Other Financial Liabilities/Due to Other Financial Institutions	53,397.24	159,096.24
	7,679,807.29	2,989,963.63
<b>TOTAL INTER-AGENCY PAYABLES</b>	<b>P 7,679,807.29</b>	<b>P 2,989,963.63</b>
<b>Intra-Agency Payables</b>		
Due to Other Funds	30,659.33	30,659.33
	30,659.33	30,659.33
<b>TOTAL INTRA-AGENCY PAYABLES</b>	<b>P 30,659.33</b>	<b>P 30,659.33</b>
<b>Trust Liabilities</b>		
Guaranty/Security Deposits Payable	-	-
Customers' Deposits Payable	9,387,948.85	7,950,603.50
	9,387,948.85	7,950,603.50
<b>TOTAL TRUST LIABILITIES</b>	<b>P 9,387,948.85</b>	<b>P 7,950,603.50</b>
<b>TOTAL CURRENT LIABILITIES</b>	<b>P 45,919,719.11</b>	<b>P 30,196,569.04</b>



**PLARIDEL WATER DISTRICT**  
A.C.REYES ST POBLACION, PLARIDEL BULACAN  
**DETAILED STATEMENT OF FINANCIAL POSITION**  
As of December 31, 2023  
(With Comparative Figures for CY 2022)

	2023	2022	
<b>NON-CURRENT LIABILITIES</b>			
<b>Financial Liabilities</b>			
<b>Loans Payable</b>			
Loans Payable - Domestic	71,533,671.67	71,533,671.67	-
<b>TOTAL FINANCIAL LIABILITIES</b>	<b>P 71,533,671.67</b>		<b>P -</b>
<b>TOTAL NON-CURRENT LIABILITIES</b>	<b>P 71,533,671.67</b>		<b>P -</b>
<b>TOTAL LIABILITIES</b>	<b>P 117,453,390.78</b>		<b>P 30,196,569.04</b>
<b>EQUITY</b>			
<b>Government Equity</b>			
<b>Government Equity</b>			
Government Equity	4,808,059.60	4,808,059.60	4,808,059.60
<b>Retained Earnings/(Deficit)</b>			
<b>Retained Earnings/(Deficit)</b>			
Retained Earnings/(Deficit)	195,580,576.74		188,904,961.40
Add: Net Income/(Loss)	7,725,856.88	203,306,433.62	6,793,007.76
<b>TOTAL EQUITY</b>	<b>P 208,114,493.22</b>		<b>P 200,506,028.76</b>
<b>TOTAL LIABILITIES AND EQUITY</b>	<b>P 325,567,884.00</b>		<b>P 230,702,597.80</b>

Prepared by:

*tonie*  
TONIE ROSE R. DE VERA  
Financial Planning Specialist

Checked and verified by:

*Cecilia*  
CECILIA L. PASAGUI  
Division Manager - Finance

Noted by:

*Mario*  
ENGR. MARIO G. MACATANGAY  
Interim General Manager

02/12/2024



**PLARIDEL WATER DISTRICT**  
A.C.REYES ST POBLACION, PLARIDEL BULACAN  
**DETAILED STATEMENT OF FINANCIAL PERFORMANCE**  
**For the Year Ended December 31, 2023**  
*(With Comparative Figures for CY 2022)*

	2023	2022
<b>INCOME</b>		
<b>Service and Business Income</b>		
<b>Business Income</b>		
Sales Revenue	110,510,487.70	95,054,961.91
Sales Discounts	(37,983.40)	(31,933.80)
Net Sales	110,472,504.30	95,023,028.11
Interest Income	54,327.98	102,069.29
Fines and Penalties-Business Income	4,051,196.73	3,719,451.15
Other Business Income	4,131,243.49	4,494,062.61
<b>TOTAL BUSINESS INCOME</b>	<b>118,709,272.50</b>	<b>103,338,611.16</b>
<b>TOTAL SERVICE AND BUSINESS INCOME</b>	<b>118,709,272.50</b>	<b>103,338,611.16</b>
<b>Miscellaneous Income</b>		
Miscellaneous Income	6,803,249.45	6,236,603.66
<b>TOTAL MISCELLANEOUS INCOME</b>	<b>6,803,249.45</b>	<b>6,236,603.66</b>
<b>TOTAL OTHER NON-OPERATING INCOME</b>	<b>6,803,249.45</b>	<b>6,236,603.66</b>
<b>TOTAL INCOME</b>	<b>125,512,521.95</b>	<b>109,575,214.82</b>
<b>EXPENSES</b>		
<b>PERSONNEL SERVICES</b>		
<b>Salaries and Wages</b>		
Salaries and Wages-Regular	25,868,173.32	25,274,669.10
Salaries and Wages-Casual/Contractual	2,697,552.42	2,400,080.70
<b>TOTAL SALARIES AND WAGES</b>	<b>28,565,725.74</b>	<b>27,674,749.80</b>
<b>Other Compensation</b>		
Personnel Economic Relief Allowance (PERA)	1,966,000.00	2,008,909.10
Representation Allowance (RA)	240,000.00	342,000.00
Transportation Allowance (TA)	240,000.00	342,000.00
Clothing/Uniform Allowance	492,000.00	498,000.00
Quarters Allowance	-	42,000.00
Productivity Incentive Allowance	410,000.00	410,000.00
Honoraria	931,770.00	1,209,720.00
Longevity Pay	191,639.93	81,000.00
Overtime and Night Pay	391,609.31	350,579.91
Year End Bonus	2,157,748.00	2,121,912.30
Cash Gift	410,000.00	418,500.00
Other Bonuses and Allowances	1,298,612.51	-
Mid-Year Bonus	2,156,631.00	2,119,926.00
<b>TOTAL OTHER COMPENSATION</b>	<b>10,886,010.75</b>	<b>9,944,547.31</b>
<b>Personnel Benefit Contributions</b>		
Retirement and Life Insurance Premiums	3,104,174.70	3,705,754.98
Pag-IBIG Contributions	98,300.00	100,100.00
PhilHealth Contributions	502,668.38	484,625.86
Employees Compensation Insurance Premiums	98,300.00	104,900.00
<b>TOTAL PERSONNEL BENEFIT CONTRIBUTIONS</b>	<b>3,803,443.08</b>	<b>4,395,380.84</b>



**PLARIDEL WATER DISTRICT**  
A.C.REYES ST POBLACION, PLARIDEL BULACAN  
**DETAILED STATEMENT OF FINANCIAL PERFORMANCE**  
**For the Year Ended December 31, 2023**  
*(With Comparative Figures for CY 2022)*

	<u>2023</u>	<u>2022</u>
<b>Other Personnel Benefits</b>		
Terminal Leave Benefits	2,068,298.72	2,548,643.23
<b>TOTAL OTHER PERSONNEL BENEFITS</b>	<b>2,068,298.72</b>	<b>2,548,643.23</b>
<b>TOTAL PERSONNEL SERVICES</b>	<b>45,323,478.29</b>	<b>44,563,321.18</b>
<b>MAINTENANCE AND OTHER OPERATING EXPENSES</b>		
<b>Traveling Expenses</b>		
Traveling Expenses-Local	672,925.22	260,812.90
<b>TOTAL TRAVELING EXPENSES</b>	<b>672,925.22</b>	<b>260,812.90</b>
<b>Training and Scholarship Expenses</b>		
Training Expenses	299,060.00	412,351.29
<b>TOTAL TRAINING AND SCHOLARSHIP EXPENSES</b>	<b>299,060.00</b>	<b>412,351.29</b>
<b>Supplies and Materials Expenses</b>		
Office Supplies Expenses	231,078.04	683,313.53
Accountable Forms Expenses	438,370.11	388,143.33
Fuel, Oil and Lubricants Expenses	691,007.32	784,947.92
Chemical and Filtering Supplies Expenses	925,764.00	1,247,510.00
Semi-Expendable Machinery and Equipment Expenses	629,462.48	846,536.60
Semi-Expendable Furniture, Fixtures and Books Expenses	75,092.00	161,960.68
Other Supplies and Materials Expenses	281,300.66	619,837.17
<b>TOTAL SUPPLIES AND MATERIALS EXPENSES</b>	<b>3,272,074.61</b>	<b>4,732,249.23</b>
<b>Utility Expenses</b>		
Water Expenses	31,844.85	32,666.15
Electricity Expenses	777,266.72	686,873.24
<b>TOTAL UTILITY EXPENSES</b>	<b>809,111.57</b>	<b>719,539.39</b>
<b>Communication Expenses</b>		
Postage and Courier Services	7,670.00	1,771.00
Telephone Expenses	166,025.54	148,165.76
Internet Subscription Expenses	122,839.12	121,796.20
<b>TOTAL COMMUNICATION EXPENSES</b>	<b>296,534.66</b>	<b>271,732.96</b>
<b>Generation, Transmission and Distribution Expenses</b>		
Generation, Transmission and Distribution Expenses	46,019,093.89	31,327,679.93
<b>TOTAL GENERATION, TRANSMISSION AND DISTRIBUTION EXPENSES</b>	<b>46,019,093.89</b>	<b>31,327,679.93</b>
<b>Confidential, Intelligence and Extraordinary Expenses</b>		
Extraordinary and Miscellaneous Expenses	73,961.59	119,341.96
<b>TOTAL CONFIDENTIAL, INTELLIGENCE AND EXTRAORDINARY EXPENSES</b>	<b>73,961.59</b>	<b>119,341.96</b>
<b>Professional Services</b>		
Legal Services	252,320.00	261,600.00
Auditing Services	227,181.00	279,787.85
Consultancy Services	250,000.00	200,000.00
<b>TOTAL PROFESSIONAL SERVICES</b>	<b>729,501.00</b>	<b>741,387.85</b>



**PLARIDEL WATER DISTRICT**  
A.C.REYES ST POBLACION, PLARIDEL BULACAN  
**DETAILED STATEMENT OF FINANCIAL PERFORMANCE**  
**For the Year Ended December 31, 2023**  
*(With Comparative Figures for CY 2022)*

	<u>2023</u>	<u>2022</u>
<b>General Services</b>		
Environmental/Sanitary Services	962,500.00	-
Security Services	3,100,799.06	2,414,144.50
<b>TOTAL GENERAL SERVICES</b>	<u><b>4,063,299.06</b></u>	<u><b>2,414,144.50</b></u>
<b>Repairs and Maintenance</b>		
Repairs and Maintenance-Infrastructure Assets	1,744,328.60	1,708,412.18
Repairs and Maintenance-Buildings and Other Structures	45,149.00	31,200.19
Repairs and Maintenance-Machinery and Equipment	216,184.05	154,654.50
Repairs and Maintenance-Transportation Equipment	215,799.16	227,225.41
Repairs and Maintenance-Furniture and Fixtures	1,143.00	1,693.00
Repairs and Maintenance-Other Property, Plant and Equipment	-	8,835.00
<b>TOTAL REPAIRS AND MAINTENANCE</b>	<u><b>2,222,603.81</b></u>	<u><b>2,132,020.28</b></u>
<b>Taxes, Insurance Premiums and Other Fees</b>		
Taxes, Duties and Licenses	2,319,374.97	2,019,717.35
Fidelity Bond Premiums	33,555.00	31,181.25
Insurance Expenses	377,933.00	428,412.31
<b>TOTAL TAXES, INSURANCE PREMIUMS AND OTHER FEES</b>	<u><b>2,730,862.97</b></u>	<u><b>2,479,310.91</b></u>
<b>Other Maintenance and Operating Expenses</b>		
Advertising, Promotional and Marketing Expenses	2,400.00	39,035.00
Printing and Publication Expenses	143,040.00	203,945.00
Representation Expenses	174,206.59	243,499.59
Rent/Lease Expenses	120,000.00	120,000.00
Membership Dues and Contributions to Organizations	89,307.50	84,140.00
Donations	-	-
Other Maintenance and Operating Expenses	3,075,653.61	4,861,555.67
<b>TOTAL OTHER MAINTENANCE AND OPERATING EXPENSES</b>	<u><b>3,604,607.70</b></u>	<u><b>5,552,175.26</b></u>
<b>TOTAL MAINTENANCE AND OTHER OPERATING EXPENSES</b>	<u><b>64,793,636.08</b></u>	<u><b>51,162,746.46</b></u>
<b>NON-CASH EXPENSES</b>		
<b>Depreciation</b>		
Depreciation-Infrastructure Assets	2,323,115.40	2,330,698.44
Depreciation-Buildings and Other Structures	198,711.00	198,711.00
Depreciation-Machinery and Equipment	872,810.74	1,042,553.37
Depreciation-Transportation Equipment	632,736.25	475,614.32
Depreciation-Furniture, Fixtures and Books	-	27,564.00
Depreciation-Other Property, Plant and Equipment	3,395,773.44	2,844,010.62
<b>TOTAL DEPRECIATION</b>	<u><b>7,423,146.83</b></u>	<u><b>6,919,151.75</b></u>
<b>Impairment Loss</b>		
Impairment Loss-Loans and Receivables	238,653.87	129,537.67
Impairment Loss-Inventories	-	-
<b>Total Impairment Loss</b>	<u><b>238,653.87</b></u>	<u><b>129,537.67</b></u>
<b>TOTAL NON-CASH EXPENSES</b>	<u><b>7,661,800.70</b></u>	<u><b>7,048,689.42</b></u>



**PLARIDEL WATER DISTRICT**  
A.C.REYES ST POBLACION, PLARIDEL BULACAN  
**DETAILED STATEMENT OF FINANCIAL PERFORMANCE**  
**For the Year Ended December 31, 2023**  
*(With Comparative Figures for CY 2022)*

	2023	2022
<b>FINANCIAL EXPENSES</b>		
<b>Financial Expenses</b>		
Bank Charges	7,750.00	7,450.00
<b>TOTAL FINANCIAL EXPENSES</b>	<b>7,750.00</b>	<b>7,450.00</b>
<b>TOTAL FINANCIAL EXPENSES</b>	<b>7,750.00</b>	<b>7,450.00</b>
<b>TOTAL EXPENSES</b>	<b>117,786,665.07</b>	<b>102,782,207.06</b>
<b>NET INCOME/(LOSS)</b>	<b>7,725,856.88</b>	<b>6,793,007.76</b>
<b>COMPREHENSIVE INCOME/(LOSS)</b>	<b>7,725,856.88</b>	<b>6,793,007.76</b>

Prepared by:

  
**TONIE ROSE R. DE VERA**  
Financial Planning Specialist

Checked and verified by:

  
**CECILIA L. PASAGUI**  
Division Manager - Finance

Noted by:

  
**ENGR. MARIO G. MACATANGAY**  
Interim General Manager

02/12/2024



**PLARIDEL WATER DISTRICT**  
**A.C.REYES ST POBLACION, PLARIDEL BULACAN**  
**DETAILED CASH FLOW STATEMENT**  
**(GENERAL FUND)**  
**For the Year Ended December 31, 2023**  
*(With Comparative Figures for CY 2022)*

	2023	2022
<b>CASH FLOWS FROM OPERATING ACTIVITIES</b>		
Proceeds from sales revenue	113,835,251.86	98,953,375.34
Proceeds from miscellaneous income & water meter maintenance fee	9,279,599.41	9,067,795.28
Proceeds from other business income	4,202,947.23	4,478,364.12
Receipts from guaranty/security deposit	-	431,141.68
Receipts from customers' deposit	1,586,720.85	744,003.05
Restoration of cash for cancelled/lost/stale checks/ADA	4,558.35	20,572.13
Transfer of Funds from PLAWD-LWUA JSA	-	10,300,000.00
<b>Total cash inflows</b>	<b>128,909,077.70</b>	<b>123,995,251.60</b>
Payment of maintenance expense	54,794,719.67	39,991,410.31
Payment of personnel expense	29,091,585.78	28,436,308.49
Inter-agency remittance	22,815,844.89	20,999,157.05
Purchase of construction materials inventory	9,125,784.71	8,436,655.42
Advances to officers and employees	1,950,936.39	1,791,585.02
Payment of supplies and other payables	217,012.26	626,026.08
Payment of retention payable	813,800.49	652,188.52
Refund of excess income	6,094.00	-
Refund of customers' deposit	318.00	6,676.00
Due from NGA	14,726,502.25	56,807,169.42
<b>Total cash outflows</b>	<b>133,542,598.44</b>	<b>157,747,176.31</b>
<b>Net cash provided in operating activities</b>	<b>(4,633,520.74)</b>	<b>(33,751,924.71)</b>
<b>CASH FLOWS FROM INVESTING ACTIVITIES</b>		
Interest income received	49,030.86	59,249.46
<b>Total cash inflow</b>	<b>49,030.86</b>	<b>59,249.46</b>
Purchase of other property, plant and equipment	245,917.24	1,283,385.17
Purchase of IT equipment and software	577,909.57	574,919.44
Purchase of office equipment	79,875.00	95,767.73
Purchase of UPIS - transmission & distributions	548,026.25	300,468.75
Construction in progress	273,460.00	765,905.00
Purchase of other machinery and equipment	535,239.57	132,446.80
Purchase of furniture and fixture	-	21,273.82
Purchase of motor vehicles	-	3,041,722.00
Purchase of construction & heavy equipment	-	-
Funding of Reserves (PLAWD-LWUA Joint SA)	-	1,700,000.00
<b>Total cash outflows</b>	<b>2,260,427.63</b>	<b>7,915,888.71</b>
<b>Net cash used in investing activities</b>	<b>(2,211,396.77)</b>	<b>(7,856,639.25)</b>
<b>CASH FLOWS FROM FINANCING ACTIVITIES</b>		
Receipts from loan	71,533,671.67	-
<b>Total cash inflow</b>	<b>71,533,671.67</b>	<b>-</b>
Payment of interest on loans and other financial charges	7,750.00	7,450.00
<b>Total cash outflows</b>	<b>7,750.00</b>	<b>7,450.00</b>
<b>Net cash provided in financing activities</b>	<b>71,525,921.67</b>	<b>(7,450.00)</b>
<b>NET INCREASE IN CASH AND CASH EQUIVALENTS</b>	<b>64,681,004.16</b>	<b>(41,616,013.96)</b>
<b>CASH AND CASH EQUIVALENTS AT BEGINNING OF THE PERIOD/YEAR</b>	<b>48,432,888.79</b>	<b>90,048,902.75</b>
<b>CASH AND CASH EQUIVALENTS AT END OF THE PERIOD</b>	<b>113,113,892.95</b>	<b>48,432,888.79</b>

Prepared by:

*Samie*  
**TONIE ROSE R. DE VERA**  
 Financial Planning Specialist

Checked and verified by:

*Cecilia L. Pasagui*  
**CECILIA L. PASAGUI**  
 Division Manager - Finance

Noted by:

*Mario G. Macatangay*  
**ENGR. MARIO G. MACATANGAY**  
 Interim General Manager

02/12/2024

## ANNEX D - APPROVED WATER RATES SCHEDULE

**SCHEDULE OF APPROVED WATER RATES**  
**PLARIDEL WATER DISTRICT**  
 Per LWUA Board Resolution No. 08, Series of 2022

Effective March 2022 (after the lapse of seven (7) calendar days posting period)  
 March 2022 Consumption; April 2022 Billing

Classification	Size	Min. Charge	Commodity Charges				
			11-20 m <sup>3</sup>	21-30 m <sup>3</sup>	31-40 m <sup>3</sup>	41-50 m <sup>3</sup>	51-Up m <sup>3</sup>
Residential/Government	1/2"	124.00	13.20	14.75	16.45	18.30	20.30
	3/4"	198.40	13.20	14.75	16.45	18.30	20.30
	1"	396.80	13.20	14.75	16.45	18.30	20.30
	1-1/2"	992.00	13.20	14.75	16.45	18.30	20.30
	2"	2,480.00	13.20	14.75	16.45	18.30	20.30
	3"	4,464.00	13.20	14.75	16.45	18.30	20.30
	4"	8,928.00	13.20	14.75	16.45	18.30	20.30
	6"	14,880.00	13.20	14.75	16.45	18.30	20.30
	8"	23,808.00	13.20	14.75	16.45	18.30	20.30
10"	34,224.00	13.20	14.75	16.45	18.30	20.30	
Comm'l/Ind'l	1/2"	248.00	26.40	29.50	32.90	36.60	40.60
	3/4"	396.80	26.40	29.50	32.90	36.60	40.60
	1"	793.60	26.40	29.50	32.90	36.60	40.60
	1-1/2"	1,984.00	26.40	29.50	32.90	36.60	40.60
	2"	4,960.00	26.40	29.50	32.90	36.60	40.60
	3"	8,928.00	26.40	29.50	32.90	36.60	40.60
	4"	17,856.00	26.40	29.50	32.90	36.60	40.60
	6"	29,760.00	26.40	29.50	32.90	36.60	40.60
	8"	47,616.00	26.40	29.50	32.90	36.60	40.60
10"	68,448.00	26.40	29.50	32.90	36.60	40.60	
Commercial A	1/2"	217.00	23.10	25.80	28.75	32.00	35.50
	3/4"	347.20	23.10	25.80	28.75	32.00	35.50
	1"	694.40	23.10	25.80	28.75	32.00	35.50
	1-1/2"	1,736.00	23.10	25.80	28.75	32.00	35.50
	2"	4,340.00	23.10	25.80	28.75	32.00	35.50
	3"	7,812.00	23.10	25.80	28.75	32.00	35.50
	4"	15,624.00	23.10	25.80	28.75	32.00	35.50
	6"	26,040.00	23.10	25.80	28.75	32.00	35.50
	8"	41,664.00	23.10	25.80	28.75	32.00	35.50
10"	59,892.00	23.10	25.80	28.75	32.00	35.50	
Commercial B	1/2"	186.00	19.80	22.10	24.65	27.45	30.45
	3/4"	297.60	19.80	22.10	24.65	27.45	30.45
	1"	595.20	19.80	22.10	24.65	27.45	30.45
	1-1/2"	1,488.00	19.80	22.10	24.65	27.45	30.45
	2"	3,720.00	19.80	22.10	24.65	27.45	30.45
	3"	6,696.00	19.80	22.10	24.65	27.45	30.45
	4"	13,392.00	19.80	22.10	24.65	27.45	30.45
	6"	22,320.00	19.80	22.10	24.65	27.45	30.45
	8"	35,712.00	19.80	22.10	24.65	27.45	30.45
10"	51,336.00	19.80	22.10	24.65	27.45	30.45	



**SCHEDULE OF APPROVED WATER RATES**  
**PLARIDEL WATER DISTRICT (BULACAN)**  
**Per LWUA Board Resolution No. 08, Series of 2022**  
**Page 2 of 2**

Classification	Size	Min. Charge	Commodity Charges				
			11-20 m <sup>3</sup>	21-30 m <sup>3</sup>	31-40 m <sup>3</sup>	41-50 m <sup>3</sup>	51-Up m <sup>3</sup>
Commercial C	1/2"	155.00	16.50	18.40	20.55	22.85	25.35
	3/4"	248.00	16.50	18.40	20.55	22.85	25.35
	1"	496.00	16.50	18.40	20.55	22.85	25.35
	1-1/2"	1,240.00	16.50	18.40	20.55	22.85	25.35
	2"	3,100.00	16.50	18.40	20.55	22.85	25.35
	3"	5,580.00	16.50	18.40	20.55	22.85	25.35
	4"	11,160.00	16.50	18.40	20.55	22.85	25.35
	6"	18,600.00	16.50	18.40	20.55	22.85	25.35
	8"	29,760.00	16.50	18.40	20.55	22.85	25.35
10"	42,780.00	16.50	18.40	20.55	22.85	25.35	
Bulk/Wholesale	1/2"	372.00	39.60	44.25	49.35	54.90	60.90
	3/4"	595.20	39.60	44.25	49.35	54.90	60.90
	1"	1,190.40	39.60	44.25	49.35	54.90	60.90
	1-1/2"	2,976.00	39.60	44.25	49.35	54.90	60.90
	2"	7,440.00	39.60	44.25	49.35	54.90	60.90
	3"	13,392.00	39.60	44.25	49.35	54.90	60.90
	4"	26,784.00	39.60	44.25	49.35	54.90	60.90
	6"	44,640.00	39.60	44.25	49.35	54.90	60.90
	8"	71,424.00	39.60	44.25	49.35	54.90	60.90
	10"	102,672.00	39.60	44.25	49.35	54.90	60.90

  
**GUILING "GENE" A. MAMONDIONG**  
 Administrator

## ANNEX E - SUMMARY OF WATER PRODUCTION AND CONSUMPTION

	2023												
	Jan	Feb	Mar	Apr	May	Jun	Jul	Aug	Sep	Oct	Nov	Dec	Year-to-Date
No. of Days	31	28	31	30	31	30	31	31	30	31	30	31	365
Production (cu. M.)	647,202	600,807	677,524	653,526	680,833	667,489	667,555	680,341	664,081	740,965	693,235	716,126	8,089,684
Billed Volume (cu. M.)	513,022	475,445	523,401	542,107	524,204	539,598	548,027	506,404	550,755	527,887	554,965	533,634	6,339,449
Percent Non-Revenue Water (NRW)	20.73%	20.87%	22.75%	17.05%	23.01%	19.16%	17.91%	25.57%	17.07%	28.76%	19.95%	25.48%	21.64%
Population Served	89,583	90,090	90,453	90,722	91,018	91,599	91,724	91,958	92,013	92,364	92,528	93,163	93,163
LCPD based on MDS (Residential Consumption)	134.50	123.40	135.60	180.50	173.90	178.20	180.00	166.20	179.50	171.50	179.80	172.30	164.62
LCPD Overall Billed	184.73	188.48	186.66	199.18	185.78	196.36	192.73	177.64	199.52	198.32	215.44	200.47	193.78

## ANNEX F - WATER SOURCES

Pump Station	Location (Brgy.)	Depth (m)	Discharge (L/s)
PS 02	Tabang	185	67.00
PS 03	Bintog	52	32.60
PS 04	Sipat	101	48.12
PS 06	Culianin	65	24.45
PS 07	Parulan	78	28.60
PS 08	Bulihan	78	28.60
PS 09	Lalangan	141	34.18
PS 10	Tabang (Sitio Santiago)	140	30.17

## ANNEX G - SERVICE CONNECTION GROWTH

<b>Service Connection Data</b>	<b>2022</b>	<b>2023</b>	<b>Growth</b>
Total Service (Active + Inactive)	24,876	25,935	1,059
Total Active	22,945	23,888	943
Total metered	23,023	23,945	922
Total billed	23,023	23,945	922
No. of Active Connections (metered)			0
Residential/Domestic	20,954	21,782	828
Government	90	97	7
Commercial/Industrial	1,977	2,061	84
Full Commercial	441	491	50
Commercial A	359	356	-3
Commercial B	380	436	56
Commercial C	797	778	-19
Commercial D	-	-	-
Bulk/Wholesale	2	5	3
Total Active Connections (metered)	23,023	23,945	922

## ANNEX H - LIST OF MAJOR EQUIPMENT

Article	Date of Acquisition	Property No.	Unit Value	Total Accumulated Depreciation as of CY 2023	Net Book Value as of CY 2023
Carrier Split Type Aircon & Carrier Window Type Aircon	01/08/2006	221 -0000000-06	109,070.00	98,163.00	10,907.00
Xerox Machine-Sharp AR153E	01/12/2006	221 -0000000-07	54,500.00	49,050.00	5,450.00
Carrier Ceiling Mounted 3TR Airconditioner	30/11/2010	221 -0000000-22	79,290.00	71,361.00	7,929.00
One(1) unit Carrier Ceiling Mounted 3-Toner A/C	31/12/2011	221 -0000000-26	83,995.00	75,595.50	8,399.50
One(1) unit Carrier Ceiling Mounted 3-Toner A/C	31/12/2011	221 -0000000-27	83,995.00	75,595.50	8,399.50
One(1) unit Digital iR2520 Copier	31/05/2012	221 -0000000-29	100,000.00	90,000.00	10,000.00
IP-PBX and Text Blast Application. DR# 015 dated Feb. 08, 2017. Lakbay	14/02/2017	221 -0000000-81	420,000.00	378,000.00	42,000.00
One(1) unit airconditioning unit for ground floor of PLAWD Building as per PO# 2017-11-217 dated Nov.24, 2017.	01/12/2017	221 -0000000-107	54,995.00	49,495.50	5,499.50
One(1) unit of Carrier FP53FLC-AS B036230 Airconditioning Unit for Commercial Division. Under RR#2018-05-126 PR# PLAWD 2018-05-098 AF 2018-05-067. wintercool	29/06/2018	COM-221-014	95,800.00	86,220.00	9,580.00
One(1) unit Carrier 53 3HP (Ceiling Type 3-Toner) Airconditioning unit) for PLAWD office first floor - Cash Management Area. Under PO#18-07-184 PR# PLAWD 18-07-136	02/08/2018	AF-221-016	95,500.00	85,950.00	9,550.00

AF 18-07-096. wintercool					
One(1) unit 3HP split type aircon for GS under RR#21-10-163 PO#21-10-109 BS#0963 DR#2021- 1016 DV#21-10-0060. Wintercrib	26/10/2021	221 -0000000-21	69,129.05	26,960.33	42,168.72
One(1) unit Photocopier Canon IR Advance 6055 for the Office of the General Manager under PO#2018-01-009 dated Jan. 29, 2018. copieronline	02/02/2018	FIN-221-030	130,000.00	117,000.00	13,000.00
One (1) unit of airconditioner for Customer's Waiting Are under RR#22-06- 123 PO#22-05-070 SI#1059 DR#EC-GPAU- 2022-002.Extremeccoo	30/06/2022	221 -0000221- 022	78,854.45	21,290.70	57,563.75
One (1) unit 3HP Ceiling Suspended Type Aircon for Finance Division Area under RR#2023-05-080 PR#ADM 2023-04-017 PO#2023-04-061 DR#AC-AU-2023-034 SI#1549 & 1566.	26/05/2023	221 -0000001- 031	90,000.00	9,450.00	80,550.00
<b>Office Equipment</b>			1,545,128.50	1,234,131.53	310,996.97

Article	Date of Acquisition	Property No.	Unit Value	Total Accumulated Depreciation as of CY 2023	Net Book Value as of CY 2023
Computer set (GM)	31/12/1998	223 -0000000-05	60,600.00	54,540.00	6,060.00
printer (N. Castro)/ Unit of Intel Computer	24/02/2005	223 -0000000-22	53,830.00	48,447.00	5,383.00
Billing and Collection Program	31/12/2007	223 -0000000-46	60,000.00	54,000.00	6,000.00
Upgrading of Computers due to licensing	31/05/2009	223 -0000000-51	84,000.00	75,600.00	8,400.00
Billing and Collection	23/07/2009	223 -0000000-52	60,000.00	54,000.00	6,000.00

Janam w/ back-up card DPP-250 Printer	30/06/2010	223 -0000000-56	100,800.00	90,720.00	10,080.00
Janam w/ back-up card DPP-250 Printer	30/06/2010	223 -0000000-57	100,800.00	90,720.00	10,080.00
Janam w/ back-up card DPP-250 Printer	30/06/2010	223 -0000000-58	100,800.00	90,720.00	10,080.00
Janam w/ back-up card DPP-250 Printer	30/06/2010	223 -0000000-59	100,800.00	90,720.00	10,080.00
One(1) unit Computer set (with license)	31/05/2011	223 -0000000-69	68,300.00	61,470.00	6,830.00
CCTV Surveillance 8- channel	31/07/2011	223 -0000000-73	124,600.00	112,140.00	12,460.00
Janam with Back-up card DPP-250 Printer	30/09/2011	223 -0000000-74	97,440.00	87,696.00	9,744.00
Upgrade to 16-Channel DVR CCTV	31/01/2012	223 -0000000-82	70,000.00	63,000.00	7,000.00
Computer Server License MS Windows 7	30/06/2012	223 -0000000- 100	65,620.00	59,058.00	6,562.00
DVR 16Channel 1TB HD with Indoor/Outdoor Cams	31/07/2013	223 -0000000- 118	54,100.00	48,690.00	5,410.00
PT20 Meter Reading Device w/ Printer(O. Aquino)	29/11/2013	223 -0000000- 123	83,333.33	75,000.00	8,333.33
PT20 Meter Reading Device w/ Printer(J. Samson)	29/11/2013	223 -0000000- 124	83,333.33	75,000.00	8,333.33
PT20 Meter Reading Device w/ Printer(E. Marcelo)	29/11/2013	223 -0000000- 125	83,333.33	75,000.00	8,333.33
PT20 Meter Reading Device w/ Printer(J. Garcia)	29/11/2013	223 -0000000- 126	83,333.33	75,000.00	8,333.33
PT20 Meter Reading Device w/ Printer(E. De Leon)	29/11/2013	223 -0000000- 127	83,333.33	75,000.00	8,333.33
PT20 Meter Reading Device w/ Printer(R. Bulaon)	29/11/2013	223 -0000000- 128	83,333.35	75,000.02	8,333.34
PWD Website Development	27/12/2013	223 -0000000- 129	65,000.00	58,500.00	6,500.00
One(1) unit Apple Macbook Pro (OGM)	31/03/2014	223 -0000000- 130	64,000.00	57,600.00	6,400.00
Upgrading Billing and Collection System	29/12/2016	223 -0000000- 187	315,000.00	283,500.00	31,500.00
One(1) unit Laptop - ROG GL552VW-DH74 15 inches for the Office of the General Manager under PO# 2017-01-015 dated Jan. 21, 2017. Octagon	26/01/2017	223 -0000000- 190	64,990.00	58,491.00	6,499.00

Three(3) units Laptop Intel Core i7-6700HQ Processor for Maint. & const. / Production under PO# 2017-01-016. Octagon	26/01/2017	223 -0000000-191 to 193	179,970.00	161,973.00	17,997.00
One(1) unit Macbook with Retina display 12 inches Rose Gold. PO# 2017-01-019. OGM at Power Mac Center	26/01/2017	223 -0000000-194	69,990.00	62,991.00	6,999.00
One(1) unit ASUS 17-Intel core i6700 processor - Admin. & Finance (DM Dumaguin) SI# 0531. ACDPM	09/02/2017	223 -0000000-204	55,000.00	49,500.00	5,500.00
One(1) unit ASUS Notebook Gold for Admin. Division under PO# 2017-03-062.	07/03/2017	223 -0000000-200	58,995.00	53,095.50	5,899.50
Three(3) units Desktop for maintenance and construction division as per PO#2017-01-013 SI# 0597.	10/03/2017	223 -0000000-201 to 203	195,000.00	175,500.00	19,500.00
One(1) unit HP Pavilion DT 510-P170D/ Blk - computer set with APC BX 1100L1- M.s. office and Student 2016. PO# 2017-02-043 OGM- Text blast. Octagon	14/03/2017	223 -0000000-214	71,990.00	64,791.00	7,199.00
One(1) unit HP Pavilion DT510-P170 D / Blk - computer set with APC BX 1100L1. MS office home and student 2016 under PO# 2017-02-53. OGM	14/03/2017	223 -0000000-215	71,990.00	64,791.00	7,199.00
One(1) unit Intel i7-7700 Process Computer package under Inv.# 0679 for Billing and Collection System Server SI# 0679. ACDPM	07/04/2017	223 -0000000-199	68,000.00	61,200.00	6,800.00
Two(2) sets of Visor with Printer for Meter Reading "Pitech" under Sales Invoice #2149 PO#2017-03-070 RR#	23/05/2017	223 -0000000-217 to 218	188,160.00	169,344.00	18,816.00



2017-04-120 dated April 19, 2017. Digital Data					
32 channel NVR with built-in memory bay with 4 pcs. 4TB Capacity as per PO# 2017-04-112 rr# 2017-05-146 DR# MM-0102 dated May 23,2017. Alchemist Multi-media.	31/05/2017	223 -0000000-220	376,436.00	338,792.40	37,643.60
Additional Cameras for Security Purposes of PLAWD Building (HIKVISION) under RR#2018-02-040/ PO#2018-01-029/ DR#0168/ SI#0034. alchemist	15/02/2018	JEV 18-02-0106	98,968.00	89,071.20	9,896.80
One (1) unit of i7 Laptop & Antivirus for OGM printing purposes. Under PO# 2018-02-039. PC Express	08/03/2018	223 -0000000-239	77,290.00	69,561.00	7,729.00
One (1) Unit i7 Laptop for Ronaldo Bulaon of Billing and Meter Reading Section, Commercial Division under PR# PLAWD 2018-01-034 CD 2018-01-004 / PO# 2018-03-063. Octagon	06/04/2018	223 -0000000-262	56,995.00	51,295.50	5,699.50
Commercial Division's HP SERVER Gen10 4110 1P 16G 86FF P408i-a 800W. Under RR#2018-06-176/ PR# PLAWD 2018-02-051 CD 2018-01-008/ PO#2018-0	19/06/2018	COM-223-024	330,850.00	297,765.00	33,085.00
Enhancement of billing and collection system for windows 8. (50% downpayment)	27/06/2018	JEV 18-06-0188	75,000.00	67,500.00	7,500.00
One (1) Unit of Acer Predator Laptop for Construction and Maintenance Division. Under PO#2018-06-	05/07/2018	223 -0000000-248	78,500.00	70,650.00	7,850.00

150 PR# PLAWD 2018-05-103 CMD 2018-05-027. s1 tech					
i7 Desktop Computer for Office of the General Manager Printing Purposes. Under PO#2018-07-152 PR# PLAWD 2018-05-102 OGM 2018-01-010. zagato	17/07/2018	223 -0000000-249 to 251	150,220.00	135,198.00	15,022.00
Computer Set with Printer for Cash Management Section. PO#2018-07-178 PR# PLAWD 2018-07-125 AF 2018-06-093. zagato	24/07/2018	223 -0000000-253	64,500.00	58,050.00	6,450.00
One ( 1) unit of i7 Laptop (Dell Inspiron 747 Gold) for Customer Service and BAC Use. Under PO#18-07-179 PR# PLAWD 18-07-127 CD 18-07-024. s1 tech	31/07/2018	223 -0000000-255	59,000.00	53,100.00	5,900.00
One (1) Unit of Computer set (Asus V241ICGT-BA006T Gold) and 1 Unit of Printer (L1300) for Accounting Section. Under PO#18-07-180 PR# PLAWD 18-07-124 CD 18-06-094. s1 tech	02/08/2018	223 -0000000-254	72,000.00	64,800.00	7,200.00
Complete Payment for the Enhancement of billing and collection system for windows 8.	22/08/2018	JEV 18-08-0148	75,000.00	67,500.00	7,500.00
Payment of 1 unit of Computer set (i7 - Desktop) for Engineering Division - Planning and Design Section. Under PO#2018-08-203 PR# CMD 2018-08-036. s1 tech	03/09/2018	223 -0000000-257	58,400.00	52,560.00	5,840.00
Three (3) units Lenovo Legion 5 Laptops for the staffs of Office of the General Manager	06/04/2021	223 -0000-024 to 026	188,985.00	93,547.58	95,437.43

under PO#21-03-030 RR#21-03-057 SI#1925 DR#23367. JRS Computer					
(Partial)6 sets Meter Reading Device (smartphone, thermal paper & printer, pouches, & MRS license cert.) under RR#21-09-144 PR#21- 05-016 DR#2021-0003 SI#1107 DV#21-09- 0036. Servicelink	10/09/2021	223 -0000000- 042 to 047	249,000.00	104,580.00	144,420.00
(Full) Installation & implementation of 6 sets Meter Reading Device (smartphone, thermal paper & printer, pouches, & MRS license cert.) under PR#21-05-016 DV#21-10-0062. Servicelin	26/10/2021	223 -0000000- 00263	249,000.00	97,110.00	151,890.00
System Unit and Eternal Hard Disk 2 Tera Uder P.O. No. 2017-08-108. SI#112830. zagato corp. (42770+34350+5080)	14/02/2018	JEV 21-11-0209	82,200.00	73,980.00	8,220.00
One (1) unit computer set for General Service Section under RR#22- 01-006 PO#21-12-156 SI#2254 DR#24904. DV#22-01-0053 JRS Computer	18/01/2022	223 -0000000- 088	69,950.00	25,182.00	44,768.00
One (1) unit laptop w/ license OS (Asus 14" notebook vivobook) - HR Section under RR#22-03-054 PO#22- 03-042 SI#3344 SO#5935. DV#22-03- 0122 S1 Technologies	25/03/2022	223 -000-0030	53,995.00	17,008.43	36,986.58
One (1) unit laptop (Asus Vivobook) to be used in the Office of the Gen. Manager under RR#22-04-071 PO#22-04-050	27/04/2022	223 -0000-095	53,995.00	16,198.50	37,796.50

SI#3638. DV#22-04-0083 S1 Technologies					
One (1) unit computer set of Accounting Section under RR#22-06-102a PO#22-05-069 SI#0561 DR#0599. DV#22-06-0055 Intellyx	10/06/2022	223 -000-098	58,000.00	16,530.00	41,470.00
Two (2) sets computer package of Commercial Division under RR#22-06-102b PO#22-05-082 SI#0562 DR#0600. DV#22-06-0056 Intellyx	10/06/2022	223 -000-050 to 051	116,000.00	33,060.00	82,940.00
One (1) unit of Computer Set (Core I5 11400 + MAG B560M Mortar WIFI) for Cash Management Section under RR#22-11-208 PO#22-09-165 SI#0625 DR#0713. DV#22-11-0049 INTELLYX	15/11/2022	223 -0000-105	60,000.00	12,600.00	47,400.00
One (1) computer set for Procurement Section corei5 11400 LENOVO G24-20 66CFGAC1PH under RR#22-11-217 PO#22-10-177 SI#5523. DV#22-11-0084 S1 Technologies	23/11/2022	223 -0000-106	59,000.00	11,505.00	47,495.00
One (1) set of Computer Packager for Human Resource Section delivered by S1 Technologies Inc. under RR# 23-01-017 PO#22-12-209 PR# ADM 22-11-043 SI#000624.	01/02/2023	223 -0000-109	59,500.00	9,817.50	49,682.50
One (1) unit Computer Ser with License for Human Resource Section under RR#2023-03-043 PR#ADM 2023-01-002 PO#2023-02-020 DR#0766 SI#0666.	09/03/2023	223 -0000223-113	83,000.00	12,450.00	70,550.00

DV#23-03-0041 Intellyx					
Two (2) units of Computer Set with License for Cash Mgt and Accounting Section under RR#2023-03-049 PR#Fin 2023-01-001 PO#2023-03-032 DR#0771 SI#0670. DV#23-03-0097 Intellyx	28/03/2023	223 -0000223-109 to 110	150,200.00	20,277.00	129,923.00
One (1) unit Computer Set with License for Accounting Server under RR#2023-08-108 PR#FIN 2023-03-009 PO#2023-05-072 DR#0828 SI#0717. [INTELLYX]	31/08/2023	223 -0000223-118	118,000.00	7,080.00	110,920.00
One (1) set of Computer Package i7 w/ OS and License for Commercial Division under RR#2023-10-142 PR# CD2023-09-017 PO#2023-10-109 DR#0004 SI#0610. DV#23-11-0030 MMBT (G-VAT)	30/11/2023	223-0000112-075	86,990.00	1,304.85	85,685.15
One (1) set of Computer Package i7 w/ OS and License for Commercial Division under RR#2023-10-142 PR# CD2023-09-017 PO#2023-10-109 DR#0004 SI#0610. DV#23-11-0030 MMBT (G-VAT)	30/11/2023	223-0000112-076	86,990.00	1,304.85	85,685.15
One (1) unit Laptop for Planning & Design Section - Engineering Division (R. Rivero & A. Mendoza) under RR#2023-12-153 PR#CM 2023-09-048 PO#2023-11-115 SI#8998. DV#23-12-0032 S1 TECH (G-VAT)	12/12/2023	223-0000223-040	60,000.00	900.00	59,100.00

**IT Equipment and Software**

6,627,739.00

4,823,076.30

1,804,662.70

Article	Date of Acquisition	Property No.	Unit Value	Total Accumulated Depreciation as of CY 2023	Net Book Value as of CY 2023
One(1) Tampering Rammer(Compactor) HONDA	31/07/2016	230 -0000000-18	52,000.00	34,710.00	17,290.00
One (1) unit of Portable Meter Tester for Calibrating Machine for Commercial Division. Under RR#2018-10-285 PR# PLAWD 2018-08-140 CD 2018-08-030 PO#2018-10-217. envirokonsult	05/11/2018	AF-240-017	150,085.00	69,789.53	80,295.48

**Construction and Heavy Equipment**

202,085.00

104,499.53

97,585.48

Article	Date of Acquisition	Property No.	Unit Value	Total Accumulated Depreciation as of CY 2023	Net Book Value as of CY 2023
One(1) unit Digital Water analysis Test Kit (colorimeter) SI#2433 PO# 2017-02-044.	09/05/2017	240 -0000000-198	89,500.00	80,550.00	8,950.00
Supply and Installation of VFD Control Panel Board for Tabang Pump Station. Under PR#2019-01-005/ENG PRO 2019-004/PO#2019-01-044 . DV#19-03-0052 aqua	14/03/2019	JEV 19-03-0083	279,000.00	242,730.00	36,270.00
Supply and Installation of VFD Control Panel Board for Sipat Pump Station. Under PR#2019-01-003/ENG PRO 2019-003/PO#2019-01-015. DV#19-03-0053 aqua	14/03/2019	JEV 19-03-0084	279,000.00	242,730.00	36,270.00

Jack Hammer (Demolition Hammer0 - 1st & 2nd Qtr. 2020. Under RR#2020-09- 106 PO#2020-09-080 SI#1410645840. DV#20-10-0015. hilti philippines	08/10/2020	JEV 20-10-0034	155,650.00	91,055.25	64,594.75
Chlorine Tri-Meter for Chlorine Test Kit - 4th Qtr. 2020 (Brand: LAMOTTE TC3000we). PO#2020-12-123. Dakila Trading.	29/01/2021	240 -0000000- 002	101,100.00	53,077.50	48,022.50
One (1) Portable Generator Set for installation of new meter connections and pipe laying projects under PO#21-02-020 RR#21-04-062 SI#73020 DR#QC21- 2181. Karl-Gelson	22/04/2021	240 -0000000- 00157	58,080.00	27,007.20	31,072.80
Two (2) sets Jack Hammer 1st Qtr. 2021 for concrete breaking, new meter installation & repair of water main pipeline under PO#21- 04-045 RR#21-05-085 SI#1410671651 DV#21-06-0005 Hilti	03/06/2021	240 -025 -1 and 2	234,449.24	109,018.90	125,430.34
Two (2) sets big Chipping Gun 1st Qtr. 2021 for concrete breaking, new meter installation & repair of water main pipeline under PO#21-04-046 RR#21-05-086 SI#1410671650 DV#21-06-0006 Hilti	03/06/2021	240 -026 -1 and 2	138,182.40	64,254.82	73,927.58
Pull Out, Repair and Installation in Plaridel Heights Pump Station (Labor) under PR#2021-01-006 SI#0533 DV#21-06- 0030 Hydro-Pro	07/06/2021	240 -0210100-6	82,630.00	38,422.95	44,207.05
Three (3) sets of data logger & accessories (supply, delivery,	08/11/2021	240 -250 -007 to 009	427,590.00	166,760.10	260,829.90

installation, testing & commissioning) for data monitoring of pump stations under RR#21-10-165 PO#21-07-080 SI#0215 DR#000323 D					
Calibration of water production meters under Contract dated Nov. 4, 2021, BOD Reso. No. 12 s.2021, PR#21-08-044. [Maynilad]	29/12/2021	240 -0000000-00225	94,233.14	33,923.93	60,309.21
One (1) unit Jack Hammer 100 watts for New Connection under RR#2023-03-061 PR#CM 2023-03-026 PO#2023-03-043 DR#0004 SI#0004. DV#23-04-0038 AMITEQ	11/04/2023	240-0000240-213	107,000.00	14,445.00	92,555.00
Four (4) units Supply, Deliver, Install, Testing and Commissioning of Data Logger for Parulan, Bintog, Plaridel Heights and Sitio Santiago Pump Stations under RR#2023-04-074 SI#2313 DR	31/05/2023	240-0000250-012 to 015	490,080.00	51,458.40	438,621.60
One (1) lot Fabrication of Improvised Water Tank (GAD Project) under PR#CM 2023-04-036 & contract dated May 23, 2023. [UBBA ELECTROMECHANICAL]	31/07/2023	240-0000240-016	291,200.00	21,840.00	269,360.00
One (1) DEWALT DEMOLITION HAMMER	16/08/2018	240 -0000000-201	120,000.00	108,000.00	12,000.00

**Other Machinery and Equipment**

2,947,694.78 1,345,274.04 1,602,420.74

Article	Date of Acquisition	Property No.	Unit Value	Total Accumulated	Net Book Value as of CY 2023
---------	---------------------	--------------	------------	-------------------	------------------------------



				<b>Depreciation as of CY 2023</b>	
Electro-mechanical Equipment	31/05/1995	250 -250-4 -03	940,000.00	846,000.00	94,000.00
Powerline Installation	31/05/1995	250 -250-4 -04	96,440.00	86,796.00	9,644.00
Powerline / Misc. Works	31/05/1995	250 -250-4 -05	135,711.27	122,140.14	13,571.13
Vertical Turbine Motor	15/09/1997	250 -250-4 -06	121,760.00	109,584.00	12,176.00
Column Pipe	13/05/1998	250 -250-4 -08	94,500.00	85,050.00	9,450.00
Discharge Line	31/05/1998	250 -250-4 -11	266,750.00	240,075.00	26,675.00
Motor Control	31/05/1998	250 -250-4 -12	144,000.00	129,600.00	14,400.00
Submersible Pump PS#3 (repair)	13/09/2000	250 -250-4 -15	50,500.00	45,450.00	5,050.00
Electro-mechanical Equip. PS#4	05/10/2001	250 -250-4 -16	610,450.00	549,405.00	61,045.00
100HP Vertical Motors -PS#2 - new spare	04/03/2003	250 -250-4 -18	414,000.00	372,600.00	41,400.00
PS#2 Stainless Steel Line shaft	07/05/2003	250 -250-4 -19	53,200.00	47,880.00	5,320.00
Telemecanique Soft Starter PS#4 and Elect'l	30/10/2004	250 -250-4 -25	123,169.00	110,852.10	12,316.90
Submersible Pump-PS#3 Berkeley	01/06/2005	250 -250-4 -29	53,550.00	48,195.00	5,355.00
Electro-mechanical Rueda PS#5 to Culianin PS	01/12/2005	250 -250-4 -30	679,445.00	611,500.50	67,944.50
One(1) unit Pleuger Submersible Pump & Motor PS#4	31/12/2007	250 -250-4 -31	300,000.00	270,000.00	30,000.00
Electromechanical Equipment-Culianin PS	31/12/2008	250 -250-4 -32	288,572.00	259,714.80	28,857.20
Submersible Pump(Beta Flow) & Motor	30/01/2009	250 -250-4 -33	156,750.00	141,075.00	15,675.00
Submersible Pump Series 400-2 Culianin PS	30/10/2010	250 -250-4 -34	58,758.00	52,882.20	5,875.80
Bintog PS#3 Discharge Line	31/07/2011	250 -250-4 -35	94,650.00	85,185.00	9,465.00
Submersible Pump Parulan PS#7	31/10/2011	250 -250-4 -36	308,830.00	277,947.00	30,883.00
One(1)unit FRANKLIN Submersible Motor PS#6 Culianin	31/10/2012	250 -250-4 -37	79,898.00	71,908.20	7,989.80
Submersible Pump PS#7 Parulan PS	30/11/2012	250 -250-4 -38	98,000.00	88,200.00	9,800.00
6pcs B.I. Column Pipe 6" x 20ft S-40 w/ Coupling 6	31/12/2012	250 -250-4 -39	65,670.00	59,103.00	6,567.00

13pcs B.I.Column Pipe 8" dia x 10ft PS#2 Tabang	31/12/2012	250 -250-4 -40	240,500.00	216,450.00	24,050.00
CAPRARI Submersible Pump&Motor(Franklin ) - Bulihan PS	28/12/2013	250 -250-4 -41	290,000.00	261,000.00	29,000.00
FUJI Autotransformer/Pane l Board - Bulihan PS	28/12/2013	250 -250-4 -42	143,750.00	129,375.00	14,375.00
Discharge Line Bulihan PS	28/02/2014	250 -250-4 -43	170,000.00	150,450.00	19,550.00
12pcs 6" x 6meters B.I. Pipe (Plaridel Hts PS)	30/04/2014	250 -250-4 -44	139,947.60	121,754.41	18,193.19
11pcs 6" x 6meters B.I. Pipe (Bulihan PS)	30/06/2014	250 -250-4 -45	111,265.00	95,131.58	16,133.43
Caprari Submersible Pump/Motor Plaridel Hts	29/12/2014	250 -250-4 -47	398,500.00	322,785.00	75,715.00
Fuji Autotransformer Plaridel Hts	29/12/2014	250 -250-4 -48	158,750.00	128,587.50	30,162.50
Riser Pipe Discharge Line Plaridel Hts	30/12/2014	250 -250-4 -49	195,000.00	157,950.00	37,050.00
One(1) unit Submersible Motor 30hp 230V Bintog PS	31/01/2015	250 -250-4 -51	97,000.00	77,842.50	19,157.50
One(1) unit Submersible Motor 30hp 230V Parulan PS	31/05/2015	250 -250-4 -52	97,000.00	74,932.50	22,067.50
R/M Submersible P/M for Bintog Pump Station	31/08/2015	250 -250-4 -54	53,810.00	40,357.50	13,452.50
R/M of Vertical Turbine P/M for Tabang Pump Station	31/08/2015	250 -250-4 -55	99,270.00	74,452.50	24,817.50
Pull-out and Installation of P/M Culianin Pump Station	31/08/2015	250 -250-4 -56	59,440.00	44,580.00	14,860.00
Pull-out and Installation of P/M Sipat Pump Station	31/08/2015	250 -250-4 -57	107,991.00	80,993.25	26,997.75
Pull-out and Installation of P/M Parulan Pump Station	31/08/2015	250 -250-4 -58	65,370.00	49,027.50	16,342.50
Pull-out and Installation of P/M Bintog Pump Station	31/08/2015	250 -250-4 -59	64,770.00	48,577.50	16,192.50
Pull-out and Installation of P/M Tabang Pump Station	31/08/2015	250 -250-4 -60	114,665.00	85,998.75	28,666.25
Franklin Submersible Motor 30HP, 230V, 3Ph	31/12/2015	250 -250-4 -62	98,900.00	71,208.00	27,692.00

Dynaflor Submersible Pump	31/12/2015	250 -250-4 -63	92,000.00	66,240.00	25,760.00
Franklin Submersible Motor 25HP,230V	30/04/2016	250 -250-4 -64	90,601.00	62,514.69	28,086.31
One(1) unit Dynaflo Submersible Pump for Plaridel Hts. PS	31/08/2016	250 -250-4 -66	105,192.00	69,426.72	35,765.28
One(1) unit Franklin Submersible Motor 30HP for Plaridel Hts. PS	31/08/2016	250 -250-4 -67	98,900.00	65,274.00	33,626.00
Spare 25 HP Submersible Motor under RR# 2018-02-037/ PO#2018-02-020 / DR# 0872 / SI#1869. all systems	12/03/2018	250 -250-4 -71	99,954.50	45,729.18	54,225.32
One (1) unit of DYNAFLO' (USA) DP77-4B, rated to deliver 390 gpm x 182 ft. TDH for Spare Submersible Pump for Sitio Santiago PS. Under RR#2018-11-294 PR# PLAWD 18-10-154 ENG-PRO 18-01-046 PO#18-10-228 w/ 1	16/11/2018	JEV 18-11-0110	93,420.00	42,739.65	50,680.35
One (1) unit of Supply and Delivery 50HP Submersible Motor (Spare) PO#2019-01-018 PR#ENG PRO 2019-006. DV#19-02-0041	18/02/2019	JEV 19-02-0072	183,600.00	79,866.00	103,734.00
Supply and Delivery of 30hp Submersible Motor for sitio Santiago Pump Station. Under PO#2019-01-017 PR# PLAWD 2019-01-007 ENG PRO 2019-007.	28/02/2019	JEV 19-02-0116	123,974.00	53,928.69	70,045.31
One (1) unit Dynaflo for Spare submersible Pump for Bintog Pump Station. Under RR#2019-03-053 PO#2019-03-033 PR# PLAWD 2019-02-018 ENG PRO 2019-012.	01/04/2019	JEV 19-04-0007	97,500.00	41,681.25	55,818.75

DV#19-04-0004. aii systems					
One(1) set Variable Frequency Drive for 30hp 220 volts 3 phase 60hz -control Panel at Bulihan Pump Station DR# 3555 at SI# 479. RPC Controls	11/04/2017	250 -250-4 -70	140,000.00	85,050.00	54,950.00
Reclassification of completed project - Pump Pull-out and Installation (Preventive Maintenance).	29/12/2017	257 -0000000-141	720,102.20	388,855.19	331,247.01
To reclass entry for reconditioning of Sipat Pump Station in 2020 initially recorded in Other Machineries and Equipment.	30/07/2021	250 -250-4 -78	332,212.00	72,256.11	259,955.89
One (1) unit submersible motor for the replacement of submersible motor at Tabang Pump Station under RR#21-08-138 PO#21-08-094 DR#9978 SI#10240 DV#21-09-0029. Gotesco	08/09/2021	250 -250-4 -002	185,000.00	37,462.50	147,537.50
One (1) unit submersible pump for the replacement of submersible pump at Tabang Pump Station under RR#21-08-139 PO#21-08-095 DR#9979 SI#10241 DV#21-09-0030. Gotesco	08/09/2021	250 -250-4 -003	142,000.00	28,755.00	113,245.00
Supply, installation testing, and commissioning of water level control system in Plaridel Heights Pump Station under SI#5670, Contract dated May 11, 2022 & BOD Reso. No. 5 s.2022. [A/P: Flownetrics]	31/05/2022	250 -250-4 -81	150,000.00	21,375.00	128,625.00

Payment for one (1) unit submersible motor w/ accessories as replacement motor of Parulan Pump Station under RR#22-05-091 PO#22-05-063 SI#4609 DR#22-147. DV#22-06-0044 Aqua Haus	09/06/2022	250 -250-4 -82	112,199.00	15,988.36	96,210.64
Payment for 1 unit submersible pump with accessories to be used as replacement for Bintog Pumping Station under RR#22-06-104 PO#22-05-071 SI#11271 DR#11713. DV#22-06-0081 Gotesco	17/06/2022	250 -250-4 -84	98,000.00	13,230.00	84,770.00
Payment for 1 unit submersible pump with accessories to be used as replacement for Sipat Pumping Station under RR#22-06-106 PO#22-05-074 SI#11269 DR#11711. DV#22-06-0082 Gotesco	17/06/2022	250 -250-4 -85	110,000.00	14,850.00	95,150.00
Payment for 1 unit submersible motor with accessories to be used as replacement for Sipat Pumping Station under RR#22-06-103 PO#22-05-073 SI#11268 DR#11710. DV#22-06-0083 Gotesco	17/06/2022	250 -250-4 -83	230,000.00	31,050.00	198,950.00
Payment for 1 unit submersible pump with accessories to be used as replacement for Parulan Pumping Station under RR#22-06-119 PO#22-05-072 SI#11367 DR#11813. DV#22-06-0094 Gotesco	23/06/2022	250 -250-4 -86	86,000.00	11,610.00	74,390.00

One (1) unit submersible motor with accessories to be used as replacement for Tabang Pumping Station under RR#22-06-120 PO#22-06-095 SI#11366 DR#11812. DV#22-06-0099 Gotesco	23/06/2022	250 -250-4 -87	230,000.00	31,050.00	198,950.00
One (1) unit of submersible pump with accessories for Bintog Pump Station Spare CRI PUMP/ S8S-390-04-6 under RR#22-11-218 PO#22-11-190 DR#3387 SI# 4524. DV# 22-11-82 HOUSTON	23/11/2022	250 -250-4 -88	123,000.00	11,992.50	111,007.50
One (1) lot supply and installation(Emergency Replacement) of Variable Frequency Drive(VFD) in Tabang P.S under RR#2023-04-064 PO#2023-03-039 SI#004775. DV#23-04-0028 Aqua Haus	05/04/2023	250 -250-4 -89	124,330.00	8,392.28	115,937.73

**250-4 OPPE-  
Machinery Pumping  
Equipment**

11,708,516.57 8,241,913.54 3,466,603.03

Article	Date of Acquisition	Property No.	Unit Value	Total Accumulated Depreciation as of CY 2023	Net Book Value as of CY 2023
Perkins Diesel Generator 75kVA PS#3	30/06/2001	250 -250-5 -04	519,220.00	467,298.00	51,922.00
Gen-set Housing PS#3	31/12/2001	250 -250-5 -06	68,886.50	61,997.85	6,888.65
75KV Generator Set F-G Wilson PS#4	26/11/2004	250 -250-5 -07	750,000.00	675,000.00	75,000.00
One(1) unit Generator Set 165KVA-PS#2	31/12/2010	250 -250-5 -09	1,285,000.00	1,156,500.00	128,500.00
Payment for the emergency pull-out of Bulihan PS Pump and Motor under Contract dated May 31, 2022,	10/06/2022	250 -250-4 -00100	62,000.00	8,835.00	53,165.00

2022-IR-ENGPPO-02, BOD Reso. 39 s.2022, SI#0683, DR#4339. DV#22-06-0058 Hydro- Pro					
Supply and Installation of Generator Set for Plaridel Heights Pump Station. Under PO#2019-09-100. light industrial	27/12/2019	250 -250-4 -74	805,500.00	289,980.00	515,520.00
Pull-out & installation of pump & motor at Bulihan PS, and reconditioning of submersible pump end & submersible motor. Ref: SI#0606 DR#4300 BOD Res. #12 s2021 & Contract dated Ap	05/11/2021	240 -0000000- 00214	89,105.00	17,375.48	71,729.53
Pull-out, repair & installation of submersible motor at Tabang PS under SI#0610, BOD Reso. No. 12 s2021, PR#21- 08-040 & Contract dated Oct. 20, 2021. DV#21-11-0066	19/11/2021	240 -0000000- 00215	80,500.00	15,093.75	65,406.25
To reclass entry for reconditioning of Culianin Pump Station in 2020 initially recorded in Other Machineries and Equipment.	30/07/2021	250 -250-4 -76	195,070.00	42,427.73	152,642.28
To reclass entry for reconditioning of Bintog Pump Station in 2020 initially recorded in Repairs and Maintenance - Waterways.	30/07/2021	250 -250-4 -77	230,900.00	50,220.75	180,679.25
Reconditioning of Sitio Santiago Pump Station (pull-out & installation of pump & motor, repair of sub. pump end & recon. of sub. motor) under Service Invoice #0645. DV#22- 02-0053	16/02/2022	250 -250-4 -79	87,500.00	14,437.50	73,062.50

Supply and Installation of Automatic Transfer Switch	31/12/2022	250 -250-5 -11	150,000.00	13,500.00	136,500.00

**250-5 OPPE-Other Machinery Pumping Equipment**

4,323,681.50      2,812,666.05      1,511,015.45

Article	Date of Acquisition	Property No.	Unit Value	Total Accumulated Depreciation as of CY 2023	Net Book Value as of CY 2023
Gas Ejector	31/08/2009	250 -250-6 -10	58,320.00	52,488.00	5,832.00
Gas Chlorinator PS#4 Sipat PS	30/11/2012	250 -250-6 -19	147,898.00	133,108.20	14,789.80
Hydro Gas Chlorinator	28/12/2012	250 -250-6 -21	95,000.00	85,500.00	9,500.00
Eco-Chlor Gas Chlorinator Model EC100 Cullanin PS6	30/07/2013	250 -250-6 -22	69,000.00	62,100.00	6,900.00
One(1) unit Gas Chlorinator Assembly Bulihan PS	31/01/2014	250 -250-6 -24	158,400.00	141,372.00	17,028.00
Gaschlorinator Plaridel Hts	29/12/2014	250 -250-6 -26	156,898.00	127,087.38	29,810.62
Gas Chlorinator with regulator/ejector (SPARE)	29/12/2014	250 -250-6 -27	95,898.00	77,677.38	18,220.62
Gas Chlorinator Regulator and Ejector	31/01/2016	250 -250-6 -28	96,898.00	69,039.83	27,858.18
Gas Chlorinator Regulator and Ejector	29/12/2016	250 -250-6 -30	95,449.00	60,132.87	35,316.13
Gas Chlorinator Regulator and Ejector	29/12/2016	250 -250-6 -31	95,449.00	60,132.87	35,316.13
Two(2) sets of chlorine regulator and ejector with accessories under SI# 2059 / DR# 1915. Pump Asia	09/10/2017	250 -250-6 -33 and 34	190,898.00	107,380.13	83,517.88
Chlorine Regulator and Ejector with accessories 2 sets x P97,449 = P194,898 and Lead Gasket (additional) 100 pcs. x P50 = P5,000 for Pump Station under RR#2018-02-048/ PO#2018-02-034/ DR#1968/ SI#211	16/03/2018	JEV 18-03-0130	194,898.00	100,859.72	94,038.29



One (1) set spare chlorine regulator and ejector with accessories under RR#21-09-143 PO#21-06-078 SI#2369 DR#2209 DV#21-09-0031. Pump Asia	08/09/2021	250 -250-6 -009	128,898.00	27,068.58	101,829.42
Two (2) sets Chlorine Regulator, Ejector & Additional 100pcs. Lead Gasket. Under RR#2019-07-079 PO#2019-06-062 SI#2224. DV#19-07-0051. pump asia	05/07/2019	250 -250-6 -37	202,898.00	82,173.69	120,724.31
Two (2) sets chlorine regulator & ejector w/ accessories under RR#22-06-097 PO#22-03-046 SI#2407 DR#2257. DV#22-06-0036 Pump Asia	07/06/2022	250 -250-6 -41 and 42	246,898.00	31,479.50	215,418.51

**250-6 OPPE-Water Treatment**

2,033,700.00      1,217,600.13      816,099.87

Summary of Equipments:	Unit Value	Total Accumulated Depreciation as of CY 2023	Net Book Value as of CY 2023
Office Equipment	1,545,128.50	1,234,131.53	310,996.97
IT Equipment and Software	6,627,739.00	4,823,076.30	1,804,662.70
Construction and Heavy Equipment	202,085.00	104,499.53	97,585.48
Other Machinery and Equipment	2,947,694.78	1,345,274.04	1,602,420.74
250-4 OPPE-Machinery Pumping Equipment	11,708,516.57	8,241,913.54	3,466,603.03
250-5 OPPE-Other Machinery Pumping Equipment	4,323,681.50	2,812,666.05	1,511,015.45
250-6 OPPE-Water Treatment	2,033,700.00	1,217,600.13	816,099.87
	<b>29,388,545.35</b>	<b>19,779,161.12</b>	<b>9,609,384.23</b>

## ANNEX I - SUMMARY OF BACTERIOLOGICAL ANALYSIS 2023

Sample Description				Date and Time						RESULTS			
Sample ID	RSP Code	Sampling Location	Source	Collection		Received		Examined		Total Coliform	Thermotolerant Coliform	HPC	Remarks
231-88693-3	WS-034	Plaridel Municipal Jail (BJMP) Poblacion, Plaridel	Deep Well	06-Jan-23	9:06 am	06-Jan-23	3:42 pm	06-Jan-23	3:51 pm	<1	<1	6	PASSED
231-88694-3	WS-033	Banga Elementary School, Garcia St., Banga II, Plaridel	Deep Well	06-Jan-23	9:17 am	06-Jan-23	3:42 pm	06-Jan-23	3:51 pm	<1	<1	2	PASSED
231-88695-3	PS-08	Bintog Pump Station	Deep Well	06-Jan-23	10:15 am	06-Jan-23	3:42 pm	06-Jan-23	3:51 pm	<1	<1	4	PASSED
231-88696-3	PS-03	Parulan Pump Station	Deep Well	06-Jan-23	9:30 am	06-Jan-23	3:42 pm	06-Jan-23	3:51 pm	<1	<1	4	PASSED
231-88697-3	WS-017	Agnaya Barangay Hall, Agnaya, Plaridel	Deep Well	06-Jan-23	11:23 am	06-Jan-23	3:42 pm	06-Jan-23	3:51 pm	<1	<1	10	PASSED
231-88698-3	WS-047	Parulan Barangay Hall, Parulan, Plaridel	Deep Well	06-Jan-23	9:44 am	06-Jan-23	3:42 pm	06-Jan-23	3:51 pm	<1	<1	16	PASSED
231-88699-3	WS-063	Barangay Hall Bintog, Plaridel	Deep Well	06-Jan-23	9:58 am	06-Jan-23	3:42 pm	06-Jan-23	3:51 pm	<1	<1	12	PASSED
231-88700-3	WS-059	Lumina Covered Court, Lumina Homes Plaridel, Culianin, Plaridel	Deep Well	06-Jan-23	10:26 am	06-Jan-23	3:42 pm	06-Jan-23	3:51 pm	<1	<1	10	PASSED
231-88701-3	WS-053	San Jose Barangay Hall, San Jose, Plaridel	Deep Well	06-Jan-23	10:35 am	06-Jan-23	3:42 pm	06-Jan-23	3:51 pm	<1	<1	8	PASSED
231-88702-3	WS-074	Banga I Barangay Hall, Banga I, Plaridel	Deep Well	06-Jan-23	11:13 am	06-Jan-23	3:42 pm	06-Jan-23	3:51 pm	<1	<1	16	PASSED
231-88703-3	WS-002	National Road, Rueda Barangay Hall, Rueda, Plaridel	Deep Well	06-Jan-23	11:48 am	06-Jan-23	3:42 pm	06-Jan-23	3:51 pm	<1	<1	2	PASSED

231-88704-3	WS-005	Dampol National High School, Dampol, Plaridel	Deep Well	06-Jan-23	11:37 am	06-Jan-23	3:42 pm	06-Jan-23	3:51 pm	<1	<1	4	PASSED
231-88705-3	WS-067	St. Agatha Homes 2 Club House, Bulihan, Plaridel	Deep Well	06-Jan-23	10:52 am	06-Jan-23	3:42 pm	06-Jan-23	3:51 pm	<1	<1	4	PASSED
231-89142-3	WS-060	RHU Plaridel	Deep Well	25-Jan-23	12:48 pm	25-Jan-23	3:00 pm	25-Jan-23	3:09 pm	<1	<1	4	PASSED
231-89143-3	WS-010	Sipat Barangay Hall, Sipat, Plaridel	Deep Well	25-Jan-23	12:35 pm	25-Jan-23	3:00 pm	25-Jan-23	3:09 pm	<1	<1	18	PASSED
231-89144-3	WS-022	Sto. Nino Barangay Hall, Sto. Nino, Plaridel	Deep Well	25-Jan-23	11:54 am	25-Jan-23	3:00 pm	25-Jan-23	3:09 pm	<1	<1	22	PASSED
231-89145-3	WS-006	Sangguniang Barangay ng Lagundi, Lagundi, Plaridel	Deep Well	25-Jan-23	12:12 pm	25-Jan-23	3:00 pm	25-Jan-23	3:09 pm	<1	<1	14	PASSED
231-89146-3	WS-036	Lalangan Barangay Hall, Lalangan, Plaridel	Deep Well	25-Jan-23	11:44 am	25-Jan-23	3:00 pm	25-Jan-23	3:09 pm	<1	<1	4	PASSED
231-89147-3	WS-038	Tabang Elementary School, Tabang, Plaridel	Deep Well	25-Jan-23	11:13 am	25-Jan-23	3:00 pm	25-Jan-23	3:09 pm	<1	<1	4	PASSED
231-89148-3	WS-071	Sta. Ines Barangay Hall, Sta. Ines, Plaridel	Deep Well	25-Jan-23	10:53 am	25-Jan-23	3:00 pm	25-Jan-23	3:09 pm	<1	<1		PASSED
231-89149-3	PS-04	Sipat Pump Station	Deep Well	25-Jan-23	12:22 pm	25-Jan-23	3:00 pm	25-Jan-23	3:09 pm	<1	<1		PASSED
231-89150-3	PS-09	Plaridel Heights Pump Station	Deep Well	25-Jan-23	11:32 am	25-Jan-23	3:00 pm	25-Jan-23	3:09 pm	<1	<1		PASSED
231-89151-3	PS-10	Sitio Santiago Pump Station	Deep Well	25-Jan-23	1:00 pm	25-Jan-23	3:00 pm	25-Jan-23	3:09 pm	<1	<1		PASSED
231-89152-3	PS-02	Tabang Pump Station	Deep Well	25-Jan-23	11:24 am	25-Jan-23	3:00 pm	25-Jan-23	3:09 pm	<1	<1		PASSED

232-89189-3	WS-034	Plaridel Municipal Jail (BJMP) Poblacion, Plaridel	Deep Well	02-Feb-23	9:51 am	02-Feb-23	3:50 pm	02-Feb-23	3:59 am	<1	<1	24	PASSED
232-89190-3	WS-033	Banga Elementary School, Garcia St., Banga II, Plaridel	Deep Well	02-Feb-23	10:02 am	02-Feb-23	3:50 pm	02-Feb-23	3:59 am	<1	<1	8	PASSED
232-89191-3	PS-08	Bintog Pump Station	Deep Well	02-Feb-23	11:22 am	02-Feb-23	3:50 pm	02-Feb-23	3:59 am	<1	<1	10	PASSED
232-89192-3	PS-03	Parulan Pump Station	Deep Well	02-Feb-23	11:32 am	02-Feb-23	3:50 pm	02-Feb-23	3:59 am	<1	<1	10	PASSED
232-89193-3	WS-017	Agnaya Barangay Hall, Agnaya, Plaridel	Deep Well	02-Feb-23	11:55 am	02-Feb-23	3:50 pm	02-Feb-23	3:59 am	<1	<1	4	PASSED
232-89194-3	WS-047	Parulan Barangay Hall, Parulan, Plaridel	Deep Well	02-Feb-23	10:13 am	02-Feb-23	3:50 pm	02-Feb-23	3:59 am	<1	<1	8	PASSED
232-89195-3	WS-063	Barangay Hall Bintog, Plaridel	Deep Well	02-Feb-23	10:24 am	02-Feb-23	3:50 pm	02-Feb-23	3:59 am	<1	<1	6	PASSED
232-89196-3	WS-059	Lumina Covered Court, Lumina Homes Plaridel, Culianin, Plaridel	Deep Well	02-Feb-23	10:39 am	02-Feb-23	3:50 pm	02-Feb-23	3:59 am	<1	<1	12	PASSED
232-89197-3	WS-053	San Jose Barangay Hall, San Jose, Plaridel	Deep Well	02-Feb-23	10:52 am	02-Feb-23	3:50 pm	02-Feb-23	3:59 am	<1	<1	10	PASSED
232-89198-3	WS-074	Banga I Barangay Hall, Banga I, Plaridel	Deep Well	02-Feb-23	11:46 am	02-Feb-23	3:50 pm	02-Feb-23	3:59 am	<1	<1	4	PASSED
232-89198-3	WS-002	National Road, Rueda Barangay Hall, Rueda, Plaridel	Deep Well	02-Feb-23	12:28 pm	02-Feb-23	3:50 pm	02-Feb-23	3:59 am	<1	<1	6	PASSED
232-89198-3	WS-005	Dampol National High School, Dampol, Plaridel	Deep Well	02-Feb-23	12:15 pm	02-Feb-23	3:50 pm	02-Feb-23	3:59 am	<1	<1	2	PASSED

232-89198-3	WS-067	St. Agatha Homes 2 Club House, Bulihan, Plaridel	Deep Well	02-Feb-23	11:05 am	02-Feb-23	3:50 pm	02-Feb-23	3:59 am	<1	<1	2	PASSED
232-89452-3	WS-060	RHU Plaridel	Deep Well	09-Feb-23	11:32 am	09-Feb-23	3:02 am	09-Feb-23	3:11 am	<1	<1	8	PASSED
232-89453-3	WS-010	Sipat Barangay Hall, Sipat, Plaridel	Deep Well	09-Feb-23	11:21 am	09-Feb-23	3:02 am	09-Feb-23	3:11 am	<1	<1	10	PASSED
232-89454-3	WS-022	Sto. Nino Barangay Hall, Sto. Nino, Plaridel	Deep Well	09-Feb-23	10:43 am	09-Feb-23	3:02 am	09-Feb-23	3:11 am	<1	<1	20	PASSED
232-89455-3	WS-006	Sangguniang Barangay ng Lagundi, Lagundi, Plaridel	Deep Well	09-Feb-23	11:00 am	09-Feb-23	3:02 am	09-Feb-23	3:11 am	<1	<1	22	PASSED
232-89456-3	WS-036	Lalangan Barangay Hall, Lalangan, Plaridel	Deep Well	09-Feb-23	10:33 am	09-Feb-23	3:02 am	09-Feb-23	3:11 am	<1	<1	28	PASSED
232-89457-3	WS-038	Tabang Elementary School, Tabang, Plaridel	Deep Well	09-Feb-23	10:06 am	09-Feb-23	3:02 am	09-Feb-23	3:11 am	<1	<1	14	PASSED
232-89458-3	WS-071	Sta. Ines Barangay Hall, Sta. Ines, Plaridel	Deep Well	09-Feb-23	11:40 am	09-Feb-23	3:02 am	09-Feb-23	3:11 am	<1	<1	26	PASSED
232-89459-3	PS-04	Sipat Pump Station	Deep Well	09-Feb-23	11:12 am	09-Feb-23	3:02 am	09-Feb-23	3:11 am	<1	<1	8	PASSED
232-89460-3	PS-09	Plaridel Heights Pump Station	Deep Well	09-Feb-23	10:19 am	09-Feb-23	3:02 am	09-Feb-23	3:11 am	<1	<1	8	PASSED
232-89461-3	PS-10	Sitio Santiago Pump Station	Deep Well	09-Feb-23	9:49 am	09-Feb-23	3:02 am	09-Feb-23	3:11 am	<1	<1	10	PASSED
232-89462-3	PS-02	Tabang Pump Station	Deep Well	09-Feb-23	10:15 am	09-Feb-23	3:02 am	09-Feb-23	3:11 am	<1	<1	6	PASSED
232-89463-3	PS-08	Bulihan Pump Station	Deep Well	09-Feb-23	9:25 am	09-Feb-23	3:02 am	09-Feb-23	3:11 am	<1	<1	4	PASSED
233-89839-3	WS-034	Plaridel Municipal Jail (BJMP) Poblacion, Plaridel	Deep Well	03-Mar-23	9:15 am	03-Mar-23	3:24 pm	03-Mar-23	3:33 pm	<1	<1	4	PASSED

233-89840-3	WS-033	Banga Elementary School, Garcia St., Banga II, Plaridel	Deep Well	03-Mar-23	9:25 am	03-Mar-23	3:24 pm	03-Mar-23	3:33 pm	<1	<1	6	PASSED
233-89841-3	PS-03	Bintog Pump Station	Deep Well	03-Mar-23	10:55 am	03-Mar-23	3:24 pm	03-Mar-23	3:33 pm	<1	<1	8	PASSED
233-89842-3	PS-07	Parulan Pump Station	Deep Well	03-Mar-23	11:11 am	03-Mar-23	3:24 pm	03-Mar-23	3:33 pm	<1	<1	12	PASSED
233-89843-3	WS-017	Agnaya Barangay Hall, Agnaya, Plaridel	Deep Well	03-Mar-23	11:45 am	03-Mar-23	3:24 pm	03-Mar-23	3:33 pm	<1	<1	10	PASSED
233-89844-3	WS-047	Parulan Barangay Hall, Parulan, Plaridel	Deep Well	03-Mar-23	9:34 am	03-Mar-23	3:24 pm	03-Mar-23	3:33 pm	<1	<1	4	PASSED
233-89845-3	WS-063	Barangay Hall Bintog, Plaridel	Deep Well	03-Mar-23	9:46 am	03-Mar-23	3:24 pm	03-Mar-23	3:33 pm	<1	<1	6	PASSED
233-89846-3	WS-059	Lumina Covered Court, Lumina Homes Plaridel, Culianin, Plaridel	Deep Well	03-Mar-23	9:58 am	03-Mar-23	3:24 pm	03-Mar-23	3:33 pm	<1	<1	8	PASSED
233-89847-3	WS-053	San Jose Barangay Hall, San Jose, Plaridel	Deep Well	03-Mar-23	10:14 am	03-Mar-23	3:24 pm	03-Mar-23	3:33 pm	<1	<1	10	PASSED
233-89848-3	WS-074	Banga I Barangay Hall, Banga I, Plaridel	Deep Well	03-Mar-23	11:19 am	03-Mar-23	3:24 pm	03-Mar-23	3:33 pm	<1	<1	10	PASSED
233-89849-3	WS-038	Tabang Elementary School, Tabang, Plaridel	Deep Well	03-Mar-23	11:34 am	03-Mar-23	3:24 pm	03-Mar-23	3:33 pm	<1	<1	4	PASSED
233-89850-3	PS-07	Bulihan Pump Station	Deep Well	03-Mar-23	10:29 am	03-Mar-23	3:24 pm	03-Mar-23	3:33 pm	<1	<1	6	PASSED
233-89851-3	WS-067	St. Agatha Homes 2 Club House, Bulihan, Plaridel	Deep Well	03-Mar-23	10:45 am	03-Mar-23	3:24 pm	03-Mar-23	3:33 pm	<1	<1	8	PASSED
233-90130-3	WS-060	RHU Plaridel	Deep Well	09-Mar-23	9:59 am	09-Mar-23	3:00 pm	09-Mar-23	3:09 pm	<1	<1	8	PASSED

233-90131-3	WS-010	Sipat Barangay Hall, Sipat, Plaridel	Deep Well	09-Mar-23	10:15 am	09-Mar-23	3:00 pm	09-Mar-23	3:09 pm	<1	<1	6	PASSED
233-90132-3	WS-022	Sto. Nino Barangay Hall, Sto. Nino, Plaridel	Deep Well	09-Mar-23	11:16 am	09-Mar-23	3:00 pm	09-Mar-23	3:09 pm	<1	<1	10	PASSED
233-90133-3	WS-006	Sangguniang Barangay ng Lagundi, Lagundi, Plaridel	Deep Well	09-Mar-23	11:01 am	09-Mar-23	3:00 pm	09-Mar-23	3:09 pm	<1	<1	4	PASSED
233-90134-3	WS-036	Lalangan Barangay Hall, Lalangan, Plaridel	Deep Well	09-Mar-23	11:27 am	09-Mar-23	3:00 pm	09-Mar-23	3:09 pm	<1	<1	10	PASSED
233-90135-3	WS-038	National Road, Rueda Barangay Hall, Rueda, Plaridel	Deep Well	09-Mar-23	10:50 am	09-Mar-23	3:00 pm	09-Mar-23	3:09 pm	<1	<1	10	PASSED
233-90136-3	WS-071	Sta. Ines Barangay Hall, Sta. Ines, Plaridel	Deep Well	09-Mar-23	12:03 pm	09-Mar-23	3:00 pm	09-Mar-23	3:09 pm	<1	<1	8	PASSED
233-90137-3	PS-04	Sipat Pump Station	Deep Well	09-Mar-23	10:24 am	09-Mar-23	3:00 pm	09-Mar-23	3:09 pm	<1	<1	6	PASSED
233-90138-3	PS-09	Plaridel Heights Pump Station	Deep Well	09-Mar-23	11:37 am	09-Mar-23	3:00 pm	09-Mar-23	3:09 pm	<1	<1	2	PASSED
233-90139-3	PS-10	Sitio Santiago Pump Station	Deep Well	09-Mar-23	11:53 am	09-Mar-23	3:00 pm	09-Mar-23	3:09 pm	<1	<1	2	PASSED
233-90140-3	PS-02	Tabang Pump Station	Deep Well	09-Mar-23	11:45 am	09-Mar-23	3:00 pm	09-Mar-23	3:09 pm	<1	<1	4	PASSED
233-90141-3	WS-005	Dampol National High School, Dampol, Plaridel	Deep Well	09-Mar-23	10:39 am	09-Mar-23	3:00 pm	09-Mar-23	3:09 pm	<1	<1	8	PASSED
234-90466-3	WS-034	Plaridel Municipal Jail (BJMP) Poblacion, Plaridel	Deep Well	03-Apr-23	9:35 am	03-Apr-23	3:20 pm	03-Apr-23	3:29 pm	<1	<1	10	PASSED
234-90467-3	WS-033	Banga Elementary School, Garcia St., Banga II, Plaridel	Deep Well	03-Apr-23	9:47 am	03-Apr-23	3:20 pm	03-Apr-23	3:29 pm	<1	<1	6	PASSED

234-90468-3	PS-03	Bintog Pump Station	Deep Well	03-Apr-23	10:39 am	03-Apr-23	3:20 pm	03-Apr-23	3:29 pm	<1	<1	2	PASSED
234-90469-3	PS-07	Parulan Pump Station	Deep Well	03-Apr-23	11:13 am	03-Apr-23	3:20 pm	03-Apr-23	3:29 pm	<1	<1	2	PASSED
234-90470-3	WS-017	Agnaya Barangay Hall, Agnaya, Plaridel	Deep Well	03-Apr-23	12:05 pm	03-Apr-23	3:20 pm	03-Apr-23	3:29 pm	<1	<1	4	PASSED
234-90471-3	WS-047	Parulan Barangay Hall, Parulan, Plaridel	Deep Well	03-Apr-23	9:57 am	03-Apr-23	3:20 pm	03-Apr-23	3:29 pm	<1	<1	10	PASSED
234-90472-3	WS-063	Barangay Hall Bintog, Plaridel	Deep Well	03-Apr-23	10:08 am	03-Apr-23	3:20 pm	03-Apr-23	3:29 pm	<1	<1	18	PASSED
234-90473-3	WS-059	Lumina Covered Court, Lumina Homes Plaridel, Culianin, Plaridel	Deep Well	03-Apr-23	10:19 am	03-Apr-23	3:20 pm	03-Apr-23	3:29 pm	<1	<1	18	PASSED
234-90474-3	WS-053	San Jose Barangay Hall, San Jose, Plaridel	Deep Well	03-Apr-23	10:28 am	03-Apr-23	3:20 pm	03-Apr-23	3:29 pm	<1	<1	10	PASSED
234-90475-3	WS-074	Banga I Barangay Hall, Banga I, Plaridel	Deep Well	03-Apr-23	11:41 am	03-Apr-23	3:20 pm	03-Apr-23	3:29 pm	<1	<1	10	PASSED
234-90476-3	WS-038	Tabang Elementary School, Tabang, Plaridel	Deep Well	03-Apr-23	11:54 am	03-Apr-23	3:20 pm	03-Apr-23	3:29 pm	<1	<1	4	PASSED
234-90477-3	PS-07	Bulihan Pump Station	Deep Well	03-Apr-23	11:25 am	03-Apr-23	3:20 pm	03-Apr-23	3:29 pm	<1	<1	6	PASSED
234-90478-3	WS-067	St. Agatha Homes 2 Club House, Bulihan, Plaridel	Deep Well	03-Apr-23	10:50 am	03-Apr-23	3:20 pm	03-Apr-23	3:29 pm	<1	<1	2	PASSED
234-90708-3	WS-060	RHU Plaridel	Deep Well	13-Apr-23	11:27 am	13-Apr-23	3:04 pm	13-Apr-23	3:13 pm	<1	<1	18	PASSED
234-90709-3	WS-010	Sipat Barangay Hall, Sipat, Plaridel	Deep Well	13-Apr-23	10:58 am	13-Apr-23	3:04 pm	13-Apr-23	3:13 pm	<1	<1	6	PASSED



234-90710-3	WS-022	Sto. Nino Barangay Hall, Sto. Nino, Plaridel	Deep Well	13-Apr-23	9:39 am	13-Apr-23	3:04 pm	13-Apr-23	3:13 pm	<1	<1	12	PASSED
234-90711-3	WS-006	Sangguniang Barangay ng Lagundi, Lagundi, Plaridel	Deep Well	13-Apr-23	10:04 am	13-Apr-23	3:04 pm	13-Apr-23	3:13 pm	<1	<1	10	PASSED
234-90712-3	WS-036	Lalangan Barangay Hall, Lalangan, Plaridel	Deep Well	13-Apr-23	9:30 am	13-Apr-23	3:04 pm	13-Apr-23	3:13 pm	<1	<1	4	PASSED
234-90713-3	WS-038	National Road, Rueda Barangay Hall, Rueda, Plaridel	Deep Well	13-Apr-23	10:12 am	13-Apr-23	3:04 pm	13-Apr-23	3:13 pm	<1	<1	8	PASSED
234-90714-3	WS-071	Sta. Ines Barangay Hall, Sta. Ines, Plaridel	Deep Well	13-Apr-23	8:59 am	13-Apr-23	3:04 pm	13-Apr-23	3:13 pm	<1	<1	10	PASSED
234-90715-3	PS-04	Sipat Pump Station	Deep Well	13-Apr-23	10:40 am	13-Apr-23	3:04 pm	13-Apr-23	3:13 pm	<1	<1	10	PASSED
234-90716-3	PS-09	Plaridel Heights Pump Station	Deep Well	13-Apr-23	12:00 nn	13-Apr-23	3:04 pm	13-Apr-23	3:13 pm	<1	<1	6	PASSED
234-90717-3	PS-10	Sitio Santiago Pump Station	Deep Well	13-Apr-23	9:09 am	13-Apr-23	3:04 pm	13-Apr-23	3:13 pm	<1	<1	2	PASSED
234-90718-3	PS-02	Tabang Pump Station	Deep Well	13-Apr-23	9:16 am	13-Apr-23	3:04 pm	13-Apr-23	3:13 pm	<1	<1	2	PASSED
234-90719-3	WS-005	Dampol National High School, Dampol, Plaridel	Deep Well	13-Apr-23	10:24 am	13-Apr-23	3:04 pm	13-Apr-23	3:13 pm	<1	<1	4	PASSED
235-91238-3	WS-034	Plaridel Municipal Jail (BJMP) Poblacion, Plaridel	Deep Well	#####	9:05 am	04-May-23	3:24 pm	04-May-23	3:33 pm	<1	<1	200	PASSED
235-91239-3	WS-033	Banga Elementary School, Garcia St., Banga II, Plaridel	Deep Well	#####	9:16 am	04-May-23	3:24 pm	04-May-23	3:33 pm	<1	<1	150	PASSED
235-91240-3	PS-03	Bintog Pump Station	Deep Well	#####	10:22 am	04-May-23	3:24 pm	04-May-23	3:33 pm	<1	<1	35	PASSED

235-91241-3	PS-07	Parulan Pump Station	Deep Well	#####	9:48 am	04-May-23	3:24 pm	04-May-23	3:33 pm	<1	<1	6	PASSED
235-91242-3	WS-017	Agnaya Barangay Hall, Agnaya, Plaridel	Deep Well	#####	11:15 am	04-May-23	3:24 pm	04-May-23	3:33 pm	<1	<1	170	PASSED
235-91243-3	WS-047	Parulan Barangay Hall, Parulan, Plaridel	Deep Well	#####	9:30 am	04-May-23	3:24 pm	04-May-23	3:33 pm	<1	<1	200	PASSED
235-91244-3	WS-063	Barangay Hall Bintog, Plaridel	Deep Well	#####	9:41 am	04-May-23	3:24 pm	04-May-23	3:33 pm	<1	<1	18	PASSED
235-91245-3	WS-059	Lumina Covered Court, Lumina Homes Plaridel, Culianin, Plaridel	Deep Well	#####	9:56 am	04-May-23	3:24 pm	04-May-23	3:33 pm	<1	<1	12	PASSED
235-91246-3	WS-053	San Jose Barangay Hall, San Jose, Plaridel	Deep Well	#####	10:09 am	04-May-23	3:24 pm	04-May-23	3:33 pm	<1	<1	4	PASSED
235-91247-3	WS-074	Banga I Barangay Hall, Banga I, Plaridel	Deep Well	#####	10:52 am	04-May-23	3:24 pm	04-May-23	3:33 pm	<1	<1	6	PASSED
235-91248-3	WS-038	Tabang Elementary School, Tabang, Plaridel	Deep Well	#####	11:06 am	04-May-23	3:24 pm	04-May-23	3:33 pm	<1	<1	10	PASSED
235-91249-3	PS-07	Bulihan Pump Station	Deep Well	#####	9:24 am	04-May-23	3:24 pm	04-May-23	3:33 pm	<1	<1	300	PASSED
235-91250-3	WS-067	St. Agatha Homes 2 Club House, Bulihan, Plaridel	Deep Well	#####	10:35 am	04-May-23	3:24 pm	04-May-23	3:33 pm	<1	<1	100	PASSED
235-91443-3	WS-060	RHU Plaridel	Deep Well	#####	11:24 am	11-May-23	3:00 pm	11-May-23	3:09 pm	<1	<1	300	PASSED
235-91444-3	WS-010	Sipat Barangay Hall, Sipat, Plaridel	Deep Well	#####	11:04 am	11-May-23	3:00 pm	11-May-23	3:09 pm	<1	<1	4	PASSED
235-91445-3	WS-022	Sto. Nino Barangay Hall, Sto. Nino, Plaridel	Deep Well	#####	9:42 am	11-May-23	3:00 pm	11-May-23	3:09 pm	<1	<1	6	PASSED

235-91446-3	WS-006	Sangguniang Barangay ng Lagundi, Lagundi, Plaridel	Deep Well	#####	10:15 am	11-May-23	3:00 pm	11-May-23	3:09 pm	<1	<1	150	PASSED
235-91447-3	WS-036	Lalangan Barangay Hall, Lalangan, Plaridel	Deep Well	#####	9:31 am	11-May-23	3:00 pm	11-May-23	3:09 pm	<1	<1	10	PASSED
235-91448-3	WS-038	National Road, Rueda Barangay Hall, Rueda, Plaridel	Deep Well	#####	10:27 am	11-May-23	3:00 pm	11-May-23	3:09 pm	<1	<1	12	PASSED
235-91449-3	WS-071	Sta. Ines Barangay Hall, Sta. Ines, Plaridel	Deep Well	#####	11:17 am	11-May-23	3:00 pm	11-May-23	3:09 pm	<1	<1	100	PASSED
235-91450-3	PS-04	Sipat Pump Station	Deep Well	#####	10:50 am	11-May-23	3:00 pm	11-May-23	3:09 pm	<1	<1	10	PASSED
235-91451-3	PS-09	Plaridel Heights Pump Station	Deep Well	#####	9:23 am	11-May-23	3:00 pm	11-May-23	3:09 pm	<1	<1	4	PASSED
235-91452-3	PS-10	Sitio Santiago Pump Station	Deep Well	#####	9:04 am	11-May-23	3:00 pm	11-May-23	3:09 pm	<1	<1	300	PASSED
235-91453-3	PS-02	Tabang Pump Station	Deep Well	#####	9:12 am	11-May-23	3:00 pm	11-May-23	3:09 pm	<1	<1	200	PASSED
235-91454-3	WS-005	Dampol National High School, Dampol, Plaridel	Deep Well	#####	10:38am	11-May-23	3:00 pm	11-May-23	3:09 pm	<1	<1	16	PASSED
236-91816-3	WS-034	Plaridel Municipal Jail (BJMP) Poblacion, Plaridel	Deep Well	01-Jun-23	9:04 am	01-Jun-23	3:00 pm	01-Jun-23	3:09 pm	<1	<1	14	PASSED
236-91817-3	WS-033	Banga Elementary School, Garcia St., Banga II, Plaridel	Deep Well	01-Jun-23	9:13 am	01-Jun-23	3:00 pm	01-Jun-23	3:09 pm	<1	<1	16	PASSED
236-91818-3	PS-03	Bintog Pump Station	Deep Well	01-Jun-23	10:36 am	01-Jun-23	3:00 pm	01-Jun-23	3:09 pm	<1	<1	24	PASSED
236-91819-3	PS-07	Parulan Pump Station	Deep Well	01-Jun-23	9:55 am	01-Jun-23	3:00 pm	01-Jun-23	3:09 pm	<1	<1	10	PASSED

236-91820-3	WS-017	Agnaya Barangay Hall, Agnaya, Plaridel	Deep Well	01-Jun-23	11:27 am	01-Jun-23	3:00 pm	01-Jun-23	3:09 pm	<1	<1	6	PASSED
236-91821-3	WS-047	Parulan Barangay Hall, Parulan, Plaridel	Deep Well	01-Jun-23	9:33 am	01-Jun-23	3:00 pm	01-Jun-23	3:09 pm	<1	<1	24	PASSED
236-91822-3	WS-063	Barangay Hall Bintog, Plaridel	Deep Well	01-Jun-23	9:47 am	01-Jun-23	3:00 pm	01-Jun-23	3:09 pm	<1	<1	8	PASSED
236-91823-3	WS-059	Lumina Covered Court, Lumina Homes Plaridel, Culianin, Plaridel	Deep Well	01-Jun-23	10:10 am	01-Jun-23	3:00 pm	01-Jun-23	3:09 pm	<1	<1	8	PASSED
236-91824-3	WS-053	San Jose Barangay Hall, San Jose, Plaridel	Deep Well	01-Jun-23	10:24 am	01-Jun-23	3:00 pm	01-Jun-23	3:09 pm	<1	<1	2	PASSED
236-91825-3	WS-074	Banga I Barangay Hall, Banga I, Plaridel	Deep Well	01-Jun-23	11:06 am	01-Jun-23	3:00 pm	01-Jun-23	3:09 pm	<1	<1	4	PASSED
236-91826-3	WS-002	National Road, Rueda Barangay Hall, Rueda, Plaridel	Deep Well	01-Jun-23	11:15 am	01-Jun-23	3:00 pm	01-Jun-23	3:09 pm	<1	<1	10	PASSED
236-91827-3	PS-07	Bulihan Pump Station	Deep Well	01-Jun-23	9:25 am	01-Jun-23	3:00 pm	01-Jun-23	3:09 pm	<1	<1	6	PASSED
236-91828-3	WS-067	St. Agatha Homes 2 Club House, Bulihan, Plaridel	Deep Well	01-Jun-23	10:25 am	01-Jun-23	3:00 pm	01-Jun-23	3:09 pm	<1	<1	20	PASSED
236-92353-3	WS-060	RHU Plaridel	Deep Well	08-Jun-23	11:43 am	08-Jun-23	3:02 pm	08-Jun-23	3:11 pm	<1	<1	16	PASSED
236-92354-3	WS-010	Sipat Barangay Hall, Sipat, Plaridel	Deep Well	08-Jun-23	11:34 am	08-Jun-23	3:02 pm	08-Jun-23	3:11 pm	<1	<1	24	PASSED
236-92355-3	WS-022	Sto. Nino Barangay Hall, Sto. Nino, Plaridel	Deep Well	08-Jun-23	10:12 am	08-Jun-23	3:02 pm	08-Jun-23	3:11 pm	<1	<1	8	PASSED
236-92356-3	WS-006	Sangguniang Barangay ng Lagundi, Lagundi, Plaridel	Deep Well	08-Jun-23	10:40 am	08-Jun-23	3:02 pm	08-Jun-23	3:11 pm	<1	<1	10	PASSED

236-92357-3	WS-036	Lalangan Barangay Hall, Lalangan, Plaridel	Deep Well	08-Jun-23	9:55 am	08-Jun-23	3:02 pm	08-Jun-23	3:11 pm	<1	<1	6	PASSED
236-92358-3	WS-038	National Road, Rueda Barangay Hall, Rueda, Plaridel	Deep Well	08-Jun-23	10:51 am	08-Jun-23	3:02 pm	08-Jun-23	3:11 pm	<1	<1	24	PASSED
236-92359-3	WS-071	Sta. Ines Barangay Hall, Sta. Ines, Plaridel	Deep Well	08-Jun-23	9:21 am	08-Jun-23	3:02 pm	08-Jun-23	3:11 pm	<1	<1	10	PASSED
236-92360-3	PS-04	Sipat Pump Station	Deep Well	08-Jun-23	11:26 am	08-Jun-23	3:02 pm	08-Jun-23	3:11 pm	<1	<1	10	PASSED
236-92361-3	PS-09	Plaridel Heights Pump Station	Deep Well	08-Jun-23	9:47 am	08-Jun-23	3:02 pm	08-Jun-23	3:11 pm	<1	<1	10	PASSED
236-92362-3	PS-10	Sitio Santiago Pump Station	Deep Well	08-Jun-23	9:30 am	08-Jun-23	3:02 pm	08-Jun-23	3:11 pm	<1	<1	10	PASSED
236-92363-3	PS-02	Tabang Pump Station	Deep Well	08-Jun-23	9:39 am	08-Jun-23	3:02 pm	08-Jun-23	3:11 pm	<1	<1	4	PASSED
236-92364-3	WS-005	Dampol National High School, Dampol, Plaridel	Deep Well	08-Jun-23	11:04 am	08-Jun-23	3:02 pm	08-Jun-23	3:11 pm	<1	<1	8	PASSED
237-93056-3	WS-060	RHU, Plaridel	Deep Well	06-Jul-23	11:08 am	06-Jul-23	3:21 pm	06-Jul-23	3:30 pm	<1	<1	2	PASSED
237-93057-3	WS-010	Sipat Barangay Hall, Sipat, Plaridel	Deep Well	06-Jul-23	10:28 am	06-Jul-23	3:21 pm	06-Jul-23	3:30 pm	<1	<1	6	PASSED
237-93058-3	WS-022	Sto. Nino Barangay Hall, Sto. Nino, Plaridel	Deep Well	06-Jul-23	9:17 am	06-Jul-23	3:21 pm	06-Jul-23	3:30 pm	<1	<1	14	PASSED
237-93059-3	WS-006	Sangguniang Barangay Lagundi, Lagundi, Plaridel	Deep Well	06-Jul-23	9:39 am	06-Jul-23	3:21 pm	06-Jul-23	3:30 pm	<1	<1	2	PASSED
237-93060-3	WS-036	Lalanganm Barangay Hall, Lalangan, Plaridel	Deep Well	06-Jul-23	9:10 am	06-Jul-23	3:21 pm	06-Jul-23	3:30 pm	<1	<1	2	PASSED

237-93061-3	WS-002	National Road, Rueda Barangay Hall, Rueda, Plaridel	Deep Well	06-Jul-23	9:47 am	06-Jul-23	3:21 pm	06-Jul-23	3:30 pm	<1	<1	4	PASSED
237-93062-3	WS-071	Sta. Ines Barangay Hall, Sta. Ines, Plaridel	Deep Well	06-Jul-23	10:45 am	06-Jul-23	3:21 pm	06-Jul-23	3:30 pm	<1	<1	16	PASSED
237-93063-3	PS-04	Sipat Pump Station	Deep Well	06-Jul-23	10:15 am	06-Jul-23	3:21 pm	06-Jul-23	3:30 pm	<1	<1	2	PASSED
237-93064-3	PS-09	Plaridel Heights Pump Station	Deep Well	06-Jul-23	9:01 am	06-Jul-23	3:21 pm	06-Jul-23	3:30 pm	<1	<1	10	PASSED
237-93065-3	PS-10	Sitio Santiago Pump Station	Deep Well	06-Jul-23	11:28 am	06-Jul-23	3:21 pm	06-Jul-23	3:30 pm	<1	<1	14	PASSED
237-93066-3	PS-02	Tabang Pump Station	Deep Well	06-Jul-23	8:52 am	06-Jul-23	3:21 pm	06-Jul-23	3:30 pm	<1	<1	4	PASSED
237-93067-3	WS-005	Dampol Natioan High School, Dampol, Plaridel	Deep Well	06-Jul-23	10:04 am	06-Jul-23	3:21 pm	06-Jul-23	3:30 pm	<1	<1	10	PASSED
237-93340-3	WS-034	Plaridel Municipal Jail (BJMP), Poblacion, Plaridel	Deep Well	14-Jul-23	9:31 am	14-Jul-23	2:59 pm	14-Jul-23	3:07 pm	<1	<1	20	PASSED
237-93341-3	WS-033	Banga Elementary School, Garcia St., Banga II, Plaridel	Deep Well	14-Jul-23	9:43 am	14-Jul-23	2:59 pm	14-Jul-23	3:07 pm	<1	<1	18	PASSED
237-93342-3	PS-08	Bulihan Pump Station	Deep Well	14-Jul-23	11:35 am	14-Jul-23	2:59 pm	14-Jul-23	3:07 pm	<1	<1	12	PASSED
237-93343-3	PS-03	Bintog Pump Station	Deep Well	14-Jul-23	10:30 am	14-Jul-23	2:59 pm	14-Jul-23	3:07 pm	<1	<1	12	PASSED
237-93344-3	WS-017	Agnaya Barangay Hall, Agnaya, Plaridel	Deep Well	14-Jul-23	12:37 pm	14-Jul-23	2:59 pm	14-Jul-23	3:07 pm	<1	<1	10	PASSED
237-93345-3	WS-047	Parulan Barangay Hall, Parulan, Plaridel	Deep Well	14-Jul-23	10:07 am	14-Jul-23	2:59 pm	14-Jul-23	3:07 pm	<1	<1	4	PASSED
237-93346-3	WS-063	Barangay Hall Bintog, Plaridel	Deep Well	14-Jul-23	10:19 am	14-Jul-23	2:59 pm	14-Jul-23	3:07 pm	<1	<1	6	PASSED

237-93347-3	WS-059	Lumina Covered Court, Lumina Homes Plaridel, Culianin, Plaridel	Deep Well	14-Jul-23	10:44 am	14-Jul-23	2:59 pm	14-Jul-23	3:07 pm	<1	<1	6	PASSED
237-93348-3	WS-053	San Jose Barangay Hall, San Jose, Plaridel	Deep Well	14-Jul-23	10:58 am	14-Jul-23	2:59 pm	14-Jul-23	3:07 pm	<1	<1	2	PASSED
237-93349-3	WS-074	Banga I Barangay Hall, Banga I, Plaridel	Deep Well	14-Jul-23	12:11 pm	14-Jul-23	2:59 pm	14-Jul-23	3:07 pm	<1	<1	4	PASSED
237-93350-3	WS-038	Tabang Elementary School, Tabang, Plaridel	Deep Well	14-Jul-23	12:24 pm	14-Jul-23	2:59 pm	14-Jul-23	3:07 pm	<1	<1	8	PASSED
237-93351-3	PS-07	Parulan Pump Station	Deep Well	14-Jul-23	9:55 am	14-Jul-23	2:59 pm	14-Jul-23	3:07 pm	<1	<1	10	PASSED
237-93352-3	WS-067	St. Agatha Homes 2 Club House, Bulihan, Plaridel	Deep Well	14-Jul-23	11:49	14-Jul-23	2:59 pm	14-Jul-23	3:07 pm	<1	<1	10	PASSED
238-93656-3	WS-034	Plaridel Municipal Jail (BJMP) Poblacion, Plaridel	Deep Well	03-Aug-23	10:05 am	03-Aug-23	2:55 pm	03-Aug-23	3:03 pm	<1	<1	10	PASSED
238-93657-3	WS-033	Banga Elementary School, Garcia St., Banga II, Plaridel	Deep Well	03-Aug-23	10:17 am	03-Aug-23	2:55 pm	03-Aug-23	3:03 pm	<1	<1	10	PASSED
238-93658-3	PS-08	Bulihan Pump Station	Deep Well	03-Aug-23	11:36 am	03-Aug-23	2:55 pm	03-Aug-23	3:03 pm	<1	<1	10	PASSED
238-93659-3	PS-03	Bintog Pump Station	Deep Well	03-Aug-23	10:58 am	03-Aug-23	2:55 pm	03-Aug-23	3:03 pm	<1	<1	4	PASSED
238-93660-3	WS-017	Agnaya Barangay Hall, Agnaya, Plaridel	Deep Well	03-Aug-23	12:46 pm	03-Aug-23	2:55 pm	03-Aug-23	3:03 pm	<1	<1	8	PASSED
238-93661-3	WS-047	Parulan Barangay Hall, Parulan, Plaridel	Deep Well	03-Aug-23	10:38 am	03-Aug-23	2:55 pm	03-Aug-23	3:03 pm	<1	<1	6	PASSED
238-93662-3	WS-063	Barangay Hall Bintog, Plaridel	Deep Well	03-Aug-23	10:45 am	03-Aug-23	2:55 pm	03-Aug-23	3:03 pm	<1	<1	2	PASSED

238-93663-3	WS-059	Lumina Covered Court, Lumina Homes Plaridel, Culianin, Plaridel	Deep Well	03-Aug-23	11:13 am	03-Aug-23	2:55 pm	03-Aug-23	3:03 pm	<1	<1	2	PASSED
238-93664-3	WS-053	San Jose Barangay Hall, San Jose, Plaridel	Deep Well	03-Aug-23	11:25 am	03-Aug-23	2:55 pm	03-Aug-23	3:03 pm	<1	<1	4	PASSED
238-93665-3	WS-074	Banga I Barangay Hall, Banga I, Plaridel	Deep Well	03-Aug-23	12:21 pm	03-Aug-23	2:55 pm	03-Aug-23	3:03 pm	<1	<1	8	PASSED
238-93666-3	WS-038	Tabang Elementary School, Tabang, Plaridel	Deep Well	03-Aug-23	12:34 pm	03-Aug-23	2:55 pm	03-Aug-23	3:03 pm	<1	<1	10	PASSED
238-93667-3	PS-07	Parulan Pump Station	Deep Well	03-Aug-23	10:29 am	03-Aug-23	2:55 pm	03-Aug-23	3:03 pm	<1	<1	10	PASSED
238-93668-3	WS-67	St. Agatha Homes 2 Club House, Bulihan, Plaridel	Deep Well	03-Aug-23	11:54 am	03-Aug-23	2:55 pm	03-Aug-23	3:03 pm	<1	<1	4	PASSED
238-94185-3	WS-060	RHU Plaridel	Deep Well	11-Aug-23	11:28 am	11-Aug-23	3:19 pm	11-Aug-23	3:28 pm	<1	<1	6	PASSED
238-94186-3	WS-010	Sipat Barangay Hall, Sipat, Plaridel	Deep Well	11-Aug-23	11:14 am	11-Aug-23	3:19 pm	11-Aug-23	3:28 pm	<1	<1	10	PASSED
238-94187-3	WS-022	Sto. Nino Barangay Hall, Sto. Nino, Plaridel	Deep Well	11-Aug-23	10:09 am	11-Aug-23	3:19 pm	11-Aug-23	3:28 pm	<1	<1	10	PASSED
238-94188-3	WS-006	Sangguniang Barangay ng Lagundi, Lagundi, Plaridel	Deep Well	11-Aug-23	10:24 am	11-Aug-23	3:19 pm	11-Aug-23	3:28 pm	<1	<1	4	PASSED
238-94189-3	WS-036	Lalangan Barangay Hall, Lalangan, Plaridel	Deep Well	11-Aug-23	9:53 am	11-Aug-23	3:19 pm	11-Aug-23	3:28 pm	<1	<1	2	PASSED
238-94190-3	WS-002	National Road, Rueda Barangay Hall, Rueda, Plaridel	Deep Well	11-Aug-23	10:33 am	11-Aug-23	3:19 pm	11-Aug-23	3:28 pm	<1	<1	8	PASSED



238-94191-3	WS-071	Sta. Ines Barangay Hall, Sta. Ines, Plaridel	Deep Well	11-Aug-23	9:06 am	11-Aug-23	3:19 pm	11-Aug-23	3:28 pm	<1	<1	10	PASSED
238-94192-3	PS-04	Sipat Pump Station	Deep Well	11-Aug-23	10:59 am	11-Aug-23	3:19 pm	11-Aug-23	3:28 pm	<1	<1	10	PASSED
238-94193-3	PS-09	Plaridel Heights Pump Station	Deep Well	11-Aug-23	9:45 am	11-Aug-23	3:19 pm	11-Aug-23	3:28 pm	<1	<1	6	PASSED
238-94194-3	PS-10	Sitio Santiago Pump Station	Deep Well	11-Aug-23	9:20 am	11-Aug-23	3:19 pm	11-Aug-23	3:28 pm	<1	<1	2	PASSED
238-94195-3	PS-02	Tabang Pump Station	Deep Well	11-Aug-23	9:31 am	11-Aug-23	3:19 pm	11-Aug-23	3:28 pm	<1	<1	4	PASSED
238-94196-3	WS-0005	Dampol National High School, Dampol, Plaridel	Deep Well	11-Aug-23	10:48 am	11-Aug-23	3:19 pm	11-Aug-23	3:28 pm	<1	<1	6	PASSED
239-94819-3	WS-034	Plaridel Municipal Jail (BJMP) Poblacion, Plaridel	Deep Well	07-Sep-23	9:03 am	07-Sep-23	2:45 pm	07-Sep-23	2:53 pm	<1	<1	4	PASSED
239-94820-3	WS-033	Banga Elementary School, Garcia St., Banga II, Plaridel	Deep Well	07-Sep-23	9:15 am	07-Sep-23	2:45 pm	07-Sep-23	2:53 pm	<1	<1	8	PASSED
239-94821-3	PS-08	Bulihan Pump Station	Deep Well	07-Sep-23	10:03 am	07-Sep-23	2:45 pm	07-Sep-23	2:53 pm	<1	<1	6	PASSED
239-94822-3	PS-03	Bintog Pump Station	Deep Well	07-Sep-23	9:31 am	07-Sep-23	2:45 pm	07-Sep-23	2:53 pm	<1	<1	10	PASSED
239-94823-3	WS-017	Agnaya Barangay Hall, Agnaya, Plaridel	Deep Well	07-Sep-23	11:36 am	07-Sep-23	2:45 pm	07-Sep-23	2:53 pm	<1	<1	10	PASSED
239-94824-3	WS-047	Parulan Barangay Hall, Parulan, Plaridel	Deep Well	07-Sep-23	10:47 am	07-Sep-23	2:45 pm	07-Sep-23	2:53 pm	<1	<1	4	PASSED
239-94825-3	WS-063	Barangay Hall Bintog, Plaridel	Deep Well	07-Sep-23	9:22 am	07-Sep-23	2:45 pm	07-Sep-23	2:53 pm	<1	<1	8	PASSED

239-94826-3	WS-059	Lumina Covered Court, Lumina Homes Plaridel, Culianin, Plaridel	Deep Well	07-Sep-23	9:39 am	07-Sep-23	2:45 pm	07-Sep-23	2:53 pm	<1	<1	6	PASSED
239-94827-3	WS-053	San Jose Barangay Hall, San Jose, Plaridel	Deep Well	07-Sep-23	9:56 am	07-Sep-23	2:45 pm	07-Sep-23	2:53 pm	<1	<1	10	PASSED
239-94828-3	WS-074	Banga I Barangay Hall, Banga I, Plaridel	Deep Well	07-Sep-23	11:12 am	07-Sep-23	2:45 pm	07-Sep-23	2:53 pm	<1	<1	10	PASSED
239-94829-3	WS-038	Tabang Elementary School, Tabang, Plaridel	Deep Well	07-Sep-23	11:24 am	07-Sep-23	2:45 pm	07-Sep-23	2:53 pm	<1	<1	10	PASSED
239-94830-3	PS-07	Parulan Pump Station	Deep Well	07-Sep-23	10:35 am	07-Sep-23	2:45 pm	07-Sep-23	2:53 pm	<1	<1	4	PASSED
239-94831-3	WS-067	St. Agatha Homes 2 Club House, Bulihan, Plaridel	Deep Well	07-Sep-23	10:20 am	07-Sep-23	2:45 pm	07-Sep-23	2:53 pm	<1	<1	8	PASSED
239-95098-3	WS-060	RHU Plaridel	Deep Well	14-Sep-23	11:24 am	14-Sep-23	3:25 pm	14-Sep-23	3:34 pm	<1	<1	4	PASSED
239-95099-3	WS-010	Sipat Barangay Hall, Sipat, Plaridel	Deep Well	14-Sep-23	11:06 am	14-Sep-23	3:25 pm	14-Sep-23	3:34 pm	<1	<1	6	PASSED
239-95100-3	WS-022	Sto. Nino Barangay Hall, Sto. Nino, Plaridel	Deep Well	14-Sep-23	9:49 am	14-Sep-23	3:25 pm	14-Sep-23	3:34 pm	<1	<1	8	PASSED
239-95101-3	WS-006	Sangguniang Barangay ng Lagundi, Lagundi, Plaridel	Deep Well	14-Sep-23	10:11 am	14-Sep-23	3:25 pm	14-Sep-23	3:34 pm	<1	<1	10	PASSED
239-95102-3	WS-036	Lalangan Barangay Hall, Lalangan, Plaridel	Deep Well	14-Sep-23	9:34 am	14-Sep-23	3:25 pm	14-Sep-23	3:34 pm	<1	<1	10	PASSED
239-95103-3	WS-002	National Road, Rueda Barangay Hall, Rueda, Plaridel	Deep Well	14-Sep-23	10:23 am	14-Sep-23	3:25 pm	14-Sep-23	3:34 pm	<1	<1	4	PASSED

239-95104-3	WS-071	Sta. Ines Barangay Hall, Sta. Ines, Plaridel	Deep Well	14-Sep-23	8:52 am	14-Sep-23	3:25 pm	14-Sep-23	3:34 pm	<1	<1	8	PASSED
239-95105-3	PS-04	Sipat Pump Station	Deep Well	14-Sep-23	10:51 am	14-Sep-23	3:25 pm	14-Sep-23	3:34 pm	<1	<1	10	PASSED
239-95106-3	PS-09	Plaridel Heights Pump Station	Deep Well	14-Sep-23	9:25 am	14-Sep-23	3:25 pm	14-Sep-23	3:34 pm	<1	<1	10	PASSED
239-95107-3	PS-10	Sitio Santiago Pump Station	Deep Well	14-Sep-23	9:01 am	14-Sep-23	3:25 pm	14-Sep-23	3:34 pm	<1	<1	4	PASSED
239-95108-3	PS-02	Tabang Pump Station	Deep Well	14-Sep-23	9:13 am	14-Sep-23	3:25 pm	14-Sep-23	3:34 pm	<1	<1	6	PASSED
239-95109-3	WS-005	Dampol National High School, Dampol, Plaridel	Deep Well	14-Sep-23	10:40 am	14-Sep-23	3:25 pm	14-Sep-23	3:34 pm	<1	<1	10	PASSED
2310-95623-3	WS-034	Plaridel Municipal Jail (BJMP) Poblacion, Plaridel	Deep Well	05-Oct-23	9:06 am	05-Oct-23	3:00 pm	05-Oct-23	3:09 pm	<1	<1	4	PASSED
2310-95624-3	WS-033	Banga Elementary School, Garcia St., Banga II, Plaridel	Deep Well	05-Oct-23	9:14 am	05-Oct-23	3:00 pm	05-Oct-23	3:09 pm	<1	<1	6	PASSED
2310-95625-3	PS-08	Bulihan Pump Station	Deep Well	05-Oct-23	10:45 am	05-Oct-23	3:00 pm	05-Oct-23	3:09 pm	<1	<1	10	PASSED
2310-95626-3	PS-03	Bintog Pump Station	Deep Well	05-Oct-23	10:11 am	05-Oct-23	3:00 pm	05-Oct-23	3:09 pm	<1	<1	10	PASSED
2310-95627-3	WS-017	Agnaya Barangay Hall, Agnaya, Plaridel	Deep Well	05-Oct-23	11:31 am	05-Oct-23	3:00 pm	05-Oct-23	3:09 pm	<1	<1	4	PASSED
2310-95628-3	WS-047	Parulan Barangay Hall, Parulan, Plaridel	Deep Well	05-Oct-23	9:42 am	05-Oct-23	3:00 pm	05-Oct-23	3:09 pm	<1	<1	36	PASSED
2310-95629-3	WS-063	Barangay Hall Bintog, Plaridel	Deep Well	05-Oct-23	9:57 am	05-Oct-23	3:00 pm	05-Oct-23	3:09 pm	<1	<1	10	PASSED

2310-95630-3	WS-059	Lumina Covered Court, Lumina Homes Plaridel, Culianin, Plaridel	Deep Well	05-Oct-23	10:25 am	05-Oct-23	3:00 pm	05-Oct-23	3:09 pm	<1	<1	10	PASSED
2310-95631-3	WS-053	San Jose Barangay Hall, San Jose, Plaridel	Deep Well	05-Oct-23	10:37 am	05-Oct-23	3:00 pm	05-Oct-23	3:09 pm	<1	<1	6	PASSED
2310-95632-3	WS-074	Banga I Barangay Hall, Banga I, Plaridel	Deep Well	05-Oct-23	11:10 am	05-Oct-23	3:00 pm	05-Oct-23	3:09 pm	<1	<1	6	PASSED
2310-95633-3	WS-038	Tabang Elementary School, Tabang, Plaridel	Deep Well	05-Oct-23	11:21 am	05-Oct-23	3:00 pm	05-Oct-23	3:09 pm	<1	<1	2	PASSED
2310-95634-3	PS-07	Parulan Pump Station	Deep Well	05-Oct-23	9:33 am	05-Oct-23	3:00 pm	05-Oct-23	3:09 pm	<1	<1	2	PASSED
2310-95635-3	WS-067	St. Agatha Homes 2 Club House, Bulihan, Plaridel	Deep Well	05-Oct-23	10:54 am	05-Oct-23	3:00 pm	05-Oct-23	3:09 pm	<1	<1	2	PASSED
2310-95807-3	WS-060	RHU Plaridel	Deep Well	12-Oct-23	11:29 am	12-Oct-23	3:20 pm	12-Oct-23	3:29 pm	<1	<1	24	PASSED
2310-95808-3	WS-010	Sipat Barangay Hall, Sipat, Plaridel	Deep Well	12-Oct-23	11:16 am	12-Oct-23	3:20 pm	12-Oct-23	3:29 pm	<1	<1	8	PASSED
2310-95809-3	WS-022	Sto. Nino Barangay Hall, Sto. Nino, Plaridel	Deep Well	12-Oct-23	10:03 am	12-Oct-23	3:20 pm	12-Oct-23	3:29 pm	<1	<1	10	PASSED
2310-95810-3	WS-006	Sangguniang Barangay ng Lagundi, Lagundi, Plaridel	Deep Well	12-Oct-23	10:21 am	12-Oct-23	3:20 pm	12-Oct-23	3:29 pm	<1	<1	10	PASSED
2310-95811-3	WS-036	Lalangan Barangay Hall, Lalangan, Plaridel	Deep Well	12-Oct-23	9:50 am	12-Oct-23	3:20 pm	12-Oct-23	3:29 pm	<1	<1	4	PASSED
2310-95812-3	WS-002	National Road, Rueda Barangay Hall, Rueda, Plaridel	Deep Well	12-Oct-23	10:34 am	12-Oct-23	3:20 pm	12-Oct-23	3:29 pm	<1	<1	8	PASSED

2310-95813-3	WS-071	Sta. Ines Barangay Hall, Sta. Ines, Plaridel	Deep Well	12-Oct-23	9:05 am	12-Oct-23	3:20 pm	12-Oct-23	3:29 pm	<1	<1	10	PASSED
2310-95814-3	PS-04	Sipat Pump Station	Deep Well	12-Oct-23	10:58 am	12-Oct-23	3:20 pm	12-Oct-23	3:29 pm	<1	<1	6	PASSED
2310-95815-3	PS-09	Plaridel Heights Pump Station	Deep Well	12-Oct-23	9:38 am	12-Oct-23	3:20 pm	12-Oct-23	3:29 pm	<1	<1	12	PASSED
2310-95816-3	PS-10	Sitio Santiago Pump Station	Deep Well	12-Oct-23	9:15 am	12-Oct-23	3:20 pm	12-Oct-23	3:29 pm	<1	<1	10	PASSED
2310-95817-3	PS-02	Tabang Pump Station	Deep Well	12-Oct-23	9:27 am	12-Oct-23	3:20 pm	12-Oct-23	3:29 pm	<1	<1	10	PASSED
2310-95818-3	WS-005	Dampol National High School, Dampol, Plaridel	Deep Well	12-Oct-23	10:46 am	12-Oct-23	3:20 pm	12-Oct-23	3:29 pm	<1	<1	26	PASSED
2311-96094-3	WS-034	Plaridel Municipal Jail (BJMP) Poblacion, Plaridel	Deep Well	03-Nov-23	9:11 am	03-Nov-23	3:00 pm	03-Nov-23	3:09 pm	<1	<1	10	PASSED
2311-96095-3	WS-033	Banga Elementary School, Garcia St., Banga II, Plaridel	Deep Well	03-Nov-23	9:24 am	03-Nov-23	3:00 pm	03-Nov-23	3:09 pm	<1	<1	10	PASSED
2311-96096-3	PS-08	Bulihan Pump Station	Deep Well	03-Nov-23	10:48 am	03-Nov-23	3:00 pm	03-Nov-23	3:09 pm	<1	<1	10	PASSED
2311-96097-3	PS-03	Bintog Pump Station	Deep Well	03-Nov-23	10:03 am	03-Nov-23	3:00 pm	03-Nov-23	3:09 pm	<1	<1	26	PASSED
2311-96098-3	WS-017	Agnaya Barangay Hall, Agnaya, Plaridel	Deep Well	03-Nov-23	12:12 pm	03-Nov-23	3:00 pm	03-Nov-23	3:09 pm	<1	<1	2	PASSED
2311-96099-3	WS-047	Parulan Barangay Hall, Parulan, Plaridel	Deep Well	03-Nov-23	9:42 am	03-Nov-23	3:00 pm	03-Nov-23	3:09 pm	<1	<1	2	PASSED
2311-96100-3	WS-063	Barangay Hall Bintog, Plaridel	Deep Well	03-Nov-23	9:50 am	03-Nov-23	3:00 pm	03-Nov-23	3:09 pm	<1	<1	2	PASSED
2311-96101-3	WS-059	Lumina Covered Court, Lumina Homes Plaridel,	Deep Well	03-Nov-23	10:19 am	03-Nov-23	3:00 pm	03-Nov-23	3:09 pm	<1	<1	2	PASSED

		Culianin, Plaridel											
2311-96102-3	WS-053	San Jose Barangay Hall, San Jose, Plaridel	Deep Well	03-Nov-23	10:33 am	03-Nov-23	3:00 pm	03-Nov-23	3:09 pm	<1	<1	2	PASSED
2311-96103-3	WS-074	Banga I Barangay Hall, Banga I, Plaridel	Deep Well	03-Nov-23	11:47 am	03-Nov-23	3:00 pm	03-Nov-23	3:09 pm	<1	<1	4	PASSED
2311-96104-3	WS-038	Tabang Elementary School, Tabang, Plaridel	Deep Well	03-Nov-23	11:55 am	03-Nov-23	3:00 pm	03-Nov-23	3:09 pm	<1	<1	6	PASSED
2311-96105-3	PS-07	Parulan Pump Station	Deep Well	03-Nov-23	9:35 am	03-Nov-23	3:00 pm	03-Nov-23	3:09 pm	<1	<1	10	PASSED
2311-96106-3	WS-067	St. Agatha Homes 2 Club House, Bulihan, Plaridel	Deep Well	03-Nov-23	11:07 am	03-Nov-23	3:00 pm	03-Nov-23	3:09 pm	<1	<1	26	PASSED
2311-96107-3	WS-065	Barangay Hall Bagong Silang, Plaridel	Deep Well	03-Nov-23	11:26 am	03-Nov-23	3:00 pm	03-Nov-23	3:09 pm	<1	<1	8	PASSED
2311-96108-3	WS-062	Plaridel Water District, Poblacion, Plaridel	Deep Well	03-Nov-23	12:21 pm	03-Nov-23	3:00 pm	03-Nov-23	3:09 pm	<1	<1	10	PASSED
2311-96396-3	WS-060	RHU, Plaridel	Deep Well	09-Nov-23	11:55 am	09-Nov-23	3:24 pm	09-Nov-23	3:33 pm	<1	<1	4	PASSED
2311-96397-3	WS-010	Sipat Barangay Hall, Sipat, Plaridel	Deep Well	09-Nov-23	11:36 am	09-Nov-23	3:24 pm	09-Nov-23	3:33 pm	<1	<1	36	PASSED
2311-96398-3	WS-022	Sto. Nino Barangay Hall, Sto. Nino, Plaridel	Deep Well	09-Nov-23	9:59 am	09-Nov-23	3:24 pm	09-Nov-23	3:33 pm	<1	<1	24	PASSED
2311-96399-3	WS-006	Sangguniang Barangay ng Lagundi, Lagundi, Plaridel	Deep Well	09-Nov-23	10:33 am	09-Nov-23	3:24 pm	09-Nov-23	3:33 pm	<1	<1	10	PASSED
2311-96400-3	WS-036	Lalangan Barangay Hall, Lalangan, Plaridel	Deep Well	09-Nov-23	9:44 am	09-Nov-23	3:24 pm	09-Nov-23	3:33 pm	<1	<1	22	PASSED

2311-96401-3	WS-002	National Road, Rueda Barangay Hall, Rueda, Plaridel	Deep Well	09-Nov-23	10:54 am	09-Nov-23	3:24 pm	09-Nov-23	3:33 pm	<1	<1	18	PASSED
2311-96402-3	WS-071	Sta. Ines Barangay Hall, Sta. Ines, Plaridel	Deep Well	09-Nov-23	9:10 am	09-Nov-23	3:24 pm	09-Nov-23	3:33 pm	<1	<1	12	PASSED
2311-96403-3	PS-04	Sipat Pump Station	Deep Well	09-Nov-23	11:21 am	09-Nov-23	3:24 pm	09-Nov-23	3:33 pm	<1	<1	10	PASSED
2311-96404-3	PS-09	Plaridel Heights Pump Station	Deep Well	09-Nov-23	9:34 am	09-Nov-23	3:24 pm	09-Nov-23	3:33 pm	<1	<1	14	PASSED
2311-96405-3	PS-10	Sitio Santiago Pump Station	Deep Well	09-Nov-23	9:18 am	09-Nov-23	3:24 pm	09-Nov-23	3:33 pm	<1	<1	10	PASSED
2311-96406-3	PS-02	Tabang Pump Station	Deep Well	09-Nov-23	9:25 am	09-Nov-23	3:24 pm	09-Nov-23	3:33 pm	<1	<1	16	PASSED
2311-96407-3	WS-005	Dampol National High School, Dampol, Plaridel	Deep Well	09-Nov-23	11:12 am	09-Nov-23	3:24 pm	09-Nov-23	3:33 pm	<1	<1	26	PASSED
2311-96408-3	WS-061	Barangay Hall, Lumang Bayan, Plaridel	Deep Well	09-Nov-23	11:47 am	09-Nov-23	3:24 pm	09-Nov-23	3:33 pm	<1	<1	22	PASSED
2311-96409-3	WS-003	Old Rueda PS, Rueda, Plaridel	Deep Well	09-Nov-23	10:41 am	09-Nov-23	3:24 pm	09-Nov-23	3:33 pm	<1	<1	2	PASSED
2311-96410-3	WS-008	Lagundi Elementary School, Lagundi, Plaridel	Deep Well	09-Nov-23	10:02 am	09-Nov-23	3:24 pm	09-Nov-23	3:33 pm	<1	<1	8	PASSED
2312-97126-3	WS-034	Plaridel Municipal Jail (BJMP) Poblacion, Plaridel	Deep Well	07-Dec-23	9:07 am	07-Dec-23	2:58 pm	07-Dec-23	3:06 pm	<1	<1	4	PASSED
2312-97127-3	WS-033	Banga Elementary School, Garcia St., Banga II, Plaridel	Deep Well	07-Dec-23	9:15 am	07-Dec-23	2:58 pm	07-Dec-23	3:06 pm	<1	<1	4	PASSED
2312-97128-3	PS-08	Bulihan Pump Station	Deep Well	07-Dec-23	10:37 am	07-Dec-23	2:58 pm	07-Dec-23	3:06 pm	<1	<1	6	PASSED
2312-97129-3	PS-03	Bintog Pump Station	Deep Well	07-Dec-23	9:58 am	07-Dec-23	2:58 pm	07-Dec-23	3:06 pm	<1	<1	10	PASSED

2312-97130-3	WS-017	Agnaya Barangay Hall, Agnaya, Plaridel	Deep Well	07-Dec-23	12:15 pm	07-Dec-23	2:58 pm	07-Dec-23	3:06 pm	<1	<1	26	PASSED
2312-97131-3	WS-047	Parulan Barangay Hall, Parulan, Plaridel	Deep Well	07-Dec-23	9:35 am	07-Dec-23	2:58 pm	07-Dec-23	3:06 pm	<1	<1	24	PASSED
2312-97132-3	WS-063	Barangay Hall Bintog, Plaridel	Deep Well	07-Dec-23	9:46 am	07-Dec-23	2:58 pm	07-Dec-23	3:06 pm	<1	<1	8	PASSED
2312-97133-3	WS-059	Lumina Covered Court, Lumina Homes Plaridel, Culianin, Plaridel	Deep Well	07-Dec-23	10:12 am	07-Dec-23	2:58 pm	07-Dec-23	3:06 pm	<1	<1	12	PASSED
2312-97134-3	WS-053	San Jose Barangay Hall, San Jose, Plaridel	Deep Well	07-Dec-23	10:24 am	07-Dec-23	2:58 pm	07-Dec-23	3:06 pm	<1	<1	8	PASSED
2312-97135-3	WS-074	Banga I Barangay Hall, Banga I, Plaridel	Deep Well	07-Dec-23	11:45 am	07-Dec-23	2:58 pm	07-Dec-23	3:06 pm	<1	<1	8	PASSED
2312-97136-3	WS-038	Tabang Elementary School, Tabang, Plaridel	Deep Well	07-Dec-23	11:54 am	07-Dec-23	2:58 pm	07-Dec-23	3:06 pm	<1	<1	10	PASSED
2312-97137-3	PS-07	Parulan Pump Station	Deep Well	07-Dec-23	9:27 am	07-Dec-23	2:58 pm	07-Dec-23	3:06 pm	<1	<1	24	PASSED
2312-97138-3	WS-067	St. Agatha Homes 2 Club House, Bulihan, Plaridel	Deep Well	07-Dec-23	10:50 am	07-Dec-23	2:58 pm	07-Dec-23	3:06 pm	<1	<1	6	PASSED
2312-97139-3	WS-065	Barangay Hall Bagong Silang, Plaridel	Deep Well	07-Dec-23	11:18 am	07-Dec-23	2:58 pm	07-Dec-23	3:06 pm	<1	<1	16	PASSED
2312-97140-3	WS-062	Plaridel Water District, Poblacion, Plaridel	Deep Well	07-Dec-23	12:28 pm	07-Dec-23	2:58 pm	07-Dec-23	3:06 pm	<1	<1	2	PASSED
2312-97309-3	WS-060	RHU, Plaridel	Deep Well	14-Dec-23	12:14 pm	14-Dec-23	3:32 pm	14-Dec-23	3:41 pm	<1	<1	10	PASSED
2312-97310-3	WS-010	Sipat Barangay Hall, Sipat, Plaridel	Deep Well	14-Dec-23	11:47 am	14-Dec-23	3:32 pm	14-Dec-23	3:41 pm	<1	<1	16	PASSED



2312-97311-3	WS-022	Sto. Nino Barangay Hall, Sto. Nino, Plaridel	Deep Well	14-Dec-23	10:12 am	14-Dec-23	3:32 pm	14-Dec-23	3:41 pm	<1	<1	10	PASSED
2312-97312-3	WS-006	Sangguniang Barangay ng Lagundi, Lagundi, Plaridel	Deep Well	14-Dec-23	10:48 am	14-Dec-23	3:32 pm	14-Dec-23	3:41 pm	<1	<1	10	PASSED
2312-97313-3	WS-036	Lalangan Barangay Hall, Lalangan, Plaridel	Deep Well	14-Dec-23	9:59 am	14-Dec-23	3:32 pm	14-Dec-23	3:41 pm	<1	<1	8	PASSED
2312-97314-3	WS-002	National Road, Rueda Barangay Hall, Rueda, Plaridel	Deep Well	14-Dec-23	11:13 am	14-Dec-23	3:32 pm	14-Dec-23	3:41 pm	<1	<1	8	PASSED
2312-97315-3	WS-071	Sta. Ines Barangay Hall, Sta. Ines, Plaridel	Deep Well	14-Dec-23	9:10 am	14-Dec-23	3:32 pm	14-Dec-23	3:41 pm	<1	<1	8	PASSED
2312-97316-3	PS-04	Sipat Pump Station	Deep Well	14-Dec-23	11:36 am	14-Dec-23	3:32 pm	14-Dec-23	3:41 pm	<1	<1	10	PASSED
2312-97317-3	PS-09	Plaridel Heights Pump Station	Deep Well	14-Dec-23	9:41 am	14-Dec-23	3:32 pm	14-Dec-23	3:41 pm	<1	<1	2	PASSED
2312-97318-3	PS-10	Sitio Santiago Pump Station	Deep Well	14-Dec-23	9:17 am	14-Dec-23	3:32 pm	14-Dec-23	3:41 pm	<1	<1	2	PASSED
2312-97319-3	PS-02	Tabang Pump Station	Deep Well	14-Dec-23	9:30 am	14-Dec-23	3:32 pm	14-Dec-23	3:41 pm	<1	<1	16	PASSED
2312-97320-3	WS-005	Dampol National High School, Dampol, Plaridel	Deep Well	14-Dec-23	11:24 am	14-Dec-23	3:32 pm	14-Dec-23	3:41 pm	<1	<1	14	PASSED
2312-97321-3	WS-061	Barangay Hall, Lumang Bayan, Plaridel	Deep Well	14-Dec-23	11:55 am	14-Dec-23	3:32 pm	14-Dec-23	3:41 pm	<1	<1	10	PASSED
2312-97322-3	WS-003	Old Rueda PS, Rueda, Plaridel	Deep Well	14-Dec-23	10:58 am	14-Dec-23	3:32 pm	14-Dec-23	3:41 pm	<1	<1	26	PASSED
2312-97323-3	WS-008	Lagundi Elementary School, Lagundi, Plaridel	Deep Well	14-Dec-23	10:35 am	14-Dec-23	3:32 pm	14-Dec-23	3:41 pm	<1	<1	10	PASSED