

PLAWD NEWSLETTER

PLARIDEL WATER DISTRICT

PLAWD
PLARIDEL WATER DISTRICT

PLARIDEL
WATER DISTRICT



PROJECT Update

Page 1

BUDGET SECTION

Melina Marie P. Dela Cruz

Page 2

Budgeting Process

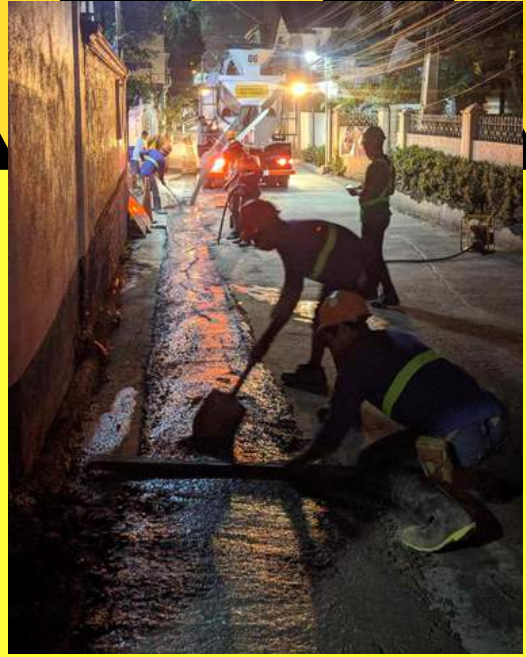
Page 3

Wear It With Pride

Page 4

AMIHAN Season

Page 5



Concrete Restoration at Brgy. Poblacion c/o M.E. Sicat



Testing: Pile Integrity Test and High Strain Dynamic Load Tests, (PDA Test) c/o C.G. Integra at Brgy. Banga 1st Ground Reservoir Project



BUDGET SECTION

Melina Marie P. Dela Cruz

A budget is a spending plan based on income and expenses. It's an estimate of how much money you'll make and spend over a certain period of time. In government agency, it is the key instrument for promoting its socio-economic objectives.

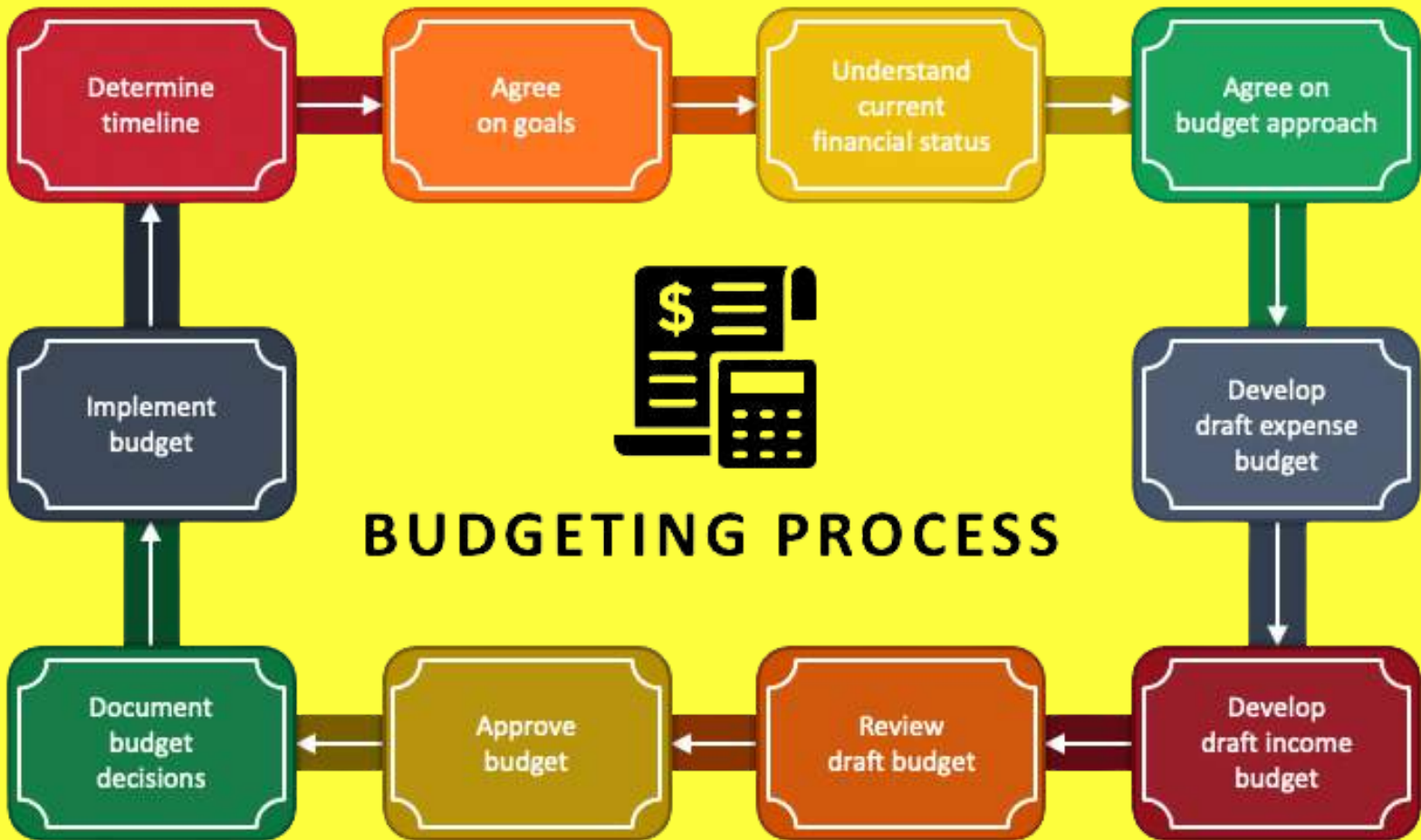
The Budget Section of Plaridel Water District is under the Finance Division, headed by DM Cecilia L. Pasagui and has one staff member, Melina Marie P. Dela Cruz. The function of Budget Section involves planning, allocation, and management of financial resources to achieve the district's goals and objectives. It includes creating a projected revenue & collection and expenditures for the year, setting priorities, and ensuring that funds are allocated efficiently to support various programs and activities of Plaridel Water District. The section is accountable for proper classification and monitoring of the actual expenses incurred versus the allotted budget for the year. We also ensure proper allocation and utilization of the district's financial resources based on the approved Corporate Operating Budget. The budget section supports the program and activities of PLAWD to provide quality service and adequate water supply to our concessionaires.



Budgeting Process



BUDGETING PROCESS



INTRODUCING OUR NEW OFFICE UNIFORM

WEAR IT WITH PRIDE



Monday



Tuesday



Wednesday



Thursday

Amihan Season



Ang Amihan Season o Northeast Monsoon ay ang malamig na hangin na nagmumula sa Siberia.

Q. Bakit malamig ang Hanging Amihan?

- Nagmumula kasi ito sa Siberia kung saan mababa ang temperatura o nag-nyenyebe.

Q. Ano ang posibleng epekto ng Amihan?

- Malamig na panahon at pag-ulan dahil sa maalap na papawirin.

Q. Hanggang saan umaabot ang Hanging Amihan?

- Unang dumadampi ang Hanging Amihan sa Northern Luzon dahil mas malapit ito sa Siberia. Pero umaabot ang Amihan hanggang Visayas.

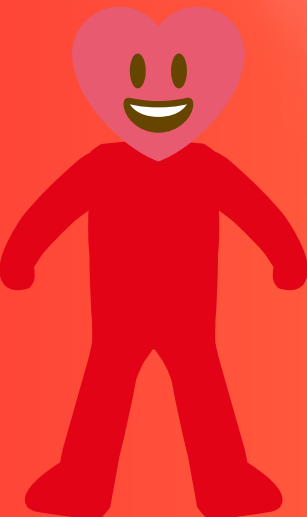
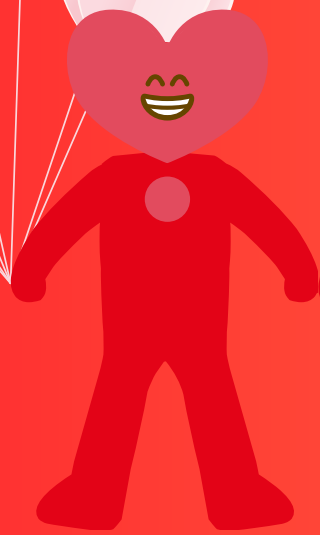
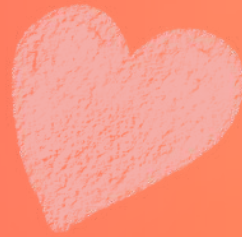
- Sa panahong ding ito, nakakaramdam ng malamig na panahon ang Bulacan.

Q. Kelan ang peak season ng Amihan?

- Enero at Pebrero



PLAWD CREATIVE TEAM



Elias

Bryan

Melina Marie

DM Justin

Engr. Alvin