



PLARIDEL WATER DISTRICT

A.C. Reyes St., Poblacion, Plaridel, Bulacan 3004
Tel. Nos. (044) 795-0102 / 795-1613; Fax No. (044) 760-0229
Email Address: plaridel_water_district1987@yahoo.com
Website: plaridelwaterdistrict.ph



POSTING CERTIFICATION

This is to certify that the Plaridel Water District has posted its Supplemental Annual Procurement Plan # 12 CY 2022 on its agency website and can be accessible through this link: <http://plaridelwaterdistrict.ph/index.php/human-resource/supplemental>

This certification is being issued in compliance with GPPB Circular No. 02-2020, this 30 of June, 2022.

Jim Benzon R. Talavera

Head, Bids and Awards Committee Secretariat

PLARDEL WATER DISTRICT Supplemental Annual Procurement Plan #12 FY 2022

8/16/2022

Code (PAP)	Procurement Project	PMO/ End-User	Is this an Early Procurement Activity? (Yes/No)	Mode of Procurement	Schedule for Each Procurement Activity				Estimated Budget (PNP)			Remarks (brief description of Project)	
					Advertisement / Posting of IB/REI	Submission/ Opening of Bids	Notice of Award	Contract Signing	Source of Funds	Total	MOOE		CO
50213030/857	Emergency Pullout of Parulan PS Pump and Motor Part of Repair and Maintenance - UPTS Pumping Plant	Engineering	NO	NP-53.2 Emergency Cases	Jan-Dec	Jan-Dec	June	June	Corporate Budget	95,200.00		95,200.00	Board Resolution No 48 Series of 2022
TOTAL BUDGET:									Corporate Budget	60,300.00		60,300.00	
									155,500.00				

Prepared By:

Check and Verified By:

Review and Recommended By:

Approved By:


Prepared By:

 Jim Benzon R. Talavera
 BAC Head Secretariat

Check and Verified By:
ABSENT
 Marifaye H. Esando
 BAC Chairperson

Review and Recommended By:

 Alberto A. Mendoza
 BAC Member

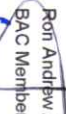
Approved By:

 Nathanael Andres S. Bernabe Jr.
 Head of Procuring Entity


 Charlie A. Felicias
 BAC Vice Chairperson

Daniel Gravador
 BAC Member


 Judy Ann D R Manuel
 Corporate Budget Officer C


 Marie G. Macatangay
 Interim General Manager


 Ron Andrew A. Rivero
 BAC Member


 Justin Michael B. Berang
 BAC Member



**PROJECT PROCUREMENT MANAGEMENT PLAN (PPMP)
Supplemental Project Procurement Management Plan 2022**

END-USER/UNIT : **Engineering Division**

June 15, 2022

**Charged to Corporate Funds
Projects, Programs and Activities (PAPs)**

Code	GENERAL DESCRIPTION	QUANTITY/ SIZE	ESTIMATED BUDGET	Mode of Procurement	SCHEDULE/MILESTONE OF ACTIVITIES														
					Jan	Feb	Mar	Apr	May	Jun	July	Aug	Sept	Oct	Nov	Dec			
50213030/857	Emergency Pullout of Parulan PS Pump and Motor Part of Repair and Maintenance - UPPS Pumping Plant	1 lot	95,200.00	Emergency Cases						95,200.00									
Total Budget				155,500.00	SVP	when the need arises													

TOTAL ESTIMATED BUDGET: 155,500.00

NOTE: 1. Technical Specifications for each Item/Project being proposed shall be submitted as part of the PPMP

Prepared :

Daniel C. Gravador
EDr. Daniel C. Gravador
Senior Engineer A

Recommending Approval :

Reynante DC. Francisco
EDr. Reynante DC. Francisco
Manager - Engineering Division



PLARIDEL WATER DISTRICT

A.C. Reyes St., Poblacion, Plaridel, Bulacan 3004
Tel. Nos. (044) 795-0102 / 795-1013; Fax No. (044) 760-0229
Email Address: plaridel_water_district1987@yahoo.com
Website: plaridelwaterdistrict.ph



RESOLUTION NO. 48 Series of 2022

RESOLUTION APPROVING THE EMERGENCY PROCUREMENT OF THE SERVICES BY A SERVICE PROVIDER FOR THE PULL-OUT AND REPAIR OF THE PARULAN PUMPING STATION'S SUBMERSIBLE PUMP AND MOTOR AMOUNTING TO NINETY-FIVE THOUSAND TWO HUNDRED PESOS (PHP95,200.00) TO BE CHARGED AGAINST THE BUDGET FOR THE REPAIR AND MAINTENANCE - UPIS PUMPING PLANT

WHEREAS, it had been observed for the past months that there was a continuous decline in the production flow rate and discharge of the Parulan Pumping Station;

WHEREAS, upon analyzing the production records, there was a 22.3% drop in the flow rate and a 31.7% drop in pressure being supplied to the distribution network from January to June 2022;

WHEREAS, this resulted in the increase in the number of complaints concerning low pressure or no water in Barangays Banga 1st, Banga 2nd, Parulan, Poblacion, and Bagong Silang in the past two months;

WHEREAS, upon the pull-out of the submersible pump, it was found out that the BI coupling attached to the pump was severely damaged showing multiple holes on different sides, moreover, the inlet screen was clogged with a mud-like substance which prevented the water from flowing properly through the pump;

WHEREAS, the foregoing circumstances resulted in the decrease in flow rate and pressure of the aforesaid pumping station and distribution network;

WHEREAS, the Plaridel Water District's Management recommended to approve the emergency procurement of the services by a service provider for the pull-out and repair of the aforesaid pumping station's submersible pump and motor amounting to Php95,200.00 to be charged against the budget for the Repair and Maintenance - UPIS Pumping Plant;

NOW, THEREFORE, BE IT RESOLVED, as it is **HEREBY RESOLVED**, do hereby approve the emergency procurement of the services by a service provider for the pull-out and repair of the Parulan Pumping Station's submersible pump and motor amounting to Ninety-Five Thousand Two Hundred Pesos (Php95,200.00) to be charged against the budget for the Repair and Maintenance - UPIS Pumping Plant.

[Handwritten signatures in blue ink]

[Handwritten signature in blue ink]

APPROVED this 24th day of June 2022.



NATHANAEL ANDRES S. BERNABE, JR.
Chairperson



ENGR. RAINIER P. PATAWI
Vice-Chairperson



ATTY. REYNALDO F. PARIS
Secretary



NANCY C. DELA CRUZ
Director



AMIRA DE LEON ARROYO
Director



FROM THE ENGINEERING AND TECHNICAL DIVISION		FOR CONSIDERATION OF THE GENERAL MANAGER	
SUBJECT		DATE	
Emergency Procurement of Service Provider for the Pull-out and Repair of Parulan PS Submersible Pump and Motor		June 15, 2022	

BACKGROUND

It has been observed for the past few months that there is a continuous decline in the production flow rate and discharge pressure the of Parulan Pump Station. Concurrently, the flow rate and pressure of Parulan PS at 4:18 AM of January 11, 2022 is 19.77 L/s with a pressure of 60 psi. In comparison, the flow rate and pressure of Parulan PS at 4:19 AM on June 08, 2022 is 15.37 L/s with a pressure of 41 psi. This is a 22.3% drop in flow rate and a 31.7% drop in pressure being supplied to the distribution network, as shown in the attached Figure 1 and 2. As a result, there is an increase in the number of low-pressure or no water complaints in Brgy. Banga 1st, Banga 2nd, Parulan, Poblacion, and Bagong Silang in the past 2 months. Time is of the essence and such complaints need to be dealt with.

Upon pull-out of the submersible pump, it was found that the BI coupling attached to the pump is severely damaged showing multiple holes on different sides. Moreover, the inlet screen is clogged with a mud-like substance that prevented water from properly flowing through the pump. This ultimately resulted in a decrease in flow and pressure in the pump station and distribution network.

JUSTIFICATIONS

1. It was observed that there is a slow continuous decline in flow rate and pressure;
2. It was found that the coupling of the submersible pump had several holes throughout its circumference;
3. The inlet screen of the submersible pump was also heavily clogged with a mud-like substance that prevented water from properly flowing through the pump;
4. The mentioned issues resulted in frequent complaints of low to no water pressure in nearby affected barangays.

RECOMMENDATIONS

Approval of the emergency procurement of service provider for the pull-out and repair of the Parulan PS submersible pump and motor amounting to ₱95,200.00, is hereby recommended to be charged to Repair and Maintenance – UPIS Pumping Plant.

REQUESTED BY:  ENGR. REYNANTE D. FRANCISCO Manager, Engineering and Technical Division	RECOMMENDING APPROVAL:  ENGR. MARIO G. MACATANGAY Interim General Manager	BOARDS' ACTION	Approved
		RESOLUTION NO.	48, s. 2022
		DATE CONSIDERED	24 June 2022
		DATE RELEASED	24 June 2022

ANNEX

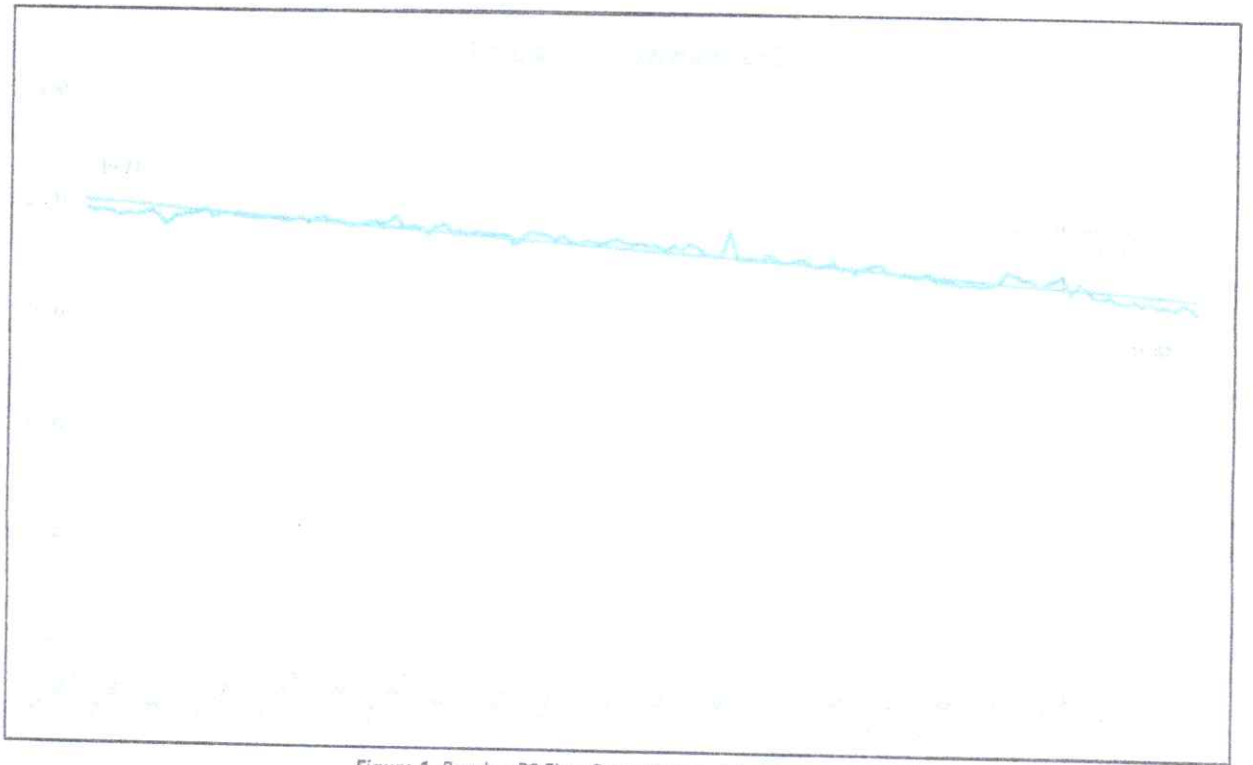


Figure 1. Parulan PS Flow Rate at around 4AM

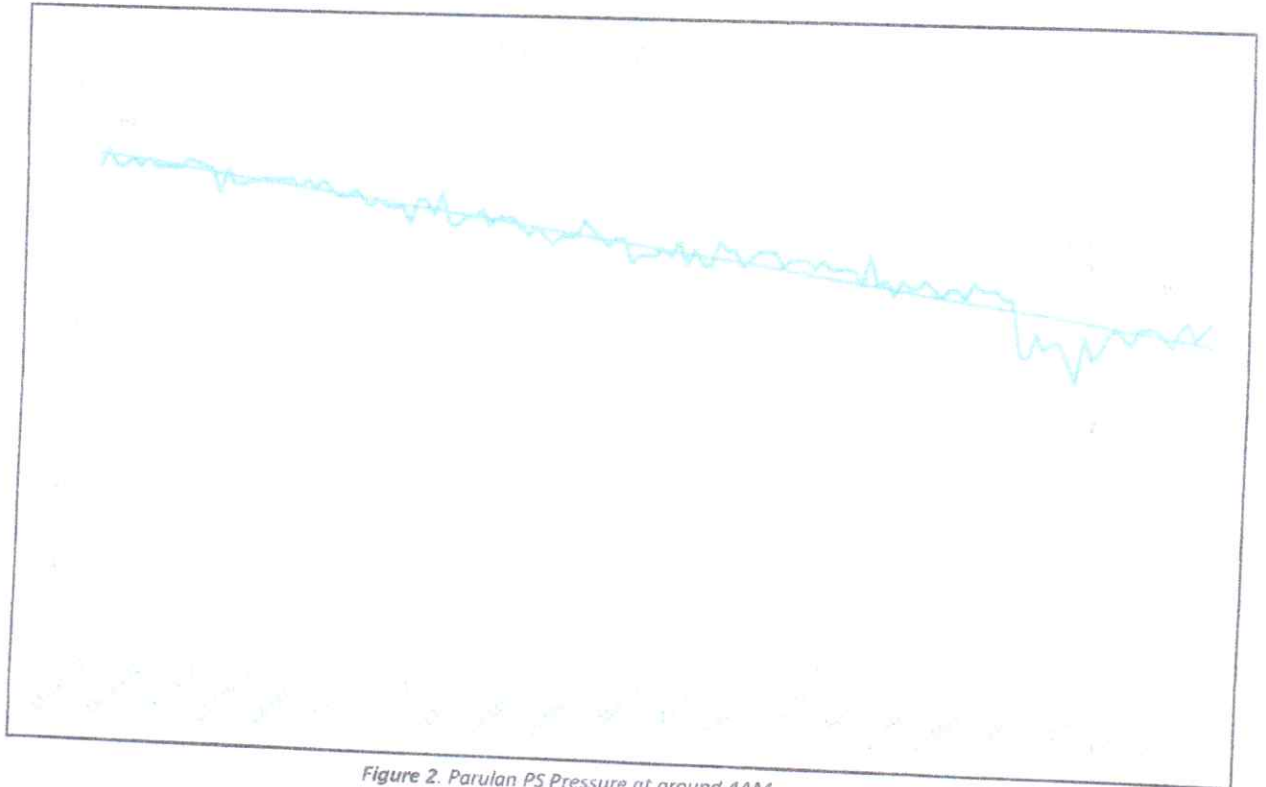
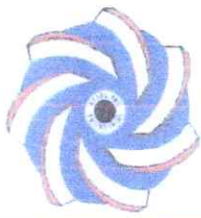


Figure 2. Parulan PS Pressure at around 4AM



HYDRO-PRO ENGINEERING

Lot 2-A-5 Konsehal Diez St. Malhacan, Meycauayan City, 3020 Bulacan
Tel / Fax No.: (044) 323-3964 * Mobile No. (0926) 646-7221
E-mail: hydropro.info@gmail.com

PUMP SUPPLIER * SERVICE * REPAIR * PARTS * INSTALLATION * FABRICATION

PLARIDEL WATER DISTRICT

A.C. Reyes St., Poblacion, Plaridel, Bulacan

10-Jun-2022

QUOT. NO. HPE2022-2993-R1

Attention: **MR. JIM BENZON TALAVERA**
BAC Head Secretariat

Subject: For Parulan PS (Preventive Maintenance)

Gentlemen:

In line with your request for quotation, we are pleased to offer and submit for consideration the following:

ITEM NO.	DESCRIPTION	QTY / UNIT	UNIT COST	AMOUNT
1	Labor, tools, & equipment for emergency pull-out and re-installation of submersible pumpset Scope of work: * Mobilization / demobilization of tools, equipment & service crew * Set up of equipment * Pull out of existing submersible pumpset & pvc riser pipes at 4"Ø x 180' setting * Installation of spare submersible pumpset & pvc riser pipes at 4"Ø x 180' setting * Testing	1 lot	40,000.00	40,000.00
2	Labor, and materials for splicing works	1 lot	5,000.00	5,000.00
3	Reconditioning of 30HP "Pflueger" Submersible Motor Scope of work: * Cleaning of motor * Refill of lubricant * Testing of motor	1 lot	12,000.00	12,000.00
4	Supply of 5"Ø x 4"Ø Stainless reducer pump nipple with 4"Ø stainless steel coupling	1 pc	38,200.00	38,200.00
TOTAL AMOUNT (PHP)				95,200.00

WARRANTY: *Three (3) months against deficiencies in parts and faulty workmanship.*
 COMPLETION: *Within three (3) working days upon notice to proceed.*
 TERMS: *Full payment upon completion of work.*
 PRICE VALIDITY: *Any order placed on the basis of this quotation is subject to our acceptance and approval at the time it is placed.*

Thank you very much for giving us the opportunity to quote on your requirements. Should you find our proposal acceptable, please signify your conformity below.

For your further questions and inquiry, please do not hesitate to call us at (044) 323-3964 and (0926) 646-7221 or you can e-mail us at hydropro.info@gmail.com.

Very truly yours,

MITCH PALAÑA - ASUNCION
Operations Manager
Cell. No. (0917) 803-0649

CONFORME:

Name: _____
Signature: _____
Date: _____



PLARIDEL WATER DISTRICT

REPAIR & MAINTENANCE REPORT

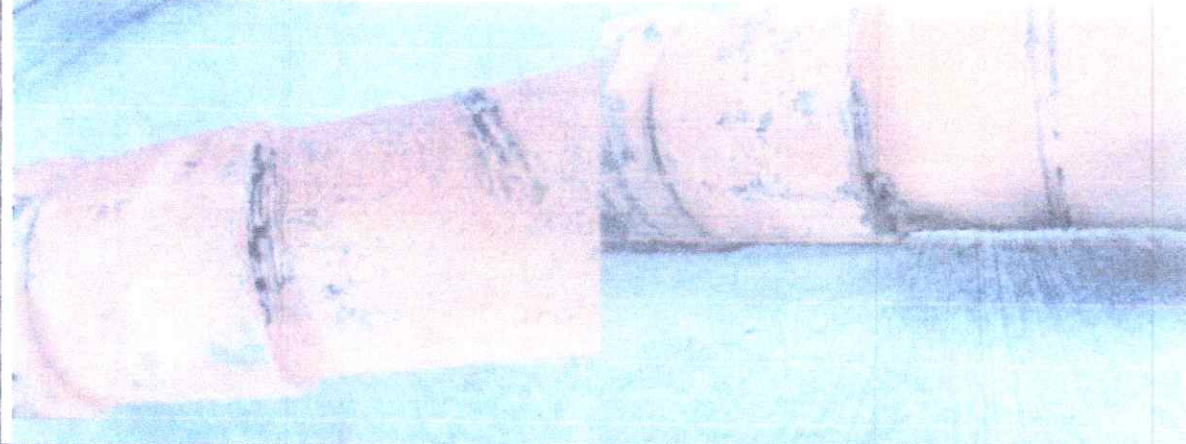
Date of Repair/ Maintenance	06-15-2022	Reference No.	2022-MR-ENGPRO-01
Location/s	Parulan Pump Station	Date Prepared	06-15-2022
Prepared by	 Engr. Daniel C. Gravador	Noted by	 Engr. Reynante D. Francisco
Subject			
Pull-out and replacement of submersible pump and motor			
Activities Conducted (List materials used, labor utilized, equipment replaced, etc.)			
Submersible Motor			
Removed	Installed		
<ul style="list-style-type: none"> Brand: Franklin Electric Serial No.: 15F19-04-06117A Model: 2366068120 30hp, 60 Hz, 230V, 3450 RPM, 3-phase 	<ul style="list-style-type: none"> Brand: Franklin Electric Serial No.: 21E19-20-00365A Model: 2366068020 30hp, 60Hz, 230V, 3450 RPM, 3-phase 		
Submersible Pump			
Removed	Installed		
<ul style="list-style-type: none"> Brand: n/a Serial No.: n/a Model: Series 400-6 HP Requirement: 30 Stages: 6 4" \varnothing BI coupling 	<ul style="list-style-type: none"> Brand: Shakti Serial No.: 2137346601 Model: QF125-3A HP Requirement: 20 Flow (Q): 385 US GPM Head (H): 155 FT Stages: 3 5" \varnothing x 4" \varnothing stainless steel reducer pump nipple with 4" \varnothing stainless steel coupling 		
Other Accessories:			
<ul style="list-style-type: none"> 4" (113MM Outside Diameter) Standard uPVC Column Pipes for Submersible Pumps Top and bottom adapter (for column pipe) 			
Labor:			
<ul style="list-style-type: none"> Contracted Hydro-Pro Engineering for labor, materials and splicing works 			
Findings			
Decrease in pressure and flow rate due to the following:			
<ul style="list-style-type: none"> Clogged Inlet screen (see Site Photos) Damaged BI Nipple Adapter (see Site Photos) 			
Performance Monitoring:			
Before	After	Difference:	
<ul style="list-style-type: none"> Flow Rate (Q): 15.07 L/s Pressure (psi): 40 psi Frequency (Hz): 60 hz Time of measurement: 4:09 AM (June 14, 2022) 	<ul style="list-style-type: none"> Flow Rate (Q): 21.51 L/s Pressure (psi): 50 psi Frequency (Hz): 60 hz Time of measurement: 4:14 AM (June 16, 2022) 	<ul style="list-style-type: none"> Q: +44.16% Pressure: +21.95% 	
<ul style="list-style-type: none"> Flow Rate (Q): 18.43 L/s Pressure (psi): 18 psi Frequency (Hz): 60 hz Time of measurement: 8:38 AM (June 9, 2022) 	<ul style="list-style-type: none"> Flow Rate (Q): 26.16 L/s Pressure (psi): 31 psi Frequency (Hz): 60 hz Time of measurement: 8:42 AM (June 18, 2022) 	<ul style="list-style-type: none"> Q: 41.94% Pressure: +72.22% 	

Site Photos (if applicable)

Clogged Inlet Screen:



Damaged BI Nipple Adapter/Coupling:





Old Pump and Motor.



New Pump and Motor.

